

LEA Name : Central Bucks SD  
Address : 20 Weiden Dr  
Doylestown , PA 18901

County : Bucks  
AUN Number : 122092102  
LEA Type : SD

## Annual Financial Report Accuracy Certification Statement

For Fiscal Year Ending

**6/30/2020**

Pennsylvania Department of Education

&

Office of Comptroller Operations

PDE-2056: Intermediate Unit  
PDE-2057: School District, AVTS/CTC, Charter School,  
and Special Program Jointure

**CERTIFICATION:** By signing this page I agree that the electronic data submitted is a complete and accurate statement of the financial operations and status of the local education agency for the fiscal year. It has been prepared in accordance with generally accepted accounting principles and established Commonwealth of PA reporting guidelines.

  
\_\_\_\_\_  
Chief School Administrator Signature

Date

11/30/2020

  
\_\_\_\_\_  
Board Secretary Signature

Date

11/30/2020

Barbara Markowitz

\_\_\_\_\_  
Contact Person

bmarkowitz@cbsd.org

\_\_\_\_\_  
Contact Person E-mail Address

(268)893-2077

Ext :

\_\_\_\_\_  
Contact Person Telephone Number

(267)893-5800

\_\_\_\_\_  
Contact Person Fax Number

**Audit Certification**  
**Annual Financial Report:**  
For Fiscal Year Ending **6/30/2020**  
**(Pursuant to PA School Code Section 218(b))**

LEA Name : Central Bucks SD  
AUN Number : 122092102  
County : Bucks

<b>Audit Certification Due:</b> 12/31/2020
---

**This certification is applicable to the Annual Financial Report data submitted through the Consolidated Financial Reporting System (CFRS).**

CERTIFICATION: By signing this page I agree that the financial statements of the school have been properly audited as noted above pursuant to Article XXIV, and in the auditor's professional opinion, the Annual Financial Report (PDE-2057) submitted through CFRS is materially consistent with the audited financial statements.

**Chief School Administrator**

**Board Secretary**

\_\_\_\_\_  
Signature

\_\_\_\_\_  
Date

\_\_\_\_\_  
Signature

\_\_\_\_\_  
Date

Barbara Markowitz

\_\_\_\_\_  
Contact Person

bmarkowitz@cbsd.org

\_\_\_\_\_  
Contact Person E-mail Address

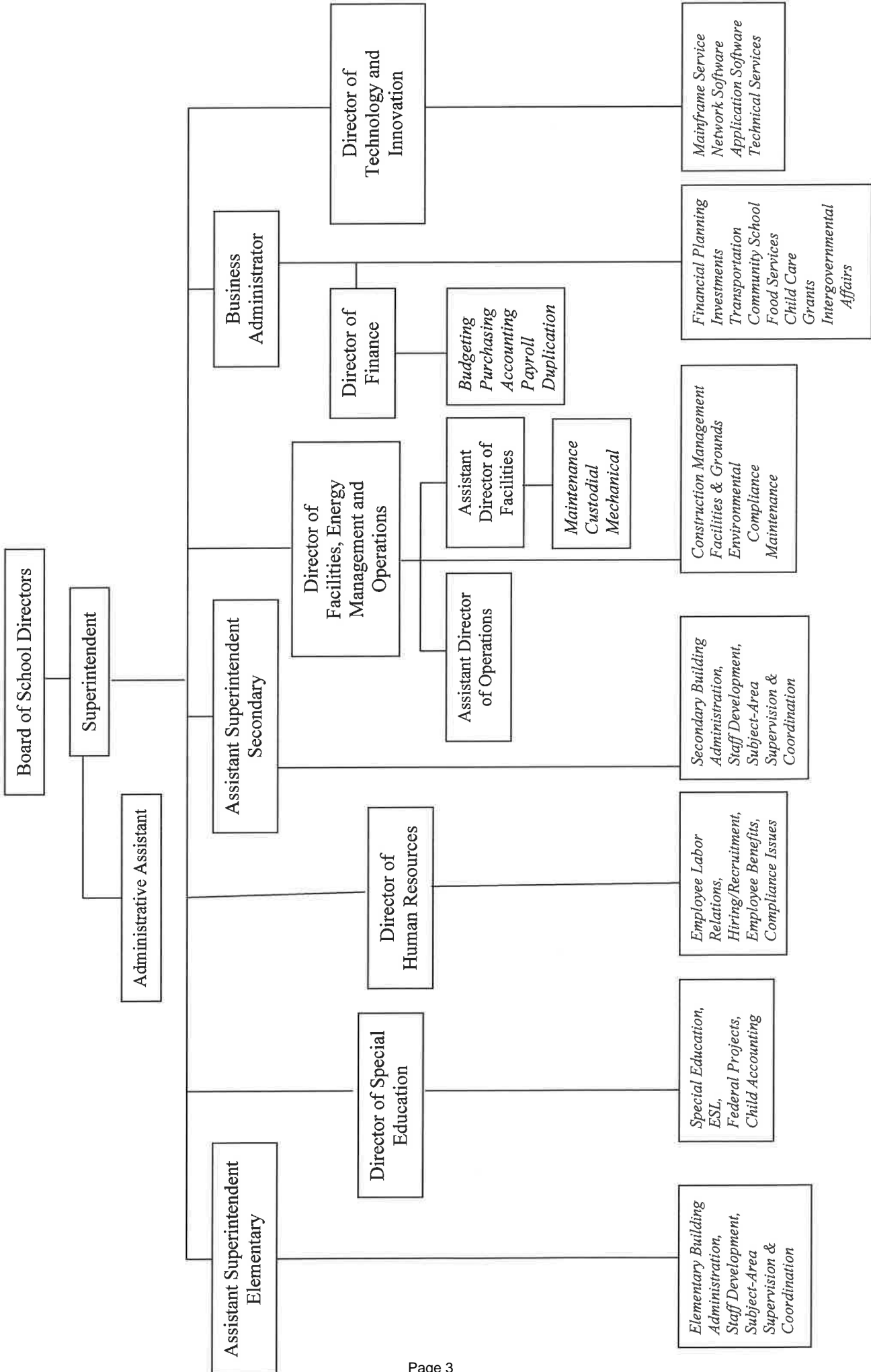
(268)893-2077      Ext :

\_\_\_\_\_  
Contact Person Telephone Number

(267)893-5800

\_\_\_\_\_  
Contact Person Fax Number

# Central Bucks School District Organization Chart



## **G. Short-Term Interfund Receivables/Payables**

During the course of operations, transactions may occur between individual funds for goods provided or services rendered. These receivables and payables are classified as "due from other funds" or "due to other funds" on the governmental funds balance sheet. Short-term interfund loans are classified as "interfund receivables/payables." These amounts are eliminated in the statement of net position, except for amounts due between governmental and business-type activities which, when present, are shown as internal balances.

## **H. Inventories**

Inventory of purchased food and paper supplies within the Proprietary Fund is carried at cost using the first-in, first-out method of accounting and is subsequently charged to expense when consumed. Inventory of donated foods is valued at fair market value as established by the U.S. Department of Agriculture.

## **I. Capital Assets and Depreciation**

Capital assets, which include property, plant, equipment, and construction in progress, are reported in the applicable governmental or business-type activities columns in the government-wide financial statements. The School District defines a capital asset as an asset with an initial individual cost equal to or greater than \$5,000 or purchased with debt proceeds and must also have an estimated useful life in excess of one year. Capital assets are recorded at historical cost or estimated historical cost if purchased or constructed. Donated capital assets are recorded at estimated fair market value at the date of donation.

The costs of normal maintenance and repairs that do not add to the value of the asset or materially extend asset lives are not capitalized.

Property, plant and equipment of the School District are depreciated using the straight-line method over the following estimated useful lives:

	<u>Years</u>
Land improvements, buildings and building improvements	15-40
Furniture, fixtures and equipment	5-20
Vehicles	8

## **J. Unearned Revenue**

Unearned revenue arises when assets are recognized before the revenue recognition criteria have been satisfied. Unearned revenue arises when resources are received by the School District before it has a legal claim to them, as when grant monies are received prior to the incurrence of qualifying expenditures. In subsequent periods, when revenue recognition criteria are met or when the School District has a legal claim to the resources, the liability for unearned revenue is removed from the governmental funds balance sheet and revenue is recognized.

<u>Val Number</u>	<u>Description</u>	<u>Justification</u>
42420	<p>Expenditure Detail: Total current year 2700-513 expenditure varies from prior year by 10%. Correct the data or enter a justification.</p> <p>2700-513, AFR Exp Detail: \$5,798,996.42 2700-513, PY AFR Amount: \$8,081,576.18</p>	<p>This is due to COVID-19. School was not in session from March 13 to the end of the school year, so we did not pay our contracted carrier.</p>

LEA : 122092102      Central Bucks SD

Printed 12/1/2020 8:53:51 AM

Amounts Expressed in Whole Dollars		<u>General Fund</u> <u>(10)</u>	<u>Student Sponsored</u> <u>Activity Fund</u> <u>(21)</u>	<u>Public Purpose Trust</u> <u>(27)</u>	<u>Other Compt Approved</u> <u>(28)</u>	<u>Athletic / Activity</u> <u>(29)</u>
<b>Assets And Deferred Outflows Of Resources</b>						
<b>Assets</b>						
0100	Cash and Cash Equivalents	44,513,020				
0110	Investments	2,677,000				
0120	Taxes Receivable	8,915,943				
0130	Due From Other Funds	42,279				
0141	Due From Other Governments					
0142	State Revenue Receivable	12,968,185				
0143	Federal Revenue Receivable	3,800,457				
0145	Other Intergovernmental Revenue Receivable					
0146	Due from Primary Government					
0147	Due from Component Unit					
0150	Other Receivables	548,616				
0170	Inventories	60,281				
0180	Prepaid Expenses (Expenditures)	119,173				
0190	Other Current Assets					
<b>Total Assets</b>		<b>\$73,644,954</b>				
0910	Deferred Outflows of Resources					
<b>Total Assets And Deferred Outflows Of Resources</b>		<b>\$73,644,954</b>				

LEA : 122092102      Central Bucks SD

Printed 12/1/2020 8:53:51 AM

Amounts Expressed in Whole Dollars		<u>Capital Reserve (690.</u> <u>1850)</u> <u>(31)</u>	<u>Capital Reserve (1431)</u> <u>(32)</u>	<u>Other Capital Projects</u> <u>Fund</u> <u>(39)</u>	<u>Debt Service</u> <u>(40)</u>	<u>Permanent</u> <u>(90)</u>
<b>Assets And Deferred Outflows Of Resources</b>						
<b>Assets</b>						
0100	Cash and Cash Equivalents			475,603		
0110	Investments			52,200,249		
0120	Taxes Receivable					
0130	Due From Other Funds					
0141	Due From Other Governments					
0142	State Revenue Receivable					
0143	Federal Revenue Receivable					
0145	Other Intergovernmental Revenue Receivable					
0146	Due from Primary Government					
0147	Due from Component Unit					
0150	Other Receivables					
0170	Inventories					
0180	Prepaid Expenses (Expenditures)					
0190	Other Current Assets					
<b>Total Assets</b>				<b>\$52,675,852</b>		
0910	Deferred Outflows of Resources					
<b>Total Assets And Deferred Outflows Of Resources</b>				<b>\$52,675,852</b>		

LEA : 122092102      Central Bucks SD

Printed 12/1/2020 8:53:51 AM

Amounts Expressed in Whole Dollars		<u>Total Governmental</u>
		<u>Funds</u>
<b>Assets And Deferred Outflows Of Resources</b>		
<b>Assets</b>		
0100 Cash and Cash Equivalents	44,988,623	
0110 Investments	54,877,249	
0120 Taxes Receivable	8,915,943	
0130 Due From Other Funds	42,279	
0141 Due From Other Governments		
0142 State Revenue Receivable	12,968,185	
0143 Federal Revenue Receivable	3,800,457	
0145 Other Intergovernmental Revenue Receivable		
0146 Due from Primary Government		
0147 Due from Component Unit		
0150 Other Receivables	548,616	
0170 Inventories	60,281	
0180 Prepaid Expenses (Expenditures)	119,173	
0190 Other Current Assets		
<b>Total Assets</b>	<b>\$126,320,806</b>	
0910 Deferred Outflows of Resources		
<b>Total Assets And Deferred Outflows Of Resources</b>	<b>\$126,320,806</b>	



LEA : 122092102      Central Bucks SD

Printed 12/1/2020 8:53:51 AM

Amounts Expressed in Whole Dollars	<u>General Fund</u> <u>(10)</u>	<u>Student Sponsored</u> <u>Activity Fund</u> <u>(21)</u>	<u>Public Purpose Trust</u> <u>(27)</u>	<u>Other Compt Approved</u> <u>(28)</u>	<u>Athletic / Activity</u> <u>(29)</u>
<b>Liabilities And Deferred Inflows Of Resources And Fund Balances</b>					
<b>Liabilities</b>					
0400 Due to Other Funds					
0411 Due to Other Governments					
0412 Due to Primary Government					
0413 Due to Component Unit					
0420 Accounts Payable	2,735,875				
0430 Contracts Payable					
0440 Current Portion of Long-Term Debt					
0450 Short-Term Payables					
0461 Accrued Salaries and Benefits	1,158,856				
0462 Payroll Deductions and Withholding	34,644,430				
0480 Unearned Revenues	130,697				
0490 Other Current Liabilities					
<b>Total Liabilities</b>	<b>\$38,669,858</b>				
0950 Deferred Inflows of Resources	1,785,924				
<b>Fund Balances</b>					
0810 Nonspendable Fund Balance					
0820 Restricted Fund Balance					
0830 Committed Fund Balance					
0840 Assigned Fund Balance	10,795,262				
0850 Unassigned Fund Balance	22,393,910				
<b>Total Fund Balances</b>	<b>\$33,189,172</b>				
<b>Total Liabilities, Deferred Inflows Of Resources And Fund Balances</b>	<b>\$73,644,954</b>				

LEA : 122092102      Central Bucks SD

Printed 12/1/2020 8:53:51 AM

Amounts Expressed in Whole Dollars		<u>Capital Reserve (690.</u> <u>1850)</u> <u>(31)</u>	<u>Capital Reserve (1431)</u> <u>(32)</u>	<u>Other Capital Projects</u> <u>Fund</u> <u>(39)</u>	<u>Debt Service</u> <u>(40)</u>	<u>Permanent</u> <u>(90)</u>
<b>Liabilities And Deferred Inflows Of Resources And Fund Balances</b>						
<b>Liabilities</b>						
0400	Due to Other Funds			27,207		
0411	Due to Other Governments					
0412	Due to Primary Government					
0413	Due to Component Unit					
0420	Accounts Payable			6,094,752		
0430	Contracts Payable					
0440	Current Portion of Long-Term Debt					
0450	Short-Term Payables					
0461	Accrued Salaries and Benefits					
0462	Payroll Deductions and Withholding					
0480	Unearned Revenues					
0490	Other Current Liabilities					
<b>Total Liabilities</b>				<b>\$6,121,959</b>		
0950	Deferred Inflows of Resources					
<b>Fund Balances</b>						
0810	Nonspendable Fund Balance					
0820	Restricted Fund Balance					
0830	Committed Fund Balance			46,553,893		
0840	Assigned Fund Balance					
0850	Unassigned Fund Balance					
<b>Total Fund Balances</b>				<b>\$46,553,893</b>		
<b>Total Liabilities, Deferred Inflows Of Resources And Fund Balances</b>				<b>\$52,675,852</b>		

LEA : 122092102      Central Bucks SD

Printed 12/1/2020 8:53:51 AM

Amounts Expressed in Whole Dollars		<u>Total Governmental Funds</u>
<b>Liabilities And Deferred Inflows Of Resources And Fund Balances</b>		
<b>Liabilities</b>		
0400 Due to Other Funds		27,207
0411 Due to Other Governments		
0412 Due to Primary Government		
0413 Due to Component Unit		
0420 Accounts Payable		8,830,627
0430 Contracts Payable		
0440 Current Portion of Long-Term Debt		
0450 Short-Term Payables		
0461 Accrued Salaries and Benefits		1,158,856
0462 Payroll Deductions and Withholding		34,644,430
0480 Unearned Revenues		130,697
0490 Other Current Liabilities		
<b>Total Liabilities</b>		<b>\$44,791,817</b>
0950 Deferred Inflows of Resources		1,785,924
<b>Fund Balances</b>		
0810 Nonspendable Fund Balance		
0820 Restricted Fund Balance		
0830 Committed Fund Balance		46,553,893
0840 Assigned Fund Balance		10,795,262
0850 Unassigned Fund Balance		22,393,910
<b>Total Fund Balances</b>		<b>\$79,743,065</b>
<b>Total Liabilities, Deferred Inflows Of Resources And Fund Balances</b>		<b>\$126,320,806</b>

LEA : 122092102      Central Bucks SD

Printed 12/1/2020 8:53:57 AM

Amounts Expressed in Whole Dollars	General Fund (10)	Student Sponsored Activity Fund (21)	Public Purpose Trust (27)	Other Compt Approved (28)	Athletic / Activity (29)
<b>Revenues</b>					
6000 Revenue from Local Sources	263,299,143				
7000 Revenue from State Sources	74,237,654				
8000 Revenue from Federal Sources	3,838,491				
<b>Total Revenues</b>	<b>\$341,375,288</b>				
<b>Expenditures</b>					
1000 Instruction	204,222,177				
2000 Support Services	97,135,621				
3000 Operation of Non-Instructional Services	8,935,596				
4000 Facilities Acquisition, Construction and Improvement Services					
5110 Debt Service	9,283,365				
5130 Refund of Prior Year Revenues / Receipts	32,876				
<b>Total Expenditures</b>	<b>\$319,609,635</b>				
<b>Excess (Deficiency) Of Revenues Over Expenditures</b>	<b>\$21,765,653</b>				
<b>Other Financing Sources (Uses)</b>					
9110 Face Value of Bonds Issued					
9120 Proceeds from Refunding of Bonds					
9130 Bond Premiums					
9200 Proceeds from Extended-Term Financing					
9300 Interfund Transfers - IN					
9400 Sale of or Compensation for Loss of Fixed Assets	10,494				
9710 Transfers from Component Units					
9720 Transfers from Primary Governments					
9910 Other Financing Sources Not Listed in the 9000 Series					
9990 Insurance Recoveries					
5120 Debt Service – Refunded Bonds					
5150 Bond Discounts					
5200 Interfund Transfers – Out	15,300,000				
5300 Transfers Out to Component Units/Primary Governments					
<b>Total Other Financing Sources (Uses)</b>	<b>(\$15,289,506)</b>				

LEA : 122092102      Central Bucks SD

Printed 12/1/2020 8:53:57 AM

Amounts Expressed in Whole Dollars	<u>Capital Reserve (690.1850)</u> <u>(31)</u>	<u>Capital Reserve (1431)</u> <u>(32)</u>	<u>Other Capital Projects</u> <u>Fund</u> <u>(39)</u>	<u>Debt Service</u> <u>(40)</u>	<u>Permanent</u> <u>(90)</u>
<b>Revenues</b>					
6000 Revenue from Local Sources			1,507,699	48,480	
7000 Revenue from State Sources					
8000 Revenue from Federal Sources					
<b>Total Revenues</b>			<b>\$1,507,699</b>	<b>\$48,480</b>	
<b>Expenditures</b>					
1000 Instruction			97,440		
2000 Support Services			4,604,095	66,771	
3000 Operation of Non-Instructional Services					
4000 Facilities Acquisition, Construction and Improvement Services			19,067,648		
5110 Debt Service				29,902,481	
5130 Refund of Prior Year Revenues / Receipts					
<b>Total Expenditures</b>			<b>\$23,769,183</b>	<b>\$29,969,252</b>	
<b>Excess (Deficiency) Of Revenues Over Expenditures</b>			<b>(\$22,261,484)</b>	<b>(\$29,920,772)</b>	
<b>Other Financing Sources (Uses)</b>					
9110 Face Value of Bonds Issued					
9120 Proceeds from Refunding of Bonds					
9130 Bond Premiums					
9200 Proceeds from Extended-Term Financing					
9300 Interfund Transfers - IN			15,550,181		
9400 Sale of or Compensation for Loss of Fixed Assets					
9710 Transfers from Component Units					
9720 Transfers from Primary Governments					
9910 Other Financing Sources Not Listed in the 9000 Series					
9990 Insurance Recoveries					
5120 Debt Service – Refunded Bonds					
5150 Bond Discounts					
5200 Interfund Transfers – Out				250,181	
5300 Transfers Out to Component Units/Primary Governments					
<b>Total Other Financing Sources (Uses)</b>			<b>\$15,550,181</b>	<b>(\$250,181)</b>	

Amounts Expressed in Whole Dollars		<u>Total Governmental Funds</u>
<b>Revenues</b>		
6000	Revenue from Local Sources	264,855,322
7000	Revenue from State Sources	74,237,654
8000	Revenue from Federal Sources	3,838,491
<b>Total Revenues</b>		<b>\$342,931,467</b>
<b>Expenditures</b>		
1000	Instruction	204,319,617
2000	Support Services	101,806,487
3000	Operation of Non-Instructional Services	8,935,596
4000	Facilities Acquisition, Construction and Improvement Services	19,067,648
5110	Debt Service	39,185,846
5130	Refund of Prior Year Revenues / Receipts	32,876
<b>Total Expenditures</b>		<b>\$373,348,070</b>
<b>Excess (Deficiency) Of Revenues Over Expenditures</b>		<b>(\$30,416,603)</b>
<b>Other Financing Sources (Uses)</b>		
9110	Face Value of Bonds Issued	
9120	Proceeds from Refunding of Bonds	
9130	Bond Premiums	
9200	Proceeds from Extended-Term Financing	
9300	Interfund Transfers - IN	15,550,181
9400	Sale of or Compensation for Loss of Fixed Assets	10,494
9710	Transfers from Component Units	
9720	Transfers from Primary Governments	
9910	Other Financing Sources Not Listed in the 9000 Series	
9990	Insurance Recoveries	
5120	Debt Service – Refunded Bonds	
5150	Bond Discounts	
5200	Interfund Transfers – Out	15,550,181
5300	Transfers Out to Component Units/Primary Governments	
<b>Total Other Financing Sources (Uses)</b>		<b>\$10,494</b>

Amounts Expressed in Whole Dollars		<u>General Fund</u> <u>(10)</u>	<u>Student Sponsored</u> <u>Activity Fund</u> <u>(21)</u>	<u>Public Purpose Trust</u> <u>(27)</u>	<u>Other Compt Approved</u> <u>(28)</u>	<u>Athletic / Activity</u> <u>(29)</u>
<b>Special And Extraordinary Items</b>						
9920	Special Items – Gains					
9930	Extraordinary Items – Gains					
5520	Special Items – Losses					
5530	Extraordinary Items – Losses					
<b>Net Change In Fund Balances</b>		<b>\$6,476,147</b>				
<b>Fund Balance</b>						
0001	Fund Balance - Beginning of Fiscal Year	26,713,022				
<b>Fund Balance - End Of Year</b>		<b>\$33,189,169</b>				

Amounts Expressed in Whole Dollars		<u>Capital Reserve (690.</u> <u>1850)</u> <u>(31)</u>	<u>Capital Reserve (1431)</u> <u>(32)</u>	<u>Other Capital Projects</u> <u>Fund</u> <u>(39)</u>	<u>Debt Service</u> <u>(40)</u>	<u>Permanent</u> <u>(90)</u>
<b>Special And Extraordinary Items</b>						
9920	Special Items – Gains					
9930	Extraordinary Items – Gains					
5520	Special Items – Losses					
5530	Extraordinary Items – Losses					
<b>Net Change In Fund Balances</b>				<b>(\$6,711,303)</b>	<b>(\$30,170,953)</b>	
<b>Fund Balance</b>						
0001	Fund Balance - Beginning of Fiscal Year			53,265,196	30,170,952	
<b>Fund Balance - End Of Year</b>				<b>\$46,553,893</b>	<b>(\$1)</b>	



Amounts Expressed in Whole Dollars		<u>Total Governmental</u> <u>Funds</u>
<b>Special And Extraordinary Items</b>		
9920	Special Items – Gains	
9930	Extraordinary Items – Gains	
5520	Special Items – Losses	
5530	Extraordinary Items – Losses	
<b>Net Change In Fund Balances</b>		<b>(\$30,406,109)</b>
<b>Fund Balance</b>		
0001	Fund Balance - Beginning of Fiscal Year	110,149,170
<b>Fund Balance - End Of Year</b>		<b>\$79,743,061</b>

Amounts Expressed in Whole Dollars		<u>Food Service</u> <u>(51)</u>	<u>Child Care</u> <u>Operations</u> <u>(52)</u>	<u>Other Enterprise</u> <u>(58)</u>	<u>TOTAL</u>	<u>Internal Service</u> <u>(60)</u>
<b>Assets And Deferred Outflows Of Resources</b>						
<b>Current Assets</b>						
0100	Cash and Cash Equivalents	439,967			439,967	
0110	Investments					
0130	Due From Other Funds					
0141	Due From Other Governments					
0142	State Revenue Receivable	8,987			8,987	
0143	Federal Revenue Receivable	206,497			206,497	
0146	Due from Primary Government					
0147	Due from Component Unit					
0150	Other Receivables					
0170	Inventories					
0180	Prepaid Expenses (Expenditures)					
0190	Other Current Assets					
<b>Total Current Assets</b>		<b>\$655,451</b>			<b>\$655,451</b>	
<b>Noncurrent Assets</b>						
0211	Land					
0212	Site Improvements (Net)					
0220	Buildings and Building Improvements (Net)					
0230	Machinery, Equipment and Furniture (Net)	383,437			383,437	
0250	Construction in Progress					
0260	Long Term Prepayments					
0290	Other Noncurrent Assets					
<b>Total Noncurrent Assets</b>		<b>\$383,437</b>			<b>\$383,437</b>	
0910	Deferred Outflows of Resources					
<b>Total Assets And Deferred Outflows Of Resources</b>		<b>\$1,038,888</b>			<b>\$1,038,888</b>	

LEA : 122092102      Central Bucks SD

Printed 12/1/2020 8:54:00 AM

Amounts Expressed in Whole Dollars	<u>Food Service</u> <u>(51)</u>	<u>Child Care</u> <u>Operations</u> <u>(52)</u>	<u>Other Enterprise</u> <u>(58)</u>	<u>TOTAL</u>	<u>Internal Service</u> <u>(60)</u>
<b>Liabilities And Deferred Inflows Of Resources And Net Position</b>					
<b>Current Liabilities</b>					
0400 Due to Other Funds	15,073			15,073	
0411 Due to Other Governments					
0413 Due to Component Unit					
0420 Accounts Payable	359,505			359,505	
0430 Contracts Payable					
0440 Current Portion of Long-Term Debt					
0450 Short-Term Payables					
0461 Accrued Salaries and Benefits					
0462 Payroll Deductions and Withholding					
0480 Unearned Revenues	218,979			218,979	
0490 Other Current Liabilities					
<b>Total Current Liabilities</b>	<b>\$593,557</b>			<b>\$593,557</b>	
<b>Noncurrent Liabilities</b>					
0510 Bonds Payable					
0520 Extended-Term Financing Agreements Payable					
0530 Lease-Purchase Obligations					
0540 Accumulated Compensated Absences					
0550 Authority Lease Obligations					
0560 Other Post-Employment Benefits (OPEB)					
0570 Net Pension Liability					
0599 Other Noncurrent Liabilities					
<b>Total Noncurrent Liabilities</b>					
<b>Total Liabilities</b>	<b>\$593,557</b>			<b>\$593,557</b>	
0950 Deferred Inflows of Resources					
<b>Net Position</b>					
0791 Net Investment in Capital Assets					
0008 Restricted Net Position (0792 – 0798)	445,331			445,331	
0799 Unrestricted Net Position					
<b>Total Net Position</b>	<b>\$445,331</b>			<b>\$445,331</b>	
<b>Total Liabilities And Deferred Inflows Of Resources And Net Position</b>	<b>\$1,038,888</b>			<b>\$1,038,888</b>	

Amounts Expressed in Whole Dollars	Food Service (51)	Child Care Operations (52)	Other Enterprise (58)	TOTAL	Internal Service (60)
<b>Operating Revenues</b>					
6600 Food Service Revenue	2,610,633			2,610,633	
0071 Charges for Services					
0072 Other Operating Revenue					
<b>Total Operating Revenues</b>	<b>\$2,610,633</b>			<b>\$2,610,633</b>	
<b>Operating Expenses</b>					
100 Personnel Services – Salaries					
200 Personnel Services – Employee Benefits					
300 Purchased Professional and Technical Services	27,370			27,370	
400 Purchased Property Services	271,895			271,895	
500 Other Purchased Services	3,401,829			3,401,829	
600 Supplies	20,435			20,435	
740 Depreciation	56,744			56,744	
810 Dues and Fees	15,260			15,260	
890 Miscellaneous Expenditures					
<b>Total Operating Expenses</b>	<b>\$3,793,533</b>			<b>\$3,793,533</b>	
<b>Operating Income (Loss)</b>	<b>(\$1,182,900)</b>			<b>(\$1,182,900)</b>	
<b>Non Operating Revenues (Expenses)</b>					
6500 Earnings on Investments	2,228			2,228	
6920 Contributions and Donations from Private Sources					
6930 Gains or Losses on Sale of Fixed Assets					
6991 Refunds of a Prior Year Expenditure					
7000 Revenue from State Sources	60,681			60,681	
8000 Revenue from Federal Sources	860,216			860,216	
9990 Insurance Recoveries					
820 Claims and Judgments Against the LEA					
830 Interest					
<b>TOTAL Non Operating Revenues (Expenses)</b>	<b>\$923,125</b>			<b>\$923,125</b>	
<b>Income (Loss) Before Contributions And Transfers</b>	<b>(\$259,775)</b>			<b>(\$259,775)</b>	

Amounts Expressed in Whole Dollars	<u>Food Service</u> <u>(51)</u>	<u>Child Care Operations</u> <u>(52)</u>	<u>Other Enterprise</u> <u>(58)</u>	<u>TOTAL</u>	<u>Internal Service</u> <u>(60)</u>
<b>Contributions, Transfers, and Special and Extraordinary Items</b>					
5200 Interfund Transfers – Out					
5300 Transfers Out to Component Units/Primary Governments					
5520 Special Items – Losses					
5530 Extraordinary Items – Losses					
9300 Interfund Transfers - IN					
9500 Capital Contributions					
9700 Transfers IN From Component Units/Primary Governments					
9920 Special Items – Gains					
9930 Extraordinary Items – Gains					
<b>Change In Net Position</b>	<b>(\$259,775)</b>			<b>(\$259,775)</b>	
0002 Net Position - Beginning of Fiscal Year	705,107			705,107	
0003 Accounting Changes / Residual Equity Transfers					
<b>Net Position - End Of Year</b>	<b>\$445,332</b>			<b>\$445,332</b>	

LEA : 122092102      Central Bucks SD

Printed 12/1/2020 8:54:11 AM

Amounts Expressed in Whole Dollars	<u>Food Service</u> <u>(51)</u>	<u>Child Care Operations</u> <u>(52)</u>	<u>Other Enterprise</u> <u>(58)</u>	<u>TOTAL</u>	<u>Internal Service</u> <u>(60)</u>
<b>Cash Flows From Operating Activities</b>					
0011 Cash Receipts From Users	2,610,633			2,610,633	
0012 Cash Receipts From Assessments Made to Other Funds					
0013 Cash Receipts From Earnings on Investments					
0014 Cash Receipts From Other Operating Revenue					
0015 Cash Payments To Employees For Services					
0016 Cash Payments For Insurance Claims					
0017 Cash Payments To Suppliers For Goods and Services	3,793,534			3,793,534	
0018 Cash Payments For Other Operating Expenses					
<b>Net Cash Provided By (Used For) Operating Activities</b>	<b>(\$1,182,901)</b>			<b>(\$1,182,901)</b>	
<b>Cash Flows From Non-Capital Financing Activities</b>					
0021 Receipts From Local Sources - 6000					
0022 Receipts From State Sources - 7000	60,681			60,681	
0023 Receipts From Federal Sources -8000	860,216			860,216	
0024 Notes and Loans Received (Repaid)					
0025 Interest Paid on Notes/Loans - 5100-830					
0026 Operating Transfers In (Out)/Residual Equity Trans					
0027 Operating Transfers In (Out) Primary Government / Comp Unit					
0028 Receipts From Refund of Prior Year Expenditures - 6991					
0029 Special and Extraordinary Gains (losses)					
0030 Receipts from Insurance Recoveries -9990					
<b>Net Cash Prov By (Used for) Non-Capital Financing Activities</b>	<b>\$920,897</b>			<b>\$920,897</b>	
<b>Cash Flows From Capital and Related Financing Activities</b>					
0031 Payments For Fac Acq, Const, and Imp - 4000					
0032 Gain / (Loss) on Sale of Fixed Assets - 6930					
0033 Proceeds From Extended Term Financing - 9200					
0034 Principal Paid on Financing Agreements					
0035 Interest Paid on Financing Agreements - 5100-830					
0036 (Inc) Dec in Contributed Capital					
<b>Net Cash Prov By (Used for) Capital and Related Financing Activities</b>					
<b>Cash Flows From Investing Activities</b>					
0041 Earnings on Investments - 6500	2,228			2,228	
0042 Purchase of Inv Securities / Deposits to Inv Pools					
0043 Receipts From Investment Pool Withdrawals					
0044 Proceeds from Sale and Maturity of Inv Securities					

LEA : 122092102      Central Bucks SD

Printed 12/1/2020 8:54:11 AM

0045   Loans Received (Paid)

Net Cash Prov By (Used for) Investing Activities	\$2,228	\$2,228
--	---------	---------

LEA : 122092102      Central Bucks SD

Printed 12/1/2020 8:54:11 AM

	Food Service (51)	Child Care Operations (52)	Other Enterprise (58)	TOTAL	Internal Service (60)
Net Increase (Decrease) in Cash Flows	(259,776)			(259,776)	
0004 Cash and Cash Equivalents Beginning of Year	452,786			452,786	
Cash and Cash Equivalents at Year End	\$193,010			\$193,010	
Reconciliation of Operating Income (Loss) To Net Cash Provided by (Used For) Operating Activities					
0005 Operating Income (Loss) per REP	(1,182,900)			(1,182,900)	
Adjustments					
0051 Depreciation and Net Amortization					
0052 Provision for Uncollectible Accounts					
0053 Other Adjustments					
Effect of Changes in Assets, Liabilities, Deferred Outflows and Deferred Inflows					
0054 (Inc) Dec In Accounts Receivable (0120-0150)					
0055 Advances to Other Funds (0160)					
0056 (Inc) Dec in Inventories (0170)					
0057 (Inc) Dec in Prepaid Expenses (0180)					
0058 (Inc) Dec in Other Current or Noncurrent Assets					
0064 Deferred Outflows (0910)					
0059 Inc (Dec) in Accounts Payable (0400-0450)					
0060 Inc (Dec) in Accrued Salaries/Benefits (0461)					
0065 Inc (Dec) in Net Pension Liabilities (0570)					
0066 Inc (Dec) in Other Postemp Benefit Oblig (0560)					
0061 Inc (Dec) in Payroll Deductions/Withholding (0462)					
0062 Inc (Dec) in Unearned Revenue (0480)					
0063 Inc (Dec) in Other Current or Noncurrent Liabilities					
0067 Deferred Inflows (0950)					
Total Adjustments					
Cash Provided By (Used for) Total	(\$1,182,900)			(\$1,182,900)	



COMBINED STATEMENT OF CASH FLOWS  
SCHEDULE OF NONCASH INVESTING, CAPITAL, AND FINANCING ACTIVITIES

Explanation of Transaction and Balance Sheet Effect	Amount
Total	

LEA : 122092102      Central Bucks SD

Printed 12/1/2020 8:54:14 AM

Amounts Expressed in Whole Dollars	<u>Private Purpose Trust</u> <u>(71)</u>	<u>Investment Trust</u> <u>(72)</u>	<u>Pension Trust</u> <u>(73)</u>	<u>Student Activity Custodial</u> <u>(81)</u>
<b>Assets And Deferred Outflows Of Resources</b>				
<b>Assets</b>				
0100 Cash and Cash Equivalents	89,439			
0110 Investments				
0130 Due From Other Funds				
0140 Due from Other Governments, Primary Government and Component Units				
0150 Other Receivables				
0170 Inventories				
0180 Prepaid Expenses (Expenditures)				
0190 Other Current Assets				
0220 Buildings and Building Improvements (Net)				
0230 Machinery, Equipment and Furniture (Net)				
<b>Total Assets</b>	<b>\$89,439</b>			
0910 Deferred Outflows of Resources				
<b>Total Assets And Deferred Outflows Of Resources</b>	<b>\$89,439</b>			

LEA : 122092102      Central Bucks SD

Printed 12/1/2020 8:54:14 AM

Amounts Expressed in Whole Dollars		<u>Other Custodial</u> <u>(89)</u>	<u>Fiduciary Component Units</u> <u>(98)</u>	<u>Total Fiduciary Funds</u>
<b>Assets And Deferred Outflows Of Resources</b>				
<b>Assets</b>				
0100	Cash and Cash Equivalents			89,439
0110	Investments			
0130	Due From Other Funds			
0140	Due from Other Governments, Primary Government and Component Units			
0150	Other Receivables			
0170	Inventories			
0180	Prepaid Expenses (Expenditures)			
0190	Other Current Assets			
0220	Buildings and Building Improvements (Net)			
0230	Machinery, Equipment and Furniture (Net)			
<b>Total Assets</b>				<b>\$89,439</b>
0910	Deferred Outflows of Resources			
<b>Total Assets And Deferred Outflows Of Resources</b>				<b>\$89,439</b>

LEA : 122092102      Central Bucks SD

Printed 12/1/2020 8:54:14 AM

Amounts Expressed in Whole Dollars		<u>Private Purpose Trust</u>	<u>Investment Trust</u>	<u>Pension Trust</u>	<u>Student Activity Custodial</u>
		<u>(71)</u>	<u>(72)</u>	<u>(73)</u>	<u>(81)</u>
<b>Liabilities, Deferred Inflows Of Resources And Net Position</b>					
<b>Liabilities</b>					
0400	Due to Other Funds				
0410	Due to Other Governments, Primary Government and Component Units				
0420	Accounts Payable				
0430	Contracts Payable				
0450	Short-Term Payables				
0460	Payroll Accruals and Withholdings				
0480	Unearned Revenues				
0490	Other Current Liabilities				
<b>Total Liabilities</b>					
0950	Deferred Inflows of Resources				
<b>Net Position</b>					
0791	Net Investment in Capital Assets				
0009	Restricted Net Position (0792 – 0798)				
0799	Unrestricted Net Position		89,439		
<b>Total Net Position</b>			<b>\$89,439</b>		
<b>Total Liabilities, Deferred Inflows Of Resources And Net Position</b>			<b>\$89,439</b>		

LEA : 122092102      Central Bucks SD

Printed 12/1/2020 8:54:14 AM

Amounts Expressed in Whole Dollars		<u>Other Custodial</u>	<u>Fiduciary Component Units</u>	<u>Total Fiduciary Funds</u>
		(89)	(98)	
<b>Liabilities, Deferred Inflows Of Resources And Net Position</b>				
<b>Liabilities</b>				
0400	Due to Other Funds			
0410	Due to Other Governments, Primary Government and Component Units			
0420	Accounts Payable			
0430	Contracts Payable			
0450	Short-Term Payables			
0460	Payroll Accruals and Withholdings			
0480	Unearned Revenues			
0490	Other Current Liabilities			
<b>Total Liabilities</b>				
0950	Deferred Inflows of Resources			
<b>Net Position</b>				
0791	Net Investment in Capital Assets			
0009	Restricted Net Position (0792 – 0798)			
0799	Unrestricted Net Position			89,439
<b>Total Net Position</b>				<b>\$89,439</b>
<b>Total Liabilities, Deferred Inflows Of Resources And Net Position</b>				<b>\$89,439</b>

LEA : 122092102     Central Bucks SD

Printed 12/1/2020 8:54:16 AM

Amounts Expressed in Whole Dollars		<u>Private Purpose Trust</u> <u>(71)</u>	<u>Investment Trust</u> <u>(72)</u>	<u>Pension Trust</u> <u>(73)</u>	<u>Student Activity</u> <u>Custodial</u> <u>(81)</u>	<u>Other Custodial</u> <u>(89)</u>	<u>Fiduciary Component</u> <u>Units</u> <u>(98)</u>
<b>Additions</b>							
0091	Gifts and Contributions	21,675					
0095	Net Investment Earnings	240					
0092	Other Additions						
<b>Deductions</b>							
0093	Scholarships Awarded	13,830					
0094	Other Deductions						
<b>Change In Net Position</b>		<b>\$8,085</b>					
0006	Net Position – Beginning of Fiscal Year	81,353					
0007	Net Position Held in Trust for Pension Benefits						
<b>Net Position - End of Fiscal Year</b>		<b>\$89,438</b>					

LEA : 122092102      Central Bucks SD

Printed 12/1/2020 8:54:16 AM

Amounts Expressed in Whole Dollars		<u>Total Fiduciary</u>
		<u>Funds</u>
<b>Additions</b>		
0091	Gifts and Contributions	21,675
0095	Net Investment Earnings	240
0092	Other Additions	
<b>Deductions</b>		
0093	Scholarships Awarded	13,830
0094	Other Deductions	
<b>Change In Net Position</b>		<b>\$8,085</b>
0006	Net Position – Beginning of Fiscal Year	81,353
0007	Net Position Held in Trust for Pension Benefits	
<b>Net Position - End of Fiscal Year</b>		<b>\$89,438</b>

LEA : 122092102      Central Bucks SD

General Fund (10)

Printed 12/1/2020 8:54:20 AM

Page - 1 of 4

	Revenue Reported In Current Year	Current Year Tax Accrual	Prior Year Tax Accrual	Taxes Collected In Current Year
<b>Revenue from Local Sources</b>				
6111 Current Real Estate Taxes	219,849,122.47	357,740.66	128,208.60	219,619,590.41
6112 Interim Real Estate Taxes	1,416,626.28	348,291.11	148,600.89	1,216,936.06
6113 Public Utility Realty Taxes	229,855.87			229,855.87
6151 Current Act 511 Earned Income Taxes	26,232,069.63	5,681,919.33	4,126,311.80	24,676,462.10
6153 Current Act 511 Real Estate Transfer Taxes	4,985,307.31	259,104.91	491,622.39	5,217,824.79
6411 Delinquent Real Estate Taxes	1,567,457.44	598,130.08	661,600.59	1,630,927.95
6413 Delinquent Public Utility Realty Tax	118,553.08			118,553.08
6451 Delinquent Act 511 Earned Income Taxes	886,288.12	111,952.64	104,125.35	878,460.83
6500 Earnings on Investments	1,970,458.64			
6700 Revenues from LEA Activities	330,091.73			
6832 Federal IDEA Revenue Received as Pass Through	2,571,161.69			
6910 Rentals	29,972.14			
6920 Contributions and Donations from Private Sources	75,013.07			
6941 Regular Day School Tuition	29,565.25			
6943 Adult Education Tuition	42,488.63			
6944 Receipts from Other LEAs in Pennsylvania - Education	412,570.16			
6980 Revenue from Community Services Activities	2,501,463.19			
6991 Refunds of a Prior Year Expenditure	700.36			
6999 Other Revenues Not Specified Above	50,378.07			
<b>TOTAL Revenue from Local Sources</b>	<b>\$263,299,143.13</b>	<b>\$7,357,138.73</b>	<b>\$5,660,469.62</b>	<b>\$253,588,611.09</b>



	Revenue Reported In Current Year			
<b><u>Revenue from State Sources</u></b>				
7111 Basic Education Funding-Formula	18,637,039.00			
7112 Basic Education Funding-Social Security	5,541,529.66			
7160 Tuition for Orphans Subsidy	63,086.78			
7271 Special Education funds for School-Aged Pupils	7,256,416.84			
7311 Pupil Transportation Subsidy	2,583,411.09			
7312 Nonpublic and Charter School Pupil Transportation Subsidy	637,945.00			
7320 Rental and Sinking Fund Payments / Building Reimbursement Subsidy	3,544,386.52			
7330 Health Services (Medical, Dental, Nurse, Act 25)	349,301.89			
7340 State Property Tax Reduction Allocation	6,217,942.31			
7505 Ready to Learn Block Grant	1,024,042.00			
7506 PAsmart Grants	35,000.00			
7599 Other State Revenue Not Listed Elsewhere in the 7000 Series	5,000.00			
7820 State Share of Retirement Contributions	28,342,553.01			
<b>TOTAL Revenue from State Sources</b>	<b>\$74,237,654.10</b>			

	Revenue Reported In Current Year			
<b><u>Revenue from Federal Sources</u></b>				
8514 NCLB, Title I - Improving the Academic Achievement of the Disadvantaged	879,220.52			
8515 NCLB, Title II - Preparing, Training and Recruiting High Quality Teachers and Principals	305,852.51			
8516 NCLB, Title III - Language Instruction for Limited English Proficient and Immigrant Students	51,092.56			
8517 NCLB, Title IV - 21St Century Schools	48,173.84			
8810 School-Based Access Medicaid Reimbursement Program (SBAP) Reimbursements (Access)	2,522,613.00			
8820 Medical Assistance Reimbursement for Administrative Claiming (Quarterly) Program	31,538.50			
<b>TOTAL Revenue from Federal Sources</b>	<b>\$3,838,490.93</b>			

	Revenue Reported In Current Year			
<b><u>Other Financing Sources</u></b>				
9400 Sale of or Compensation for Loss of Fixed Assets	10,494.00			
<b>TOTAL Other Financing Sources</b>	<b>\$10,494.00</b>			
<b>TOTAL FROM ALL SOURCES</b>	<b>\$341,385,782.16</b>	<b>\$7,357,138.73</b>	<b>\$5,660,469.62</b>	<b>\$253,588,611.09</b>

LEA : 122092102      Central Bucks SD

Printed 12/1/2020 8:54:24 AM

	<u>General Fund (10)</u>	<u>Student Sponsored Activity Fund (21)</u>	<u>Public Purpose Trust (27)</u>	<u>Other Compt Approved (28)</u>	<u>Athletic / Activity (29)</u>	<u>Capital Reserve (690, 1850) (31)</u>
<b>6000 Revenue from Local Sources</b>						
6111 Current Real Estate Taxes	219,849,122.47					
6112 Interim Real Estate Taxes	1,416,626.28					
6113 Public Utility Realty Taxes	229,855.87					
6151 Current Act 511 Earned Income Taxes	26,232,069.63					
6153 Current Act 511 Real Estate Transfer Taxes	4,985,307.31					
6411 Delinquent Real Estate Taxes	1,567,457.44					
6413 Delinquent Public Utility Realty Tax	118,553.08					
6451 Delinquent Act 511 Earned Income Taxes	886,288.12					
6500 Earnings on Investments	1,970,458.64					
6700 Revenues from LEA Activities	330,091.73					
6832 Federal IDEA Revenue Received as Pass Through	2,571,161.69					
6910 Rentals	29,972.14					
6920 Contributions and Donations from Private Sources	75,013.07					
6941 Regular Day School Tuition	29,565.25					
6943 Adult Education Tuition	42,488.63					
6944 Receipts from Other LEAs in Pennsylvania - Education	412,570.16					
6980 Revenue from Community Services Activities	2,501,463.19					
6991 Refunds of a Prior Year Expenditure	700.36					
6999 Other Revenues Not Specified Above	50,378.07					
<b>6000 Total Revenue from Local Sources</b>	<b>\$263,299,143.13</b>					
<b>7000 Revenue from State Sources</b>						
7111 Basic Education Funding-Formula	18,637,039.00					
7112 Basic Education Funding-Social Security	5,541,529.66					
7160 Tuition for Orphans Subsidy	63,086.78					
7271 Special Education funds for School-Aged Pupils	7,256,416.84					
7311 Pupil Transportation Subsidy	2,583,411.09					
7312 Nonpublic and Charter School Pupil Transportation Subsidy	637,945.00					
7320 Rental and Sinking Fund Payments / Building Reimbursement Subsidy	3,544,386.52					
7330 Health Services (Medical, Dental, Nurse, Act 25)	349,301.89					
7340 State Property Tax Reduction Allocation	6,217,942.31					
7505 Ready to Learn Block Grant	1,024,042.00					
7506 PAsmart Grants	35,000.00					
7599 Other State Revenue Not Listed Elsewhere in the 7000 Series	5,000.00					
7820 State Share of Retirement Contributions	28,342,553.01					
<b>7000 Total Revenue from State Sources</b>	<b>\$74,237,654.10</b>					

LEA : 122092102      Central Bucks SD

Printed 12/1/2020 8:54:24 AM

	Capital Reserve (1431) (32)	Other Capital Projects Fund (39)	Debt Service (40)	Permanent (90)	Total
<b>6000 Revenue from Local Sources</b>					
6111 Current Real Estate Taxes					219,849,122.47
6112 Interim Real Estate Taxes					1,416,626.28
6113 Public Utility Realty Taxes					229,855.87
6151 Current Act 511 Earned Income Taxes					26,232,069.63
6153 Current Act 511 Real Estate Transfer Taxes					4,985,307.31
6411 Delinquent Real Estate Taxes					1,567,457.44
6413 Delinquent Public Utility Realty Tax					118,553.08
6451 Delinquent Act 511 Earned Income Taxes					886,288.12
6500 Earnings on Investments		1,162,001.44	48,480.03		3,180,940.11
6700 Revenues from LEA Activities		345,128.79			675,220.52
6832 Federal IDEA Revenue Received as Pass Through					2,571,161.69
6910 Rentals					29,972.14
6920 Contributions and Donations from Private Sources					75,013.07
6941 Regular Day School Tuition					29,565.25
6943 Adult Education Tuition					42,488.63
6944 Receipts from Other LEAs in Pennsylvania - Education					412,570.16
6980 Revenue from Community Services Activities					2,501,463.19
6991 Refunds of a Prior Year Expenditure					700.36
6999 Other Revenues Not Specified Above		568.99			50,947.06
<b>6000 Total Revenue from Local Sources</b>		<b>\$1,507,699.22</b>	<b>\$48,480.03</b>		<b>\$264,855,322.38</b>
<b>7000 Revenue from State Sources</b>					
7111 Basic Education Funding-Formula					18,637,039.00
7112 Basic Education Funding-Social Security					5,541,529.66
7160 Tuition for Orphans Subsidy					63,086.78
7271 Special Education funds for School-Aged Pupils					7,256,416.84
7311 Pupil Transportation Subsidy					2,583,411.09
7312 Nonpublic and Charter School Pupil Transportation Subsidy					637,945.00
7320 Rental and Sinking Fund Payments / Building Reimbursement Subsidy					3,544,386.52
7330 Health Services (Medical, Dental, Nurse, Act 25)					349,301.89
7340 State Property Tax Reduction Allocation					6,217,942.31
7505 Ready to Learn Block Grant					1,024,042.00
7506 PAsmart Grants					35,000.00
7599 Other State Revenue Not Listed Elsewhere in the 7000 Series					5,000.00
7820 State Share of Retirement Contributions					28,342,553.01
<b>7000 Total Revenue from State Sources</b>					<b>\$74,237,654.10</b>

LEA : 122092102      Central Bucks SD

Printed 12/1/2020 8:54:24 AM

	<u>General Fund (10)</u>	<u>Student Sponsored Activity Fund (21)</u>	<u>Public Purpose Trust (27)</u>	<u>Other Compt Approved (28)</u>	<u>Athletic / Activity (29)</u>	<u>Capital Reserve (690, 1850) (31)</u>
<b>8000 Revenue from Federal Sources</b>						
8514 NCLB, Title I - Improving the Academic Achievement of the Disadvantaged	879,220.52					
8515 NCLB, Title II - Preparing, Training and Recruiting High Quality Teachers and Principals	305,852.51					
8516 NCLB, Title III - Language Instruction for Limited English Proficient and Immigrant Students	51,092.56					
8517 NCLB, Title IV - 21St Century Schools	48,173.84					
8810 School-Based Access Medicaid Reimbursement Program (SBAP) Reimbursements (Access)	2,522,613.00					
8820 Medical Assistance Reimbursement for Administrative Claiming (Quarterly) Program	31,538.50					
<b>8000 Total Revenue from Federal Sources</b>	<b>\$3,838,490.93</b>					
<b>9000 Other Financing Sources</b>						
9310 General Fund Transfers						
9340 Debt Service Fund Transfers						
9400 Sale of or Compensation for Loss of Fixed Assets	10,494.00					
<b>9000 Total Other Financing Sources</b>	<b>\$10,494.00</b>					
<b>Total From All Sources</b>	<b>\$341,385,782.16</b>					

LEA : 122092102     Central Bucks SD

Printed 12/1/2020 8:54:24 AM

	<u>Capital Reserve</u> <u>(1431) (32)</u>	<u>Other Capital</u> <u>Projects Fund (39)</u>	<u>Debt Service (40)</u>	<u>Permanent (90)</u>	<u>Total</u>
<b>8000 Revenue from Federal Sources</b>					
8514 NCLB, Title I - Improving the Academic Achievement of the Disadvantaged					879,220.52
8515 NCLB, Title II - Preparing, Training and Recruiting High Quality Teachers and Principals					305,852.51
8516 NCLB, Title III - Language Instruction for Limited English Proficient and Immigrant Students					51,092.56
8517 NCLB, Title IV - 21st Century Schools					48,173.84
8810 School-Based Access Medicaid Reimbursement Program (SBAP) Reimbursements (Access)					2,522,613.00
8820 Medical Assistance Reimbursement for Administrative Claiming (Quarterly) Program					31,538.50
<b>8000 Total Revenue from Federal Sources</b>					<b>\$3,838,490.93</b>
<b>9000 Other Financing Sources</b>					
9310 General Fund Transfers		15,300,000.00			15,300,000.00
9340 Debt Service Fund Transfers		250,180.79			250,180.79
9400 Sale of or Compensation for Loss of Fixed Assets					10,494.00
<b>9000 Total Other Financing Sources</b>		<b>\$15,550,180.79</b>			<b>\$15,560,674.79</b>
<b>Total From All Sources</b>		<b>\$17,057,880.01</b>	<b>\$48,480.03</b>		<b>\$358,492,142.20</b>

LEA : 122092102     Central Bucks SD

Printed 12/1/2020 8:54:27 AM

	<u>General Fund (10)</u>	<u>Student Sponsored Activity Fund (21)</u>	<u>Public Purpose Trust (27)</u>	<u>Other Compt Approved (28)</u>	<u>Athletic / Activity (29)</u>	<u>Capital Reserve (690. 1850) (31)</u>
Revenue from Local Sources	263,299,143.13					
Revenue from State Sources	74,237,654.10					
Revenue from Federal Sources	3,838,490.93					
Other Financing Sources	10,494.00					
Total From All Sources	\$341,385,782.16					



LEA : 122092102     Central Bucks SD

Printed 12/1/2020 8:54:27 AM

	<u>Capital Reserve (1431)</u> <u>(32)</u>	<u>Other Capital Projects</u> <u>Fund (39)</u>	<u>Debt Service (40)</u>	<u>Permanent (90)</u>	<u>Total</u>
Revenue from Local Sources		1,507,699.22	48,480.03		264,855,322.38
Revenue from State Sources					74,237,654.10
Revenue from Federal Sources					3,838,490.93
Other Financing Sources		15,550,180.79			15,560,674.79
Total From All Sources		\$17,057,880.01	\$48,480.03		\$358,492,142.20

LEA : 122092102      Central Bucks SD

Printed 12/1/2020 8:54:37 AM

<b>General Fund (10)</b>	
<b>1000 Instruction</b>	<b><u>Total</u></b>
<b>100 <u>Personnel Services – Salaries</u></b>	
100 Personnel Services – Salaries	115,488,966.07
<b>Total Personnel Services – Salaries</b>	<b>\$115,488,966.07</b>
<b>200 <u>Personnel Services – Employee Benefits</u></b>	
220 Social Security Contributions	8,688,848.07
230 PSERS Retirement Contributions	39,560,135.47
250 Unemployment Compensation	186,763.76
260 Workers' Compensation	831,039.96
270 Group Insurance – Self-Insurance	20,481,972.65
<b>Total Personnel Services – Employee Benefits</b>	<b>\$69,748,759.91</b>
<b>300 <u>Purchased Professional and Technical Services</u></b>	
322 Professional Educational Services – Ius	2,361,368.19
323 Professional Educational Services – Other Educational Agencies	27,996.88
329 Professional Educational Services – Other	1,682,671.93
330 Other Professional Services	61,312.68
<b>Total Purchased Professional and Technical Services</b>	<b>\$4,133,349.68</b>
<b>400 <u>Purchased Property Services</u></b>	
430 Repairs and Maintenance Services	217,414.34
440 Rentals	362,561.25
<b>Total Purchased Property Services</b>	<b>\$579,975.59</b>
<b>500 <u>Other Purchased Services</u></b>	
530 Communications	15.94
550 Printing and Binding	3,392.12
561 Tuition To Other School Districts Within the State	114,049.93
562 Tuition To Pennsylvania Charter Schools	1,755,053.18
564 Tuition To Career and Technology Centers	4,824,859.66
567 Tuition To Approved Private Schools (APS) and PA Chartered Schools for the Deaf and Blind	158,743.09
568 Tuition To Private Residential Rehabilitative Institutions (PRRI) [In-State] and Detention Centers	532,430.06
569 Tuition – Other	3,050,034.31
580 Travel	45,238.52
594 IU Payment By Withholding for Institutionalized Children's Programs – Special Classes	9,250.08
<b>Total Other Purchased Services</b>	<b>\$10,493,066.89</b>
<b>600 <u>Supplies</u></b>	
610 General Supplies	1,285,897.25
620 Energy	161,824.53
640 Books and Periodicals	2,015,769.28
650 Supplies & Fees – Technology Related	207,439.06
<b>Total Supplies</b>	<b>\$3,670,930.12</b>
<b>700 <u>Property</u></b>	
752 Capital Equipment – Original and Additional	30,153.91
762 Capitalized Equipment - Replacement	70,212.50
<b>Total Property</b>	<b>\$100,366.41</b>

LEA : 122092102     Central Bucks SD

Printed 12/1/2020 8:54:37 AM

General Fund (10)	
1000 Instruction	<u>Total</u>
800 <u>Other Objects</u>	
810 Dues and Fees	6,762.00
Total Other Objects	\$6,762.00
Total 1000 Instruction	\$204,222,176.67

LEA : 122092102      Central Bucks SD

Printed 12/1/2020 8:54:37 AM

General Fund (10)

1100 Regular Programs – Elementary / Secondary	Elementary	Secondary	Federal	Total
<b>100 Personnel Services – Salaries</b>				
100 Personnel Services – Salaries	43,913,375.71	45,276,822.71	922,617.22	90,112,815.64
<b>Total Personnel Services – Salaries</b>	<b>\$43,913,375.71</b>	<b>\$45,276,822.71</b>	<b>\$922,617.22</b>	<b>\$90,112,815.64</b>
<b>200 Personnel Services – Employee Benefits</b>				
220 Social Security Contributions	3,328,643.32	3,449,864.32	70,015.07	6,848,522.71
230 PSERS Retirement Contributions	15,064,513.20	15,536,073.34	300,010.75	30,900,597.29
250 Unemployment Compensation	48,529.55	49,213.99	639.40	98,382.94
260 Workers' Compensation	293,813.37	263,616.93	20,804.13	578,234.43
270 Group Insurance – Self-Insurance	6,958,030.92	6,851,495.25	32,750.68	13,842,276.85
<b>Total Personnel Services – Employee Benefits</b>	<b>\$25,693,530.36</b>	<b>\$26,150,263.83</b>	<b>\$424,220.03</b>	<b>\$52,268,014.22</b>
<b>300 Purchased Professional and Technical Services</b>				
329 Professional Educational Services – Other	13,436.10	23,415.00		36,851.10
<b>Total Purchased Professional and Technical Services</b>	<b>\$13,436.10</b>	<b>\$23,415.00</b>		<b>\$36,851.10</b>
<b>400 Purchased Property Services</b>				
430 Repairs and Maintenance Services	140,875.96	75,559.78		216,435.74
440 Rentals	191,474.46	171,086.79		362,561.25
<b>Total Purchased Property Services</b>	<b>\$332,350.42</b>	<b>\$246,646.57</b>		<b>\$578,996.99</b>
<b>500 Other Purchased Services</b>				
530 Communications		15.94		15.94
550 Printing and Binding		898.00		898.00
562 Tuition To Pennsylvania Charter Schools	173,212.92	867,126.05		1,040,338.97
580 Travel	7,345.83	18,050.09		25,395.92
<b>Total Other Purchased Services</b>	<b>\$180,558.75</b>	<b>\$886,090.08</b>		<b>\$1,066,648.83</b>
<b>600 Supplies</b>				
610 General Supplies	495,563.87	627,922.77	69,183.20	1,192,669.84
620 Energy	19,474.58	135,014.45		154,489.03
640 Books and Periodicals	1,871,185.74	89,700.68		1,960,886.42
650 Supplies & Fees – Technology Related	54,471.29	78,199.46		132,670.75
<b>Total Supplies</b>	<b>\$2,440,695.48</b>	<b>\$930,837.36</b>	<b>\$69,183.20</b>	<b>\$3,440,716.04</b>
<b>700 Property</b>				
752 Capital Equipment – Original and Additional	131.24	24,080.87		24,212.11
762 Capitalized Equipment - Replacement		70,212.50		70,212.50
<b>Total Property</b>	<b>\$131.24</b>	<b>\$94,293.37</b>		<b>\$94,424.61</b>
<b>800 Other Objects</b>				
810 Dues and Fees	129.00	4,125.00		4,254.00
<b>Total Other Objects</b>	<b>\$129.00</b>	<b>\$4,125.00</b>		<b>\$4,254.00</b>
<b>Total 1100 Regular Programs – Elementary / Secondary</b>	<b>\$72,574,207.06</b>	<b>\$73,612,493.92</b>	<b>\$1,416,020.45</b>	<b>\$147,602,721.43</b>

LEA : 122092102      Central Bucks SD

Printed 12/1/2020 8:54:37 AM

General Fund (10)				
1110 Regular Programs				
	Elementary	Secondary	Federal	Total
100 <u>Personnel Services – Salaries</u>				
100 Personnel Services – Salaries	43,913,375.71	45,276,822.71		89,190,198.42
Total Personnel Services – Salaries	\$43,913,375.71	\$45,276,822.71		\$89,190,198.42
200 <u>Personnel Services – Employee Benefits</u>				
220 Social Security Contributions	3,328,643.32	3,449,864.32		6,778,507.64
230 PSERS Retirement Contributions	15,064,513.20	15,536,073.34		30,600,586.54
250 Unemployment Compensation	48,529.55	49,213.99		97,743.54
260 Workers' Compensation	293,813.37	263,616.93		557,430.30
270 Group Insurance – Self-Insurance	6,958,030.92	6,851,495.25		13,809,526.17
Total Personnel Services – Employee Benefits	\$25,693,530.36	\$26,150,263.83		\$51,843,794.19
300 <u>Purchased Professional and Technical Services</u>				
329 Professional Educational Services – Other	13,436.10	23,415.00		36,851.10
Total Purchased Professional and Technical Services	\$13,436.10	\$23,415.00		\$36,851.10
400 <u>Purchased Property Services</u>				
430 Repairs and Maintenance Services	140,875.96	75,559.78		216,435.74
440 Rentals	191,474.46	171,086.79		362,561.25
Total Purchased Property Services	\$332,350.42	\$246,646.57		\$578,996.99
500 <u>Other Purchased Services</u>				
530 Communications		15.94		15.94
550 Printing and Binding		898.00		898.00
562 Tuition To Pennsylvania Charter Schools	173,212.92	867,126.05		1,040,338.97
580 Travel	7,345.83	18,050.09		25,395.92
Total Other Purchased Services	\$180,558.75	\$886,090.08		\$1,066,648.83
600 <u>Supplies</u>				
610 General Supplies	495,563.87	627,922.77		1,123,486.64
620 Energy	19,474.58	135,014.45		154,489.03
640 Books and Periodicals	1,871,185.74	89,700.68		1,960,886.42
650 Supplies & Fees – Technology Related	54,471.29	78,199.46		132,670.75
Total Supplies	\$2,440,695.48	\$930,837.36		\$3,371,532.84
700 <u>Property</u>				
752 Capital Equipment – Original and Additional	131.24	24,080.87		24,212.11
762 Capitalized Equipment - Replacement		70,212.50		70,212.50
Total Property	\$131.24	\$94,293.37		\$94,424.61
800 <u>Other Objects</u>				
810 Dues and Fees	129.00	4,125.00		4,254.00
Total Other Objects	\$129.00	\$4,125.00		\$4,254.00
Total 1110 Regular Programs	\$72,574,207.06	\$73,612,493.92		\$146,186,700.98

LEA : 122092102      Central Bucks SD

Printed 12/1/2020 8:54:37 AM

General Fund (10)

1190 Federally-Funded Regular Programs

	<u>Elementary</u>	<u>Secondary</u>	<u>Federal</u>	<u>Total</u>
<b>100 <u>Personnel Services – Salaries</u></b>				
100 Personnel Services – Salaries			922,617.22	922,617.22
<b>Total Personnel Services – Salaries</b>			<b>\$922,617.22</b>	<b>\$922,617.22</b>
<b>200 <u>Personnel Services – Employee Benefits</u></b>				
220 Social Security Contributions			70,015.07	70,015.07
230 PSERS Retirement Contributions			300,010.75	300,010.75
250 Unemployment Compensation			639.40	639.40
260 Workers' Compensation			20,804.13	20,804.13
270 Group Insurance – Self-Insurance			32,750.68	32,750.68
<b>Total Personnel Services – Employee Benefits</b>			<b>\$424,220.03</b>	<b>\$424,220.03</b>
<b>600 <u>Supplies</u></b>				
610 General Supplies			69,183.20	69,183.20
<b>Total Supplies</b>			<b>\$69,183.20</b>	<b>\$69,183.20</b>
<b>Total 1190 Federally-Funded Regular Programs</b>			<b>\$1,416,020.45</b>	<b>\$1,416,020.45</b>

LEA : 122092102      Central Bucks SD

Printed 12/1/2020 8:54:37 AM

<b>General Fund (10)</b>				
<b>1200 Special Programs – Elementary / Secondary</b>	<b><u>Elementary</u></b>	<b><u>Secondary</u></b>	<b><u>Federal</u></b>	<b><u>Total</u></b>
<b>100 <u>Personnel Services – Salaries</u></b>				
100 Personnel Services – Salaries	11,979,090.59	10,668,859.22	1,708,727.28	24,356,677.09
<b>Total Personnel Services – Salaries</b>	<b>\$11,979,090.59</b>	<b>\$10,668,859.22</b>	<b>\$1,708,727.28</b>	<b>\$24,356,677.09</b>
<b>200 <u>Personnel Services – Employee Benefits</u></b>				
220 Social Security Contributions	865,052.30	771,950.02	128,556.86	1,765,559.18
230 PSERS Retirement Contributions	4,100,025.45	3,629,777.60	580,111.49	8,309,914.54
250 Unemployment Compensation	42,723.25	45,109.74	299.89	88,132.88
260 Workers' Compensation	131,128.04	103,856.16	9,759.11	244,743.31
270 Group Insurance – Self-Insurance	3,320,817.47	2,922,117.62	223,259.89	6,466,194.98
<b>Total Personnel Services – Employee Benefits</b>	<b>\$8,459,746.51</b>	<b>\$7,472,811.14</b>	<b>\$941,987.24</b>	<b>\$16,874,544.89</b>
<b>300 <u>Purchased Professional and Technical Services</u></b>				
322 Professional Educational Services – lus	665,508.79	720,967.86	974,891.54	2,361,368.19
329 Professional Educational Services – Other	84,379.39	37,242.50	1,433,331.28	1,554,953.17
330 Other Professional Services	61,312.68			61,312.68
<b>Total Purchased Professional and Technical Services</b>	<b>\$811,200.86</b>	<b>\$758,210.36</b>	<b>\$2,408,222.82</b>	<b>\$3,977,634.04</b>
<b>400 <u>Purchased Property Services</u></b>				
430 Repairs and Maintenance Services	82.20	896.40		978.60
<b>Total Purchased Property Services</b>	<b>\$82.20</b>	<b>\$896.40</b>		<b>\$978.60</b>
<b>500 <u>Other Purchased Services</u></b>				
562 Tuition To Pennsylvania Charter Schools	56,111.09	658,603.12		714,714.21
567 Tuition To Approved Private Schools (APS) and PA Chartered Schools for the Deaf and Blind	82,546.41	76,196.68		158,743.09
568 Tuition To Private Residential Rehabilitative Institutions (PRRI) [In-State] and Detention Centers	255,566.43	276,863.63		532,430.06
580 Travel	15,036.90	4,648.57		19,685.47
594 IU Payment By Withholding for Institutionalized Children's Programs – Special Classes	4,810.04	4,440.04		9,250.08
<b>Total Other Purchased Services</b>	<b>\$414,070.87</b>	<b>\$1,020,752.04</b>		<b>\$1,434,822.91</b>
<b>600 <u>Supplies</u></b>				
610 General Supplies	52,619.22	19,074.46	16,529.47	88,223.15
620 Energy	2,678.04	4,657.46		7,335.50
640 Books and Periodicals	3,308.61	45,300.09		48,608.70
650 Supplies & Fees – Technology Related	68,704.87		50.00	68,754.87
<b>Total Supplies</b>	<b>\$127,310.74</b>	<b>\$69,032.01</b>	<b>\$16,579.47</b>	<b>\$212,922.22</b>
<b>700 <u>Property</u></b>				
752 Capital Equipment – Original and Additional			5,941.80	5,941.80
<b>Total Property</b>			<b>\$5,941.80</b>	<b>\$5,941.80</b>
<b>800 <u>Other Objects</u></b>				
810 Dues and Fees	2,508.00			2,508.00
<b>Total Other Objects</b>	<b>\$2,508.00</b>			<b>\$2,508.00</b>
<b>Total 1200 Special Programs – Elementary / Secondary</b>	<b>\$21,794,009.77</b>	<b>\$19,990,561.17</b>	<b>\$5,081,458.61</b>	<b>\$46,866,029.55</b>

LEA : 122092102     Central Bucks SD

Printed 12/1/2020 8:54:37 AM

General Fund (10)

1210 Life Skills Support

	<u>Elementary</u>	<u>Secondary</u>	<u>Federal</u>	<u>Total</u>
<b>100 <u>Personnel Services – Salaries</u></b>				
100 Personnel Services – Salaries	583,084.71	550,388.69		1,133,473.40
<b>Total Personnel Services – Salaries</b>	<b>\$583,084.71</b>	<b>\$550,388.69</b>		<b>\$1,133,473.40</b>
<b>200 <u>Personnel Services – Employee Benefits</u></b>				
220 Social Security Contributions	41,098.06	39,657.46		80,755.52
230 PSERS Retirement Contributions	195,868.66	188,630.46		384,499.12
250 Unemployment Compensation	353.49	362.70		716.19
260 Workers' Compensation	11,497.74	11,801.70		23,299.44
270 Group Insurance – Self-Insurance	261,019.07	247,816.45		508,835.52
<b>Total Personnel Services – Employee Benefits</b>	<b>\$509,837.02</b>	<b>\$488,268.77</b>		<b>\$998,105.79</b>
<b>Total 1210 Life Skills Support</b>	<b>\$1,092,921.73</b>	<b>\$1,038,657.46</b>		<b>\$2,131,579.19</b>



LEA : 122092102      Central Bucks SD

Printed 12/1/2020 8:54:37 AM

General Fund (10)

1220 Sensory Support	Elementary	Secondary	Federal	Total
100 <u>Personnel Services – Salaries</u>				
100 Personnel Services – Salaries	97,246.00	111,213.00		208,459.00
<b>Total Personnel Services – Salaries</b>	<b>\$97,246.00</b>	<b>\$111,213.00</b>		<b>\$208,459.00</b>
200 <u>Personnel Services – Employee Benefits</u>				
220 Social Security Contributions	6,389.56	8,043.65		14,433.21
230 PSERS Retirement Contributions	33,345.59	38,049.13		71,394.72
250 Unemployment Compensation	14.82	14.82		29.64
260 Workers' Compensation	482.22	482.22		964.44
270 Group Insurance – Self-Insurance	15,975.96	15,975.96		31,951.92
<b>Total Personnel Services – Employee Benefits</b>	<b>\$56,208.15</b>	<b>\$62,565.78</b>		<b>\$118,773.93</b>
500 <u>Other Purchased Services</u>				
580 Travel	158.89	176.84		335.73
<b>Total Other Purchased Services</b>	<b>\$158.89</b>	<b>\$176.84</b>		<b>\$335.73</b>
600 <u>Supplies</u>				
610 General Supplies	5,899.15			5,899.15
<b>Total Supplies</b>	<b>\$5,899.15</b>			<b>\$5,899.15</b>
<b>Total 1220 Sensory Support</b>	<b>\$159,512.19</b>	<b>\$173,955.62</b>		<b>\$333,467.81</b>

LEA : 122092102     Central Bucks SD

Printed 12/1/2020 8:54:37 AM

General Fund (10)

1230 Emotional Support

	<u>Elementary</u>	<u>Secondary</u>	<u>Federal</u>	<u>Total</u>
<b>100 <u>Personnel Services – Salaries</u></b>				
100 Personnel Services – Salaries	1,787,005.70	1,453,295.09		3,240,300.79
<b>Total Personnel Services – Salaries</b>	<b>\$1,787,005.70</b>	<b>\$1,453,295.09</b>		<b>\$3,240,300.79</b>
<b>200 <u>Personnel Services – Employee Benefits</u></b>				
220 Social Security Contributions	126,359.81	104,110.22		230,470.03
230 PSERS Retirement Contributions	609,130.64	498,250.75		1,107,381.39
250 Unemployment Compensation	787.37	519.13		1,306.50
260 Workers' Compensation	25,619.84	16,891.66		42,511.50
270 Group Insurance – Self-Insurance	692,389.70	468,810.34		1,161,200.04
<b>Total Personnel Services – Employee Benefits</b>	<b>\$1,454,287.36</b>	<b>\$1,088,582.10</b>		<b>\$2,542,869.46</b>
<b>600 <u>Supplies</u></b>				
610 General Supplies	10,133.06	1,374.40		11,507.46
640 Books and Periodicals	597.55			597.55
650 Supplies & Fees – Technology Related	240.68			240.68
<b>Total Supplies</b>	<b>\$10,971.29</b>	<b>\$1,374.40</b>		<b>\$12,345.69</b>
<b>Total 1230 Emotional Support</b>	<b>\$3,252,264.35</b>	<b>\$2,543,251.59</b>		<b>\$5,795,515.94</b>

LEA : 122092102      Central Bucks SD

Printed 12/1/2020 8:54:37 AM

General Fund (10)

1240 Academic Support

	Elementary	Secondary	Federal	Total
<b>100 <u>Personnel Services – Salaries</u></b>				
100 Personnel Services – Salaries	7,474,666.99	6,740,995.64	1,708,727.28	15,924,389.91
<b>Total Personnel Services – Salaries</b>	<b>\$7,474,666.99</b>	<b>\$6,740,995.64</b>	<b>\$1,708,727.28</b>	<b>\$15,924,389.91</b>
<b>200 <u>Personnel Services – Employee Benefits</u></b>				
220 Social Security Contributions	546,957.93	491,061.38	128,556.86	1,166,576.17
230 PSERS Retirement Contributions	2,564,385.99	2,285,265.68	580,111.49	5,429,763.16
250 Unemployment Compensation	40,020.14	42,842.22	299.89	83,162.25
260 Workers' Compensation	43,174.68	30,075.73	9,759.11	83,009.52
270 Group Insurance – Self-Insurance	1,485,367.54	1,356,679.72	223,259.89	3,065,307.15
<b>Total Personnel Services – Employee Benefits</b>	<b>\$4,679,906.28</b>	<b>\$4,205,924.73</b>	<b>\$941,987.24</b>	<b>\$9,827,818.25</b>
<b>300 <u>Purchased Professional and Technical Services</u></b>				
322 Professional Educational Services – lus	665,508.79	720,967.86	974,891.54	2,361,368.19
329 Professional Educational Services – Other			1,433,331.28	1,433,331.28
<b>Total Purchased Professional and Technical Services</b>	<b>\$665,508.79</b>	<b>\$720,967.86</b>	<b>\$2,408,222.82</b>	<b>\$3,794,699.47</b>
<b>500 <u>Other Purchased Services</u></b>				
568 Tuition To Private Residential Rehabilitative Institutions (PRRI) [In-State] and Detention Centers	255,566.43	276,863.63		532,430.06
580 Travel		4,471.73		4,471.73
<b>Total Other Purchased Services</b>	<b>\$255,566.43</b>	<b>\$281,335.36</b>		<b>\$536,901.79</b>
<b>600 <u>Supplies</u></b>				
610 General Supplies	31,645.47	17,422.13	16,529.47	65,597.07
640 Books and Periodicals	1,827.56	45,300.09		47,127.65
650 Supplies & Fees – Technology Related	399.00		50.00	449.00
<b>Total Supplies</b>	<b>\$33,872.03</b>	<b>\$62,722.22</b>	<b>\$16,579.47</b>	<b>\$113,173.72</b>
<b>700 <u>Property</u></b>				
752 Capital Equipment – Original and Additional			5,941.80	5,941.80
<b>Total Property</b>			<b>\$5,941.80</b>	<b>\$5,941.80</b>
<b>Total 1240 Academic Support</b>	<b>\$13,109,520.52</b>	<b>\$12,011,945.81</b>	<b>\$5,081,458.61</b>	<b>\$30,202,924.94</b>

LEA : 122092102      Central Bucks SD

Printed 12/1/2020 8:54:37 AM

General Fund (10)

1241 Learning Support – Public	Elementary	Secondary	Federal	Total
100 <u>Personnel Services – Salaries</u>				
100 Personnel Services – Salaries	6,620,104.94	6,671,045.70	1,708,727.28	14,999,877.92
<b>Total Personnel Services – Salaries</b>	<b>\$6,620,104.94</b>	<b>\$6,671,045.70</b>	<b>\$1,708,727.28</b>	<b>\$14,999,877.92</b>
200 <u>Personnel Services – Employee Benefits</u>				
220 Social Security Contributions	484,542.54	485,954.10	128,556.86	1,099,053.50
230 PSERS Retirement Contributions	2,272,394.49	2,261,471.68	580,111.49	5,113,977.66
250 Unemployment Compensation	39,864.73	42,829.05	299.89	82,993.67
260 Workers' Compensation	38,117.59	29,647.16	9,759.11	77,523.86
270 Group Insurance – Self-Insurance	1,345,371.86	1,344,983.53	223,259.89	2,913,615.28
<b>Total Personnel Services – Employee Benefits</b>	<b>\$4,180,291.21</b>	<b>\$4,164,885.52</b>	<b>\$941,987.24</b>	<b>\$9,287,163.97</b>
300 <u>Purchased Professional and Technical Services</u>				
322 Professional Educational Services – lus	665,508.79	720,967.86	974,891.54	2,361,368.19
329 Professional Educational Services – Other			1,433,331.28	1,433,331.28
<b>Total Purchased Professional and Technical Services</b>	<b>\$665,508.79</b>	<b>\$720,967.86</b>	<b>\$2,408,222.82</b>	<b>\$3,794,699.47</b>
500 <u>Other Purchased Services</u>				
568 Tuition To Private Residential Rehabilitative Institutions (PRRI) [In-State] and Detention Centers	255,566.43	276,863.63		532,430.06
580 Travel		4,471.73		4,471.73
<b>Total Other Purchased Services</b>	<b>\$255,566.43</b>	<b>\$281,335.36</b>		<b>\$536,901.79</b>
600 <u>Supplies</u>				
610 General Supplies	10,687.85	17,422.13	16,529.47	44,639.45
640 Books and Periodicals	1,827.56	45,300.09		47,127.65
650 Supplies & Fees – Technology Related	399.00		50.00	449.00
<b>Total Supplies</b>	<b>\$12,914.41</b>	<b>\$62,722.22</b>	<b>\$16,579.47</b>	<b>\$92,216.10</b>
700 <u>Property</u>				
752 Capital Equipment – Original and Additional			5,941.80	5,941.80
<b>Total Property</b>			<b>\$5,941.80</b>	<b>\$5,941.80</b>
<b>Total 1241 Learning Support – Public</b>	<b>\$11,734,385.78</b>	<b>\$11,900,956.66</b>	<b>\$5,081,458.61</b>	<b>\$28,716,801.05</b>

LEA : 122092102      Central Bucks SD

Printed 12/1/2020 8:54:37 AM

General Fund (10)

1243 Gifted Support

	<u>Elementary</u>	<u>Secondary</u>	<u>Federal</u>	<u>Total</u>
<b>100 <u>Personnel Services – Salaries</u></b>				
100 Personnel Services – Salaries	854,562.05	69,949.94		924,511.99
<b>Total Personnel Services – Salaries</b>	<b>\$854,562.05</b>	<b>\$69,949.94</b>		<b>\$924,511.99</b>
<b>200 <u>Personnel Services – Employee Benefits</u></b>				
220 Social Security Contributions	62,415.39	5,107.28		67,522.67
230 PSERS Retirement Contributions	291,991.50	23,794.00		315,785.50
250 Unemployment Compensation	155.41	13.17		168.58
260 Workers' Compensation	5,057.09	428.57		5,485.66
270 Group Insurance – Self-Insurance	139,995.68	11,696.19		151,691.87
<b>Total Personnel Services – Employee Benefits</b>	<b>\$499,615.07</b>	<b>\$41,039.21</b>		<b>\$540,654.28</b>
<b>600 <u>Supplies</u></b>				
610 General Supplies	20,957.62			20,957.62
<b>Total Supplies</b>	<b>\$20,957.62</b>			<b>\$20,957.62</b>
<b>Total 1243 Gifted Support</b>	<b>\$1,375,134.74</b>	<b>\$110,989.15</b>		<b>\$1,486,123.89</b>

LEA : 122092102      Central Bucks SD

Printed 12/1/2020 8:54:37 AM

General Fund (10)

1270 Multi-Handicapped Support	<u>Elementary</u>	<u>Secondary</u>	<u>Federal</u>	<u>Total</u>
<b>100 <u>Personnel Services – Salaries</u></b>				
100 Personnel Services – Salaries	163,338.56	64,792.78		228,131.34
<b>Total Personnel Services – Salaries</b>	<b>\$163,338.56</b>	<b>\$64,792.78</b>		<b>\$228,131.34</b>
<b>200 <u>Personnel Services – Employee Benefits</u></b>				
220 Social Security Contributions	11,512.74	4,655.24		16,167.98
230 PSERS Retirement Contributions	55,965.98	22,217.45		78,183.43
250 Unemployment Compensation	59.28	44.46		103.74
260 Workers' Compensation	1,928.88	1,446.66		3,375.54
270 Group Insurance – Self-Insurance	63,903.84	31,951.92		95,855.76
<b>Total Personnel Services – Employee Benefits</b>	<b>\$133,370.72</b>	<b>\$60,315.73</b>		<b>\$193,686.45</b>
<b>600 <u>Supplies</u></b>				
610 General Supplies	244.49	65.00		309.49
<b>Total Supplies</b>	<b>\$244.49</b>	<b>\$65.00</b>		<b>\$309.49</b>
<b>Total 1270 Multi-Handicapped Support</b>	<b>\$296,953.77</b>	<b>\$125,173.51</b>		<b>\$422,127.28</b>

LEA : 122092102      Central Bucks SD

Printed 12/1/2020 8:54:37 AM

General Fund (10)				
1290 Special Programs - Other Support	<u>Elementary</u>	<u>Secondary</u>	<u>Federal</u>	<u>Total</u>
100 <u>Personnel Services – Salaries</u>				
100 Personnel Services – Salaries	1,873,748.63	1,748,174.02		3,621,922.65
<b>Total Personnel Services – Salaries</b>	<b>\$1,873,748.63</b>	<b>\$1,748,174.02</b>		<b>\$3,621,922.65</b>
200 <u>Personnel Services – Employee Benefits</u>				
220 Social Security Contributions	132,734.20	124,422.07		257,156.27
230 PSERS Retirement Contributions	641,328.59	597,364.13		1,238,692.72
250 Unemployment Compensation	1,488.15	1,326.41		2,814.56
260 Workers' Compensation	48,424.68	43,158.19		91,582.87
270 Group Insurance – Self-Insurance	802,161.36	800,883.23		1,603,044.59
<b>Total Personnel Services – Employee Benefits</b>	<b>\$1,626,136.98</b>	<b>\$1,567,154.03</b>		<b>\$3,193,291.01</b>
300 <u>Purchased Professional and Technical Services</u>				
329 Professional Educational Services – Other	84,379.39	37,242.50		121,621.89
330 Other Professional Services	61,312.68			61,312.68
<b>Total Purchased Professional and Technical Services</b>	<b>\$145,692.07</b>	<b>\$37,242.50</b>		<b>\$182,934.57</b>
400 <u>Purchased Property Services</u>				
430 Repairs and Maintenance Services	82.20	896.40		978.60
<b>Total Purchased Property Services</b>	<b>\$82.20</b>	<b>\$896.40</b>		<b>\$978.60</b>
500 <u>Other Purchased Services</u>				
562 Tuition To Pennsylvania Charter Schools	56,111.09	658,603.12		714,714.21
567 Tuition To Approved Private Schools (APS) and PA Chartered Schools for the Deaf and Blind	82,546.41	76,196.68		158,743.09
580 Travel	14,878.01			14,878.01
594 IU Payment By Withholding for Institutionalized Children's Programs – Special Classes	4,810.04	4,440.04		9,250.08
<b>Total Other Purchased Services</b>	<b>\$158,345.55</b>	<b>\$739,239.84</b>		<b>\$897,585.39</b>
600 <u>Supplies</u>				
610 General Supplies	4,697.05	212.93		4,909.98
620 Energy	2,678.04	4,657.46		7,335.50
640 Books and Periodicals	883.50			883.50
650 Supplies & Fees – Technology Related	68,065.19			68,065.19
<b>Total Supplies</b>	<b>\$76,323.78</b>	<b>\$4,870.39</b>		<b>\$81,194.17</b>
800 <u>Other Objects</u>				
810 Dues and Fees	2,508.00			2,508.00
<b>Total Other Objects</b>	<b>\$2,508.00</b>			<b>\$2,508.00</b>
<b>Total 1290 Special Programs - Other Support</b>	<b>\$3,882,837.21</b>	<b>\$4,097,577.18</b>		<b>\$7,980,414.39</b>

LEA : 122092102      Central Bucks SD

Printed 12/1/2020 8:54:37 AM

General Fund (10)

1300 Vocational Education

500 Other Purchased Services

	<u>Elementary</u>	<u>Secondary</u>	<u>Federal</u>	<u>Total</u>
564 Tuition To Career and Technology Centers		4,824,859.66		4,824,859.66
<b>Total Other Purchased Services</b>		<b>\$4,824,859.66</b>		<b>\$4,824,859.66</b>
<b>Total 1300 Vocational Education</b>		<b>\$4,824,859.66</b>		<b>\$4,824,859.66</b>



LEA : 122092102      Central Bucks SD

Printed 12/1/2020 8:54:37 AM

General Fund (10)				
1400 Other Instructional Programs – Elementary / Secondary	<u>Elementary</u>	<u>Secondary</u>	<u>Federal</u>	<u>Total</u>
100 <u>Personnel Services – Salaries</u>				
100 Personnel Services – Salaries	731,294.88	288,178.46		1,019,473.34
<b>Total Personnel Services – Salaries</b>	<b>\$731,294.88</b>	<b>\$288,178.46</b>		<b>\$1,019,473.34</b>
200 <u>Personnel Services – Employee Benefits</u>				
220 Social Security Contributions	53,686.19	21,079.99		74,766.18
230 PSERS Retirement Contributions	252,320.64	97,303.00		349,623.64
250 Unemployment Compensation	184.85	63.09		247.94
260 Workers' Compensation	6,012.64	2,049.58		8,062.22
270 Group Insurance – Self-Insurance	117,410.97	56,089.85		173,500.82
<b>Total Personnel Services – Employee Benefits</b>	<b>\$429,615.29</b>	<b>\$176,585.51</b>		<b>\$606,200.80</b>
300 <u>Purchased Professional and Technical Services</u>				
329 Professional Educational Services – Other		90,867.66		90,867.66
<b>Total Purchased Professional and Technical Services</b>		<b>\$90,867.66</b>		<b>\$90,867.66</b>
500 <u>Other Purchased Services</u>				
550 Printing and Binding		2,494.12		2,494.12
561 Tuition To Other School Districts Within the State		114,049.93		114,049.93
569 Tuition – Other		3,050,034.31		3,050,034.31
580 Travel	157.13			157.13
<b>Total Other Purchased Services</b>	<b>\$157.13</b>	<b>\$3,166,578.36</b>		<b>\$3,166,735.49</b>
600 <u>Supplies</u>				
610 General Supplies	1,865.09	689.83		2,554.92
640 Books and Periodicals	4,580.14	1,694.02		6,274.16
650 Supplies & Fees – Technology Related	4,389.81	1,623.63		6,013.44
<b>Total Supplies</b>	<b>\$10,835.04</b>	<b>\$4,007.48</b>		<b>\$14,842.52</b>
<b>Total 1400 Other Instructional Programs – Elementary / Secondary</b>	<b>\$1,171,902.34</b>	<b>\$3,726,217.47</b>		<b>\$4,898,119.81</b>

LEA : 122092102     Central Bucks SD

Printed 12/1/2020 8:54:37 AM

General Fund (10)

1420 Summer School

	<u>Elementary</u>	<u>Secondary</u>	<u>Federal</u>	<u>Total</u>
<b>100 <u>Personnel Services – Salaries</u></b>				
100 Personnel Services – Salaries		4,118.37		4,118.37
<b>Total Personnel Services – Salaries</b>		<b>\$4,118.37</b>		<b>\$4,118.37</b>
<b>200 <u>Personnel Services – Employee Benefits</u></b>				
220 Social Security Contributions		302.46		302.46
230 PSERS Retirement Contributions		1,412.19		1,412.19
<b>Total Personnel Services – Employee Benefits</b>		<b>\$1,714.65</b>		<b>\$1,714.65</b>
<b>Total 1420 Summer School</b>		<b>\$5,833.02</b>		<b>\$5,833.02</b>

LEA : 122092102      Central Bucks SD

Printed 12/1/2020 8:54:37 AM

<b>General Fund (10)</b>				
<b>1430 Homebound Instruction</b>	<u>Elementary</u>	<u>Secondary</u>	<u>Federal</u>	<u>Total</u>
<b>100 <u>Personnel Services – Salaries</u></b>				
100 Personnel Services – Salaries	7,637.33	10,972.50		18,609.83
<b>Total Personnel Services – Salaries</b>	<b>\$7,637.33</b>	<b>\$10,972.50</b>		<b>\$18,609.83</b>
<b>200 <u>Personnel Services – Employee Benefits</u></b>				
220 Social Security Contributions	575.67	832.78		1,408.45
230 PSERS Retirement Contributions	2,867.54	2,463.41		5,330.95
250 Unemployment Compensation	0.78	8.58		9.36
260 Workers' Compensation	25.38	279.18		304.56
<b>Total Personnel Services – Employee Benefits</b>	<b>\$3,469.37</b>	<b>\$3,583.95</b>		<b>\$7,053.32</b>
<b>300 <u>Purchased Professional and Technical Services</u></b>				
329 Professional Educational Services – Other		90,867.66		90,867.66
<b>Total Purchased Professional and Technical Services</b>		<b>\$90,867.66</b>		<b>\$90,867.66</b>
<b>500 <u>Other Purchased Services</u></b>				
550 Printing and Binding		2,494.12		2,494.12
<b>Total Other Purchased Services</b>		<b>\$2,494.12</b>		<b>\$2,494.12</b>
<b>Total 1430 Homebound Instruction</b>	<b>\$11,106.70</b>	<b>\$107,918.23</b>		<b>\$119,024.93</b>

LEA : 122092102      Central Bucks SD

Printed 12/1/2020 8:54:37 AM

General Fund (10)

1440 Alternative Regular Education Programs

	<u>Elementary</u>	<u>Secondary</u>	<u>Federal</u>	<u>Total</u>
500 <u>Other Purchased Services</u>				
561 Tuition To Other School Districts Within the State		114,049.93		114,049.93
569 Tuition – Other		3,050,034.31		3,050,034.31
<b>Total Other Purchased Services</b>		<b>\$3,164,084.24</b>		<b>\$3,164,084.24</b>
<b>Total 1440 Alternative Regular Education Programs</b>		<b>\$3,164,084.24</b>		<b>\$3,164,084.24</b>

LEA : 122092102     Central Bucks SD

Printed 12/1/2020 8:54:37 AM

General Fund (10)

1441 Adjudicated / Court-Placed Programs

Elementary                      Secondary                      Federal                      Total

500 Other Purchased Services

561 Tuition To Other School Districts Within the State		114,049.93		114,049.93
569 Tuition – Other		518,975.37		518,975.37
<b>Total Other Purchased Services</b>		<b>\$633,025.30</b>		<b>\$633,025.30</b>
<b>Total 1441 Adjudicated / Court-Placed Programs</b>		<b>\$633,025.30</b>		<b>\$633,025.30</b>

LEA : 122092102     Central Bucks SD

Printed 12/1/2020 8:54:37 AM

General Fund (10)

1442 Alternative Education Programs	<u>Elementary</u>	<u>Secondary</u>	<u>Federal</u>	<u>Total</u>
500 <u>Other Purchased Services</u>				
569 Tuition – Other		2,531,058.94		2,531,058.94
Total Other Purchased Services		\$2,531,058.94		\$2,531,058.94
Total 1442 Alternative Education Programs		\$2,531,058.94		\$2,531,058.94

LEA : 122092102     Central Bucks SD

Printed 12/1/2020 8:54:37 AM

General Fund (10)

1450 Instructional Programs Outside the Established School Day	<u>Elementary</u>	<u>Secondary</u>	<u>Federal</u>	<u>Total</u>
100 <u>Personnel Services – Salaries</u>				
100 Personnel Services – Salaries		563.15		563.15
<b>Total Personnel Services – Salaries</b>		<b>\$563.15</b>		<b>\$563.15</b>
200 <u>Personnel Services – Employee Benefits</u>				
220 Social Security Contributions		41.82		41.82
230 PSERS Retirement Contributions		193.11		193.11
<b>Total Personnel Services – Employee Benefits</b>		<b>\$234.93</b>		<b>\$234.93</b>
<b>Total 1450 Instructional Programs Outside the Established School Day</b>		<b>\$798.08</b>		<b>\$798.08</b>

LEA : 122092102     Central Bucks SD

Printed 12/1/2020 8:54:37 AM

General Fund (10)

1490 Additional Other Instructional Programs	<u>Elementary</u>	<u>Secondary</u>	<u>Federal</u>	<u>Total</u>
100 <u>Personnel Services – Salaries</u>				
100 Personnel Services – Salaries	723,657.55	272,524.44		996,181.99
<b>Total Personnel Services – Salaries</b>	<b>\$723,657.55</b>	<b>\$272,524.44</b>		<b>\$996,181.99</b>
200 <u>Personnel Services – Employee Benefits</u>				
220 Social Security Contributions	53,110.52	19,902.93		73,013.45
230 PSERS Retirement Contributions	249,453.10	93,234.29		342,687.39
250 Unemployment Compensation	184.07	54.51		238.58
260 Workers' Compensation	5,987.26	1,770.40		7,757.66
270 Group Insurance – Self-Insurance	117,410.97	56,089.85		173,500.82
<b>Total Personnel Services – Employee Benefits</b>	<b>\$426,145.92</b>	<b>\$171,051.98</b>		<b>\$597,197.90</b>
500 <u>Other Purchased Services</u>				
580 Travel	157.13			157.13
<b>Total Other Purchased Services</b>	<b>\$157.13</b>			<b>\$157.13</b>
600 <u>Supplies</u>				
610 General Supplies	1,865.09	689.83		2,554.92
640 Books and Periodicals	4,580.14	1,694.02		6,274.16
650 Supplies & Fees – Technology Related	4,389.81	1,623.63		6,013.44
<b>Total Supplies</b>	<b>\$10,835.04</b>	<b>\$4,007.48</b>		<b>\$14,842.52</b>
<b>Total 1490 Additional Other Instructional Programs</b>	<b>\$1,160,795.64</b>	<b>\$447,583.90</b>		<b>\$1,608,379.54</b>



LEA : 122092102     Central Bucks SD

Printed 12/1/2020 8:54:37 AM

General Fund (10)

1500 Nonpublic School Programs

Elementary                      Secondary                      Federal                      Total

300 Purchased Professional and Technical Services

323 Professional Educational Services – Other Educational Agencies                      27,996.88                      27,996.88

**Total Purchased Professional and Technical Services                      \$27,996.88                      \$27,996.88**

600 Supplies

610 General Supplies                      2,449.34                      2,449.34

**Total Supplies                      \$2,449.34                      \$2,449.34**

**Total 1500 Nonpublic School Programs                      \$30,446.22                      \$30,446.22**

LEA : 122092102      Central Bucks SD

Printed 12/1/2020 8:54:49 AM

General Fund (10)

2000 Support Services

Total

100	<u>Personnel Services – Salaries</u>	
100	Personnel Services – Salaries	45,557,303.96
<b>Total Personnel Services – Salaries</b>		<b>\$45,557,303.96</b>
200	<u>Personnel Services – Employee Benefits</u>	
220	Social Security Contributions	3,344,553.71
230	PSERS Retirement Contributions	15,579,380.27
240	Tuition Reimbursement	254,451.89
250	Unemployment Compensation	91,401.17
260	Workers' Compensation	351,095.33
270	Group Insurance – Self-Insurance	9,900,635.72
291	Other Retirement Plans	221,994.57
<b>Total Personnel Services – Employee Benefits</b>		<b>\$29,743,512.66</b>
300	<u>Purchased Professional and Technical Services</u>	
310	Official / Administrative Services	717,773.79
329	Professional Educational Services – Other	63,532.56
330	Other Professional Services	891,744.20
340	Technical Services	395,205.18
350	Security / Safety Services	73,699.40
360	Employee Training and Development Services	45,612.39
<b>Total Purchased Professional and Technical Services</b>		<b>\$2,187,567.52</b>
400	<u>Purchased Property Services</u>	
410	Cleaning Services	358,461.16
420	Utility Services	334,914.57
430	Repairs and Maintenance Services	2,615,613.54
440	Rentals	(88,579.42)
460	Extermination Services	22,177.00
490	Other Purchased Property Services	502,214.77
<b>Total Purchased Property Services</b>		<b>\$3,744,801.62</b>
500	<u>Other Purchased Services</u>	
511	Student Transportation Services from Another LEA Within the State	112,373.26
513	Contracted Carriers	5,798,996.42
515	Public Carriers	7,525.00
516	Student Transportation Services From the IU	638,977.37
520	Insurance – General	202,230.00
521	Fire Insurance	562,911.00
522	Automotive Liability Insurance	221,571.00
523	General Property and Liability Insurance	81,465.00
529	Other Insurance	57,370.00
530	Communications	736,343.77
549	Other Advertising/Public Relations	18,206.69
580	Travel	125,999.28
595	IU Payments By Withholding	138,767.45
596	Direct Payments To Intermediate Units	85,275.00
<b>Total Other Purchased Services</b>		<b>\$8,788,011.24</b>

LEA : 122092102      Central Bucks SD

Printed 12/1/2020 8:54:49 AM

<b>General Fund (10)</b>	
<b>2000 Support Services</b>	<b><u>Total</u></b>
<b>600 <u>Supplies</u></b>	
610 General Supplies	2,594,537.50
620 Energy	3,434,089.89
630 Food	65,527.63
640 Books and Periodicals	86,532.48
650 Supplies & Fees – Technology Related	654,244.63
<b>Total Supplies</b>	<b>\$6,834,932.13</b>
<b>700 <u>Property</u></b>	
752 Capital Equipment – Original and Additional	87,398.03
762 Capitalized Equipment - Replacement	128,022.03
<b>Total Property</b>	<b>\$215,420.06</b>
<b>800 <u>Other Objects</u></b>	
810 Dues and Fees	64,061.35
890 Miscellaneous Expenditures	10.00
<b>Total Other Objects</b>	<b>\$64,071.35</b>
<b>Total 2000 Support Services</b>	<b>\$97,135,620.54</b>

LEA : 122092102      Central Bucks SD

Printed 12/1/2020 8:54:49 AM

General Fund (10)

2100 Support Services – Students	Elementary	Secondary	Federal	Total
100 <u>Personnel Services – Salaries</u>				
100 Personnel Services – Salaries	4,034,091.31	4,200,534.49	41,553.98	8,609,914.17
<b>Total Personnel Services – Salaries</b>	<b>\$4,034,091.31</b>	<b>\$4,200,534.49</b>	<b>\$41,553.98</b>	<b>\$8,609,914.17</b>
200 <u>Personnel Services – Employee Benefits</u>				
220 Social Security Contributions	295,215.58	307,635.10	3,178.93	630,110.66
230 PSERS Retirement Contributions	1,382,266.84	1,460,037.07	14,248.86	2,968,618.84
250 Unemployment Compensation	705.91	833.81		1,699.62
260 Workers' Compensation	22,971.23	27,128.99		55,303.12
270 Group Insurance – Self-Insurance	721,417.70	791,498.61		1,650,814.07
291 Other Retirement Plans	3,166.80	3,365.98		6,532.78
<b>Total Personnel Services – Employee Benefits</b>	<b>\$2,425,744.06</b>	<b>\$2,590,499.56</b>	<b>\$17,427.79</b>	<b>\$5,313,079.09</b>
300 <u>Purchased Professional and Technical Services</u>				
329 Professional Educational Services – Other	1,120.13	29,139.42		30,259.55
330 Other Professional Services	35,546.88	33,244.12		68,791.00
<b>Total Purchased Professional and Technical Services</b>	<b>\$36,667.01</b>	<b>\$62,383.54</b>		<b>\$99,050.55</b>
500 <u>Other Purchased Services</u>				
580 Travel	1,801.41	928.00		2,729.41
<b>Total Other Purchased Services</b>	<b>\$1,801.41</b>	<b>\$928.00</b>		<b>\$2,729.41</b>
600 <u>Supplies</u>				
610 General Supplies	31,379.50	24,637.60		56,017.10
630 Food	163.07	176.65		339.72
640 Books and Periodicals	1,188.96	612.50		1,801.46
650 Supplies & Fees – Technology Related	4,474.07	2,477.72		6,951.79
<b>Total Supplies</b>	<b>\$37,205.60</b>	<b>\$27,904.47</b>		<b>\$65,110.07</b>
800 <u>Other Objects</u>				
810 Dues and Fees		45.00		45.00
<b>Total Other Objects</b>		<b>\$45.00</b>		<b>\$45.00</b>
<b>Total 2100 Support Services – Students</b>	<b>\$6,535,509.39</b>	<b>\$6,882,295.06</b>	<b>\$58,981.77</b>	<b>\$14,089,928.29</b>

LEA : 122092102      Central Bucks SD

Printed 12/1/2020 8:54:49 AM

General Fund (10)

2110 Supervision of Student Services	<u>Elementary</u>	<u>Secondary</u>	<u>Federal</u>	<u>Total</u>
100 <u>Personnel Services – Salaries</u>				
100 Personnel Services – Salaries	75,950.00	79,050.00		155,000.00
<b>Total Personnel Services – Salaries</b>	<b>\$75,950.00</b>	<b>\$79,050.00</b>		<b>\$155,000.00</b>
200 <u>Personnel Services – Employee Benefits</u>				
220 Social Security Contributions	5,765.83	6,001.16		11,766.99
230 PSERS Retirement Contributions	26,043.24	27,106.23		53,149.47
250 Unemployment Compensation	7.26	7.56		14.82
260 Workers' Compensation	236.29	245.93		482.22
270 Group Insurance – Self-Insurance	7,828.22	8,147.74		15,975.96
291 Other Retirement Plans	1,522.10	1,584.22		3,106.32
<b>Total Personnel Services – Employee Benefits</b>	<b>\$41,402.94</b>	<b>\$43,092.84</b>		<b>\$84,495.78</b>
<b>Total 2110 Supervision of Student Services</b>	<b>\$117,352.94</b>	<b>\$122,142.84</b>		<b>\$239,495.78</b>

LEA : 122092102      Central Bucks SD

Printed 12/1/2020 8:54:49 AM

General Fund (10)

2111 Supervision of Student Services – Head of Component	<u>Elementary</u>	<u>Secondary</u>	<u>Federal</u>	<u>Total</u>
<b>100 <u>Personnel Services – Salaries</u></b>				
100 Personnel Services – Salaries	75,950.00	79,050.00		155,000.00
<b>Total Personnel Services – Salaries</b>	<b>\$75,950.00</b>	<b>\$79,050.00</b>		<b>\$155,000.00</b>
<b>200 <u>Personnel Services – Employee Benefits</u></b>				
220 Social Security Contributions	5,765.83	6,001.16		11,766.99
230 PSERS Retirement Contributions	26,043.24	27,106.23		53,149.47
250 Unemployment Compensation	7.26	7.56		14.82
260 Workers' Compensation	236.29	245.93		482.22
270 Group Insurance – Self-Insurance	7,828.22	8,147.74		15,975.96
291 Other Retirement Plans	1,522.10	1,584.22		3,106.32
<b>Total Personnel Services – Employee Benefits</b>	<b>\$41,402.94</b>	<b>\$43,092.84</b>		<b>\$84,495.78</b>
<b>Total 2111 Supervision of Student Services – Head of Component</b>	<b>\$117,352.94</b>	<b>\$122,142.84</b>		<b>\$239,495.78</b>

LEA : 122092102      Central Bucks SD

Printed 12/1/2020 8:54:49 AM

General Fund (10)				
2120 Guidance Services	<u>Elementary</u>	<u>Secondary</u>	<u>Federal</u>	<u>Total</u>
100 <u>Personnel Services – Salaries</u>				
100 Personnel Services – Salaries	1,755,021.17	3,255,622.10		5,010,643.27
<b>Total Personnel Services – Salaries</b>	<b>\$1,755,021.17</b>	<b>\$3,255,622.10</b>		<b>\$5,010,643.27</b>
200 <u>Personnel Services – Employee Benefits</u>				
220 Social Security Contributions	129,293.19	238,428.71		367,721.90
230 PSERS Retirement Contributions	601,217.52	1,136,110.50		1,737,328.02
250 Unemployment Compensation	264.45	655.20		919.65
260 Workers' Compensation	8,603.94	21,319.20		29,923.14
270 Group Insurance – Self-Insurance	277,478.83	640,963.35		918,442.18
<b>Total Personnel Services – Employee Benefits</b>	<b>\$1,016,857.93</b>	<b>\$2,037,476.96</b>		<b>\$3,054,334.89</b>
300 <u>Purchased Professional and Technical Services</u>				
329 Professional Educational Services – Other	1,120.13	29,139.42		30,259.55
<b>Total Purchased Professional and Technical Services</b>	<b>\$1,120.13</b>	<b>\$29,139.42</b>		<b>\$30,259.55</b>
600 <u>Supplies</u>				
610 General Supplies	8,355.77	11,188.37		19,544.14
<b>Total Supplies</b>	<b>\$8,355.77</b>	<b>\$11,188.37</b>		<b>\$19,544.14</b>
800 <u>Other Objects</u>				
810 Dues and Fees		45.00		45.00
<b>Total Other Objects</b>		<b>\$45.00</b>		<b>\$45.00</b>
<b>Total 2120 Guidance Services</b>	<b>\$2,781,355.00</b>	<b>\$5,333,471.85</b>		<b>\$8,114,826.85</b>

LEA : 122092102      Central Bucks SD

Printed 12/1/2020 8:54:49 AM

General Fund (10)

2130 Attendance Services

	<u>Elementary</u>	<u>Secondary</u>	<u>Federal</u>	<u>Total</u>
<b>100 <u>Personnel Services – Salaries</u></b>				
100 Personnel Services – Salaries				333,734.39
<b>Total Personnel Services – Salaries</b>				<b>\$333,734.39</b>
<b>200 <u>Personnel Services – Employee Benefits</u></b>				
220 Social Security Contributions				24,081.05
230 PSERS Retirement Contributions				112,066.07
250 Unemployment Compensation				159.90
260 Workers' Compensation				5,202.90
270 Group Insurance – Self-Insurance				137,897.76
<b>Total Personnel Services – Employee Benefits</b>				<b>\$279,407.68</b>
<b>Total 2130 Attendance Services</b>				<b>\$613,142.07</b>



LEA : 122092102      Central Bucks SD

Printed 12/1/2020 8:54:49 AM

General Fund (10)				
2140 Psychological Services	<u>Elementary</u>	<u>Secondary</u>	<u>Federal</u>	<u>Total</u>
100 <u>Personnel Services – Salaries</u>				
100 Personnel Services – Salaries	875,585.24	460,866.50		1,336,451.74
<b>Total Personnel Services – Salaries</b>	<b>\$875,585.24</b>	<b>\$460,866.50</b>		<b>\$1,336,451.74</b>
200 <u>Personnel Services – Employee Benefits</u>				
220 Social Security Contributions	63,797.37	33,507.74		97,305.11
230 PSERS Retirement Contributions	299,873.70	158,009.49		457,883.19
250 Unemployment Compensation	161.46	74.10		235.56
260 Workers' Compensation	5,253.66	2,411.10		7,664.76
270 Group Insurance – Self-Insurance	158,077.92	63,903.84		221,981.76
<b>Total Personnel Services – Employee Benefits</b>	<b>\$527,164.11</b>	<b>\$257,906.27</b>		<b>\$785,070.38</b>
300 <u>Purchased Professional and Technical Services</u>				
330 Other Professional Services	4,860.00			4,860.00
<b>Total Purchased Professional and Technical Services</b>	<b>\$4,860.00</b>			<b>\$4,860.00</b>
500 <u>Other Purchased Services</u>				
580 Travel	1,801.41	928.00		2,729.41
<b>Total Other Purchased Services</b>	<b>\$1,801.41</b>	<b>\$928.00</b>		<b>\$2,729.41</b>
600 <u>Supplies</u>				
610 General Supplies	20,227.94	10,420.46		30,648.40
640 Books and Periodicals	1,188.96	612.50		1,801.46
650 Supplies & Fees – Technology Related	4,169.76	2,148.06		6,317.82
<b>Total Supplies</b>	<b>\$25,586.66</b>	<b>\$13,181.02</b>		<b>\$38,767.68</b>
<b>Total 2140 Psychological Services</b>	<b>\$1,434,997.42</b>	<b>\$732,881.79</b>		<b>\$2,167,879.21</b>

LEA : 122092102     Central Bucks SD

Printed 12/1/2020 8:54:49 AM

General Fund (10)

2150 Speech Pathology and Audiology Services	<u>Elementary</u>	<u>Secondary</u>	<u>Federal</u>	<u>Total</u>
<b>100 <u>Personnel Services – Salaries</u></b>				
100 Personnel Services – Salaries	1,201,490.01	268,447.26	41,553.98	1,511,491.25
<b>Total Personnel Services – Salaries</b>	<b>\$1,201,490.01</b>	<b>\$268,447.26</b>	<b>\$41,553.98</b>	<b>\$1,511,491.25</b>
<b>200 <u>Personnel Services – Employee Benefits</u></b>				
220 Social Security Contributions	87,037.48	19,598.98	3,178.93	109,815.39
230 PSERS Retirement Contributions	411,911.57	91,988.31	14,248.86	518,148.74
250 Unemployment Compensation	244.29	66.12		310.41
260 Workers' Compensation	7,951.48	2,149.74		10,101.22
270 Group Insurance – Self-Insurance	255,027.34	53,561.19		308,588.53
<b>Total Personnel Services – Employee Benefits</b>	<b>\$762,172.16</b>	<b>\$167,364.34</b>	<b>\$17,427.79</b>	<b>\$946,964.29</b>
<b>Total 2150 Speech Pathology and Audiology Services</b>	<b>\$1,963,662.17</b>	<b>\$435,811.60</b>	<b>\$58,981.77</b>	<b>\$2,458,455.54</b>

LEA : 122092102      Central Bucks SD

Printed 12/1/2020 8:54:49 AM

General Fund (10)				
2190 Other Student Services	<u>Elementary</u>	<u>Secondary</u>	<u>Federal</u>	<u>Total</u>
100 <u>Personnel Services – Salaries</u>				
100 Personnel Services – Salaries	126,044.89	136,548.63		262,593.52
<b>Total Personnel Services – Salaries</b>	<b>\$126,044.89</b>	<b>\$136,548.63</b>		<b>\$262,593.52</b>
200 <u>Personnel Services – Employee Benefits</u>				
220 Social Security Contributions	9,321.71	10,098.51		19,420.22
230 PSERS Retirement Contributions	43,220.81	46,822.54		90,043.35
250 Unemployment Compensation	28.45	30.83		59.28
260 Workers' Compensation	925.86	1,003.02		1,928.88
270 Group Insurance – Self-Insurance	23,005.39	24,922.49		47,927.88
291 Other Retirement Plans	1,644.70	1,781.76		3,426.46
<b>Total Personnel Services – Employee Benefits</b>	<b>\$78,146.92</b>	<b>\$84,659.15</b>		<b>\$162,806.07</b>
300 <u>Purchased Professional and Technical Services</u>				
330 Other Professional Services	30,686.88	33,244.12		63,931.00
<b>Total Purchased Professional and Technical Services</b>	<b>\$30,686.88</b>	<b>\$33,244.12</b>		<b>\$63,931.00</b>
600 <u>Supplies</u>				
610 General Supplies	2,795.79	3,028.77		5,824.56
630 Food	163.07	176.65		339.72
650 Supplies & Fees – Technology Related	304.31	329.66		633.97
<b>Total Supplies</b>	<b>\$3,263.17</b>	<b>\$3,535.08</b>		<b>\$6,798.25</b>
<b>Total 2190 Other Student Services</b>	<b>\$238,141.86</b>	<b>\$257,986.98</b>		<b>\$496,128.84</b>

LEA : 122092102      Central Bucks SD

Printed 12/1/2020 8:54:49 AM

General Fund (10)

2200 Support Services – Instructional Staff	Elementary	Secondary	Federal	Total
<b>100 Personnel Services – Salaries</b>				
100 Personnel Services – Salaries	3,955,531.19	3,227,348.75	3,208.24	7,186,088.18
<b>Total Personnel Services – Salaries</b>	<b>\$3,955,531.19</b>	<b>\$3,227,348.75</b>	<b>\$3,208.24</b>	<b>\$7,186,088.18</b>
<b>200 Personnel Services – Employee Benefits</b>				
220 Social Security Contributions	291,662.05	237,969.07	245.41	529,876.53
230 PSERS Retirement Contributions	1,350,380.96	1,095,855.89	1,100.10	2,447,336.95
240 Tuition Reimbursement	123,197.83	128,226.31		251,424.14
250 Unemployment Compensation	835.99	630.33		1,466.32
260 Workers' Compensation	27,205.34	20,514.38		47,719.72
270 Group Insurance – Self-Insurance	652,116.25	501,640.23		1,153,756.48
291 Other Retirement Plans	17,062.69	18,070.32		35,133.01
<b>Total Personnel Services – Employee Benefits</b>	<b>\$2,462,461.11</b>	<b>\$2,002,906.53</b>	<b>\$1,345.51</b>	<b>\$4,466,713.15</b>
<b>300 Purchased Professional and Technical Services</b>				
329 Professional Educational Services – Other	14,445.64	6,737.37	11,950.00	33,133.01
330 Other Professional Services			5,563.42	5,563.42
340 Technical Services	13,188.24	13,726.54		26,914.78
360 Employee Training and Development Services	15,493.00	14,419.14		29,912.14
<b>Total Purchased Professional and Technical Services</b>	<b>\$43,126.88</b>	<b>\$34,883.05</b>	<b>\$17,513.42</b>	<b>\$95,523.35</b>
<b>400 Purchased Property Services</b>				
430 Repairs and Maintenance Services	18,339.05	71,100.60		89,439.65
<b>Total Purchased Property Services</b>	<b>\$18,339.05</b>	<b>\$71,100.60</b>		<b>\$89,439.65</b>
<b>500 Other Purchased Services</b>				
530 Communications	36,864.23	38,368.90		75,233.13
580 Travel	10,915.25	11,890.81	18,135.75	40,941.81
<b>Total Other Purchased Services</b>	<b>\$47,779.48</b>	<b>\$50,259.71</b>	<b>\$18,135.75</b>	<b>\$116,174.94</b>
<b>600 Supplies</b>				
610 General Supplies	39,156.02	43,105.54		82,261.56
630 Food	1,492.56	1,636.73		3,129.29
640 Books and Periodicals	38,611.63	41,445.19		80,056.82
650 Supplies & Fees – Technology Related	56,475.84	277,042.28	26,109.27	359,627.39
<b>Total Supplies</b>	<b>\$135,736.05</b>	<b>\$363,229.74</b>	<b>\$26,109.27</b>	<b>\$525,075.06</b>
<b>700 Property</b>				
752 Capital Equipment – Original and Additional	199.00			199.00
762 Capitalized Equipment - Replacement	315.00			315.00
<b>Total Property</b>	<b>\$514.00</b>			<b>\$514.00</b>
<b>800 Other Objects</b>				
810 Dues and Fees	518.81	614.16		1,132.97
<b>Total Other Objects</b>	<b>\$518.81</b>	<b>\$614.16</b>		<b>\$1,132.97</b>
<b>Total 2200 Support Services – Instructional Staff</b>	<b>\$6,664,006.57</b>	<b>\$5,750,342.54</b>	<b>\$66,312.19</b>	<b>\$12,480,661.30</b>

LEA : 122092102      Central Bucks SD

Printed 12/1/2020 8:54:49 AM

General Fund (10)				
2220 Technology Support Services	<u>Elementary</u>	<u>Secondary</u>	<u>Federal</u>	<u>Total</u>
100 <u>Personnel Services – Salaries</u>				
100 Personnel Services – Salaries	67,235.58	85,638.54		152,874.12
<b>Total Personnel Services – Salaries</b>	<b>\$67,235.58</b>	<b>\$85,638.54</b>		<b>\$152,874.12</b>
200 <u>Personnel Services – Employee Benefits</u>				
220 Social Security Contributions	4,717.53	6,069.63		10,787.16
230 PSERS Retirement Contributions	23,055.08	29,365.45		52,420.53
250 Unemployment Compensation	10.67	11.56		22.23
260 Workers' Compensation	347.20	376.13		723.33
270 Group Insurance – Self-Insurance	11,502.60	12,461.15		23,963.75
291 Other Retirement Plans	1,148.44	1,244.14		2,392.58
<b>Total Personnel Services – Employee Benefits</b>	<b>\$40,781.52</b>	<b>\$49,528.06</b>		<b>\$90,309.58</b>
600 <u>Supplies</u>				
610 General Supplies	7,712.07	16,478.32		24,190.39
<b>Total Supplies</b>	<b>\$7,712.07</b>	<b>\$16,478.32</b>		<b>\$24,190.39</b>
<b>Total 2220 Technology Support Services</b>	<b>\$115,729.17</b>	<b>\$151,644.92</b>		<b>\$267,374.09</b>

LEA : 122092102      Central Bucks SD

Printed 12/1/2020 8:54:49 AM

General Fund (10)

2240 Computer-Assisted Instruction Support Services	Elementary	Secondary	Federal	Total
100 <u>Personnel Services – Salaries</u>				
100 Personnel Services – Salaries	648,969.17	681,836.37		1,330,805.54
<b>Total Personnel Services – Salaries</b>	<b>\$648,969.17</b>	<b>\$681,836.37</b>		<b>\$1,330,805.54</b>
200 <u>Personnel Services – Employee Benefits</u>				
220 Social Security Contributions	48,238.76	50,695.63		98,934.39
230 PSERS Retirement Contributions	219,050.28	227,991.10		447,041.38
250 Unemployment Compensation	185.75	211.27		397.02
260 Workers' Compensation	6,043.99	6,874.43		12,918.42
270 Group Insurance – Self-Insurance	135,551.82	141,084.54		276,636.36
291 Other Retirement Plans	2,010.31	2,092.37		4,102.68
<b>Total Personnel Services – Employee Benefits</b>	<b>\$411,080.91</b>	<b>\$428,949.34</b>		<b>\$840,030.25</b>
300 <u>Purchased Professional and Technical Services</u>				
340 Technical Services	7,308.24	7,606.54		14,914.78
<b>Total Purchased Professional and Technical Services</b>	<b>\$7,308.24</b>	<b>\$7,606.54</b>		<b>\$14,914.78</b>
400 <u>Purchased Property Services</u>				
430 Repairs and Maintenance Services	18,056.32	70,806.32		88,862.64
<b>Total Purchased Property Services</b>	<b>\$18,056.32</b>	<b>\$70,806.32</b>		<b>\$88,862.64</b>
500 <u>Other Purchased Services</u>				
530 Communications	36,864.23	38,368.90		75,233.13
580 Travel	7,034.97	7,322.11		14,357.08
<b>Total Other Purchased Services</b>	<b>\$43,899.20</b>	<b>\$45,691.01</b>		<b>\$89,590.21</b>
600 <u>Supplies</u>				
610 General Supplies	11,007.76	7,571.98		18,579.74
650 Supplies & Fees – Technology Related	56,475.84	253,799.72		310,275.56
<b>Total Supplies</b>	<b>\$67,483.60</b>	<b>\$261,371.70</b>		<b>\$328,855.30</b>
700 <u>Property</u>				
752 Capital Equipment – Original and Additional	199.00			199.00
762 Capitalized Equipment - Replacement	315.00			315.00
<b>Total Property</b>	<b>\$514.00</b>			<b>\$514.00</b>
<b>Total 2240 Computer-Assisted Instruction Support Services</b>	<b>\$1,197,311.44</b>	<b>\$1,496,261.28</b>		<b>\$2,693,572.72</b>

LEA : 122092102      Central Bucks SD

Printed 12/1/2020 8:54:49 AM

General Fund (10)				
2250 School Library Services				
	<u>Elementary</u>	<u>Secondary</u>	<u>Federal</u>	<u>Total</u>
100 <u>Personnel Services – Salaries</u>				
100 Personnel Services – Salaries	1,784,333.51	846,660.81		2,630,994.32
<b>Total Personnel Services – Salaries</b>	<b>\$1,784,333.51</b>	<b>\$846,660.81</b>		<b>\$2,630,994.32</b>
200 <u>Personnel Services – Employee Benefits</u>				
220 Social Security Contributions	131,797.61	62,594.37		194,391.98
230 PSERS Retirement Contributions	611,429.67	286,981.59		898,411.26
250 Unemployment Compensation	436.64	193.44		630.08
260 Workers' Compensation	14,207.73	6,294.24		20,501.97
270 Group Insurance – Self-Insurance	311,218.36	142,942.80		454,161.16
<b>Total Personnel Services – Employee Benefits</b>	<b>\$1,069,090.01</b>	<b>\$499,006.44</b>		<b>\$1,568,096.45</b>
600 <u>Supplies</u>				
610 General Supplies	3,148.06	15,202.31		18,350.37
640 Books and Periodicals	38,315.62	41,137.10		79,452.72
650 Supplies & Fees – Technology Related		19,469.56		19,469.56
<b>Total Supplies</b>	<b>\$41,463.68</b>	<b>\$75,808.97</b>		<b>\$117,272.65</b>
800 <u>Other Objects</u>				
810 Dues and Fees		295.00		295.00
<b>Total Other Objects</b>		<b>\$295.00</b>		<b>\$295.00</b>
<b>Total 2250 School Library Services</b>	<b>\$2,894,887.20</b>	<b>\$1,421,771.22</b>		<b>\$4,316,658.42</b>

LEA : 122092102      Central Bucks SD

Printed 12/1/2020 8:54:49 AM

General Fund (10)

2260 Instruction and Curriculum Development Services	Elementary	Secondary	Federal	Total
<b>100 <u>Personnel Services – Salaries</u></b>				
100 Personnel Services – Salaries	648,034.45	771,068.76	3,208.24	1,422,311.45
<b>Total Personnel Services – Salaries</b>	<b>\$648,034.45</b>	<b>\$771,068.76</b>	<b>\$3,208.24</b>	<b>\$1,422,311.45</b>
<b>200 <u>Personnel Services – Employee Benefits</u></b>				
220 Social Security Contributions	47,122.06	56,211.26	245.41	103,578.73
230 PSERS Retirement Contributions	220,528.57	263,151.05	1,100.10	484,779.72
250 Unemployment Compensation	91.32	97.91		189.23
260 Workers' Compensation	2,975.05	3,189.99		6,165.04
270 Group Insurance – Self-Insurance	97,020.74	104,377.07		201,397.81
291 Other Retirement Plans	6,170.69	6,684.91		12,855.60
<b>Total Personnel Services – Employee Benefits</b>	<b>\$373,908.43</b>	<b>\$433,712.19</b>	<b>\$1,345.51</b>	<b>\$808,966.13</b>
<b>300 <u>Purchased Professional and Technical Services</u></b>				
329 Professional Educational Services – Other	14,370.64	6,737.37		21,108.01
330 Other Professional Services			5,563.42	5,563.42
<b>Total Purchased Professional and Technical Services</b>	<b>\$14,370.64</b>	<b>\$6,737.37</b>	<b>\$5,563.42</b>	<b>\$26,671.43</b>
<b>500 <u>Other Purchased Services</u></b>				
580 Travel	1,281.93	2,040.55	382.84	3,705.32
<b>Total Other Purchased Services</b>	<b>\$1,281.93</b>	<b>\$2,040.55</b>	<b>\$382.84</b>	<b>\$3,705.32</b>
<b>600 <u>Supplies</u></b>				
610 General Supplies	15,886.42	2,394.00		18,280.42
630 Food	69.90	156.00		225.90
650 Supplies & Fees – Technology Related		3,773.00	26,109.27	29,882.27
<b>Total Supplies</b>	<b>\$15,956.32</b>	<b>\$6,323.00</b>	<b>\$26,109.27</b>	<b>\$48,388.59</b>
<b>800 <u>Other Objects</u></b>				
810 Dues and Fees	412.00	208.00		620.00
<b>Total Other Objects</b>	<b>\$412.00</b>	<b>\$208.00</b>		<b>\$620.00</b>
<b>Total 2260 Instruction and Curriculum Development Services</b>	<b>\$1,053,963.77</b>	<b>\$1,220,089.87</b>	<b>\$36,609.28</b>	<b>\$2,310,662.92</b>



LEA : 122092102      Central Bucks SD

Printed 12/1/2020 8:54:49 AM

General Fund (10)

2270 Instructional Staff Professional Development Services	Elementary	Secondary	Federal	Total
100 <u>Personnel Services – Salaries</u>				
100 Personnel Services – Salaries	366,436.25	383,641.53		750,077.78
<b>Total Personnel Services – Salaries</b>	<b>\$366,436.25</b>	<b>\$383,641.53</b>		<b>\$750,077.78</b>
200 <u>Personnel Services – Employee Benefits</u>				
220 Social Security Contributions	27,150.67	28,430.70		55,581.37
230 PSERS Retirement Contributions	125,262.28	131,146.10		256,408.38
240 Tuition Reimbursement	123,197.83	128,226.31		251,424.14
250 Unemployment Compensation	46.25	48.13		94.38
260 Workers' Compensation	1,504.78	1,566.20		3,070.98
270 Group Insurance – Self-Insurance	26,368.75	27,445.01		53,813.76
<b>Total Personnel Services – Employee Benefits</b>	<b>\$303,530.56</b>	<b>\$316,862.45</b>		<b>\$620,393.01</b>
300 <u>Purchased Professional and Technical Services</u>				
329 Professional Educational Services – Other	75.00		11,950.00	12,025.00
340 Technical Services	5,880.00	6,120.00		12,000.00
360 Employee Training and Development Services	15,493.00	14,419.14		29,912.14
<b>Total Purchased Professional and Technical Services</b>	<b>\$21,448.00</b>	<b>\$20,539.14</b>	<b>\$11,950.00</b>	<b>\$53,937.14</b>
400 <u>Purchased Property Services</u>				
430 Repairs and Maintenance Services	282.73	294.28		577.01
<b>Total Purchased Property Services</b>	<b>\$282.73</b>	<b>\$294.28</b>		<b>\$577.01</b>
500 <u>Other Purchased Services</u>				
580 Travel	2,598.35	2,528.15	17,752.91	22,879.41
<b>Total Other Purchased Services</b>	<b>\$2,598.35</b>	<b>\$2,528.15</b>	<b>\$17,752.91</b>	<b>\$22,879.41</b>
600 <u>Supplies</u>				
610 General Supplies	1,401.71	1,458.93		2,860.64
630 Food	1,422.66	1,480.73		2,903.39
640 Books and Periodicals	296.01	308.09		604.10
<b>Total Supplies</b>	<b>\$3,120.38</b>	<b>\$3,247.75</b>		<b>\$6,368.13</b>
800 <u>Other Objects</u>				
810 Dues and Fees	106.81	111.16		217.97
<b>Total Other Objects</b>	<b>\$106.81</b>	<b>\$111.16</b>		<b>\$217.97</b>
<b>Total 2270 Instructional Staff Professional Development Services</b>	<b>\$697,523.08</b>	<b>\$727,224.46</b>	<b>\$29,702.91</b>	<b>\$1,454,450.45</b>

LEA : 122092102      Central Bucks SD

Printed 12/1/2020 8:54:49 AM

General Fund (10)				
2290 Other Instructional Staff Services	<u>Elementary</u>	<u>Secondary</u>	<u>Federal</u>	<u>Total</u>
100 <u>Personnel Services – Salaries</u>				
100 Personnel Services – Salaries	440,522.23	458,502.74		899,024.97
<b>Total Personnel Services – Salaries</b>	<b>\$440,522.23</b>	<b>\$458,502.74</b>		<b>\$899,024.97</b>
200 <u>Personnel Services – Employee Benefits</u>				
220 Social Security Contributions	32,635.42	33,967.48		66,602.90
230 PSERS Retirement Contributions	151,055.08	157,220.60		308,275.68
250 Unemployment Compensation	65.36	68.02		133.38
260 Workers' Compensation	2,126.59	2,213.39		4,339.98
270 Group Insurance – Self-Insurance	70,453.98	73,329.66		143,783.64
291 Other Retirement Plans	7,733.25	8,048.90		15,782.15
<b>Total Personnel Services – Employee Benefits</b>	<b>\$264,069.68</b>	<b>\$274,848.05</b>		<b>\$538,917.73</b>
<b>Total 2290 Other Instructional Staff Services</b>	<b>\$704,591.91</b>	<b>\$733,350.79</b>		<b>\$1,437,942.70</b>

LEA : 122092102      Central Bucks SD

Printed 12/1/2020 8:54:49 AM

<b>General Fund (10)</b>				
<b>2300 Support Services – Administration</b>	<b><u>Elementary</u></b>	<b><u>Secondary</u></b>	<b><u>Federal</u></b>	<b><u>Total</u></b>
<b>100 <u>Personnel Services – Salaries</u></b>				
100 Personnel Services – Salaries	3,710,300.36	3,705,667.07		8,660,858.19
<b>Total Personnel Services – Salaries</b>	<b>\$3,710,300.36</b>	<b>\$3,705,667.07</b>		<b>\$8,660,858.19</b>
<b>200 <u>Personnel Services – Employee Benefits</u></b>				
220 Social Security Contributions	263,694.77	263,291.00		609,634.57
230 PSERS Retirement Contributions	1,263,078.07	1,271,251.78		2,901,728.98
250 Unemployment Compensation	611.52	564.72		1,307.28
260 Workers' Compensation	19,897.92	18,375.12		42,536.88
270 Group Insurance – Self-Insurance	582,860.12	566,884.16		1,230,442.53
291 Other Retirement Plans	54,342.84	60,856.70		139,779.31
<b>Total Personnel Services – Employee Benefits</b>	<b>\$2,184,485.24</b>	<b>\$2,181,223.48</b>		<b>\$4,925,429.55</b>
<b>300 <u>Purchased Professional and Technical Services</u></b>				
310 Official / Administrative Services				717,773.79
330 Other Professional Services		1,145.70		388,919.05
340 Technical Services				267.00
<b>Total Purchased Professional and Technical Services</b>		<b>\$1,145.70</b>		<b>\$1,106,959.84</b>
<b>400 <u>Purchased Property Services</u></b>				
430 Repairs and Maintenance Services				3,234.07
440 Rentals				12,017.52
<b>Total Purchased Property Services</b>				<b>\$15,251.59</b>
<b>500 <u>Other Purchased Services</u></b>				
520 Insurance – General				202,230.00
530 Communications	2,619.51	7,311.15		41,950.05
549 Other Advertising/Public Relations				1,893.08
580 Travel	1,492.12	6,564.31		56,039.83
<b>Total Other Purchased Services</b>	<b>\$4,111.63</b>	<b>\$13,875.46</b>		<b>\$302,112.96</b>
<b>600 <u>Supplies</u></b>				
610 General Supplies	26,022.33	137,801.64		211,425.34
630 Food	2,054.21	9,436.89		48,079.26
640 Books and Periodicals		286.60		1,854.04
650 Supplies & Fees – Technology Related				2,265.00
<b>Total Supplies</b>	<b>\$28,076.54</b>	<b>\$147,525.13</b>		<b>\$263,623.64</b>
<b>700 <u>Property</u></b>				
752 Capital Equipment – Original and Additional	6,380.00			6,380.00
<b>Total Property</b>	<b>\$6,380.00</b>			<b>\$6,380.00</b>
<b>800 <u>Other Objects</u></b>				
810 Dues and Fees	9,762.30	19,145.31		53,800.40
<b>Total Other Objects</b>	<b>\$9,762.30</b>	<b>\$19,145.31</b>		<b>\$53,800.40</b>
<b>Total 2300 Support Services – Administration</b>	<b>\$5,943,116.07</b>	<b>\$6,068,582.15</b>		<b>\$15,334,416.17</b>

LEA : 122092102    Central Bucks SD

Printed 12/1/2020 8:54:49 AM

General Fund (10)

2310 Board Services	<u>Elementary</u>	<u>Secondary</u>	<u>Federal</u>	<u>Total</u>
500 <u>Other Purchased Services</u>				
520 Insurance – General				202,230.00
549 Other Advertising/Public Relations				798.36
Total Other Purchased Services				\$203,028.36
800 <u>Other Objects</u>				
810 Dues and Fees				17,199.57
Total Other Objects				\$17,199.57
Total 2310 Board Services				\$220,227.93

LEA : 122092102      Central Bucks SD

Printed 12/1/2020 8:54:49 AM

General Fund (10)

2330 Tax Assessment and Collection Services	<u>Elementary</u>	<u>Secondary</u>	<u>Federal</u>	<u>Total</u>
100 <u>Personnel Services – Salaries</u>				
100 Personnel Services – Salaries				161,427.00
Total Personnel Services – Salaries				\$161,427.00
200 <u>Personnel Services – Employee Benefits</u>				
220 Social Security Contributions				12,349.18
Total Personnel Services – Employee Benefits				\$12,349.18
300 <u>Purchased Professional and Technical Services</u>				
310 Official / Administrative Services				717,388.79
Total Purchased Professional and Technical Services				\$717,388.79
500 <u>Other Purchased Services</u>				
530 Communications				6,233.05
Total Other Purchased Services				\$6,233.05
Total 2330 Tax Assessment and Collection Services				\$897,398.02

LEA : 122092102      Central Bucks SD

Printed 12/1/2020 8:54:49 AM

General Fund (10)				
2340 Staff Relations and Negotiations Services	<u>Elementary</u>	<u>Secondary</u>	<u>Federal</u>	<u>Total</u>
300 <u>Purchased Professional and Technical Services</u>				
330 Other Professional Services				110,300.71
Total Purchased Professional and Technical Services				\$110,300.71
500 <u>Other Purchased Services</u>				
549 Other Advertising/Public Relations				734.00
Total Other Purchased Services				\$734.00
600 <u>Supplies</u>				
610 General Supplies				656.73
Total Supplies				\$656.73
Total 2340 Staff Relations and Negotiations Services				\$111,691.44

LEA : 122092102     Central Bucks SD

Printed 12/1/2020 8:54:49 AM

General Fund (10)

2350 Legal and Accounting Services	<u>Elementary</u>	<u>Secondary</u>	<u>Federal</u>	<u>Total</u>
300 <u>Purchased Professional and Technical Services</u>				
330 Other Professional Services				206,788.64
<b>Total Purchased Professional and Technical Services</b>				<b>\$206,788.64</b>
<b>Total 2350 Legal and Accounting Services</b>				<b>\$206,788.64</b>

LEA : 122092102      Central Bucks SD

Printed 12/1/2020 8:54:49 AM

General Fund (10)				
2360 Office of the Superintendent / Executive Director Services	<u>Elementary</u>	<u>Secondary</u>	<u>Federal</u>	<u>Total</u>
100 <u>Personnel Services – Salaries</u>				
100 Personnel Services – Salaries				969,640.08
<b>Total Personnel Services – Salaries</b>				<b>\$969,640.08</b>
200 <u>Personnel Services – Employee Benefits</u>				
220 Social Security Contributions				61,789.69
230 PSERS Retirement Contributions				330,844.30
250 Unemployment Compensation				103.74
260 Workers' Compensation				3,375.54
270 Group Insurance – Self-Insurance				64,722.29
291 Other Retirement Plans				22,443.71
<b>Total Personnel Services – Employee Benefits</b>				<b>\$483,279.27</b>
500 <u>Other Purchased Services</u>				
530 Communications	17.96			17.96
580 Travel				41,314.34
<b>Total Other Purchased Services</b>	<b>\$17.96</b>			<b>\$41,332.30</b>
600 <u>Supplies</u>				
610 General Supplies				2,739.35
630 Food				26,793.27
640 Books and Periodicals				1,531.44
<b>Total Supplies</b>				<b>\$31,064.06</b>
800 <u>Other Objects</u>				
810 Dues and Fees				1,971.22
<b>Total Other Objects</b>				<b>\$1,971.22</b>
<b>Total 2360 Office of the Superintendent / Executive Director Services</b>	<b>\$17.96</b>			<b>\$1,527,286.93</b>



LEA : 122092102      Central Bucks SD

Printed 12/1/2020 8:54:49 AM

General Fund (10)

2370 Community Relations Services

	<u>Elementary</u>	<u>Secondary</u>	<u>Federal</u>	<u>Total</u>
<b>100 <u>Personnel Services – Salaries</u></b>				
100 Personnel Services – Salaries				106,605.00
<b>Total Personnel Services – Salaries</b>				<b>\$106,605.00</b>
<b>200 <u>Personnel Services – Employee Benefits</u></b>				
220 Social Security Contributions				7,957.71
230 PSERS Retirement Contributions				36,554.83
250 Unemployment Compensation				14.82
260 Workers' Compensation				482.22
270 Group Insurance – Self-Insurance				15,975.96
291 Other Retirement Plans				2,136.06
<b>Total Personnel Services – Employee Benefits</b>				<b>\$63,121.60</b>
<b>300 <u>Purchased Professional and Technical Services</u></b>				
330 Other Professional Services				2,100.00
340 Technical Services				267.00
<b>Total Purchased Professional and Technical Services</b>				<b>\$2,367.00</b>
<b>400 <u>Purchased Property Services</u></b>				
430 Repairs and Maintenance Services				1,664.31
<b>Total Purchased Property Services</b>				<b>\$1,664.31</b>
<b>500 <u>Other Purchased Services</u></b>				
580 Travel				1,371.34
<b>Total Other Purchased Services</b>				<b>\$1,371.34</b>
<b>600 <u>Supplies</u></b>				
610 General Supplies				34,421.99
650 Supplies & Fees – Technology Related				2,265.00
<b>Total Supplies</b>				<b>\$36,686.99</b>
<b>800 <u>Other Objects</u></b>				
810 Dues and Fees				805.00
<b>Total Other Objects</b>				<b>\$805.00</b>
<b>Total 2370 Community Relations Services</b>				<b>\$212,621.24</b>

LEA : 122092102      Central Bucks SD

Printed 12/1/2020 8:54:49 AM

General Fund (10)				
2380 Office of the Principal Services	<u>Elementary</u>	<u>Secondary</u>	<u>Federal</u>	<u>Total</u>
100 <u>Personnel Services – Salaries</u>				
100 Personnel Services – Salaries	3,710,300.36	3,705,667.07		7,415,967.43
<b>Total Personnel Services – Salaries</b>	<b>\$3,710,300.36</b>	<b>\$3,705,667.07</b>		<b>\$7,415,967.43</b>
200 <u>Personnel Services – Employee Benefits</u>				
220 Social Security Contributions	263,694.77	263,291.00		526,985.77
230 PSERS Retirement Contributions	1,263,078.07	1,271,251.78		2,534,329.85
250 Unemployment Compensation	611.52	564.72		1,176.24
260 Workers' Compensation	19,897.92	18,375.12		38,273.04
270 Group Insurance – Self-Insurance	582,860.12	566,884.16		1,149,744.28
291 Other Retirement Plans	54,342.84	60,856.70		115,199.54
<b>Total Personnel Services – Employee Benefits</b>	<b>\$2,184,485.24</b>	<b>\$2,181,223.48</b>		<b>\$4,365,708.72</b>
300 <u>Purchased Professional and Technical Services</u>				
330 Other Professional Services		1,145.70		1,145.70
<b>Total Purchased Professional and Technical Services</b>		<b>\$1,145.70</b>		<b>\$1,145.70</b>
500 <u>Other Purchased Services</u>				
530 Communications	2,601.55	7,311.15		9,912.70
580 Travel	1,492.12	6,564.31		8,056.43
<b>Total Other Purchased Services</b>	<b>\$4,093.67</b>	<b>\$13,875.46</b>		<b>\$17,969.13</b>
600 <u>Supplies</u>				
610 General Supplies	26,022.33	137,801.64		163,823.97
630 Food	2,054.21	9,436.89		11,491.10
640 Books and Periodicals		286.60		286.60
<b>Total Supplies</b>	<b>\$28,076.54</b>	<b>\$147,525.13</b>		<b>\$175,601.67</b>
700 <u>Property</u>				
752 Capital Equipment – Original and Additional	6,380.00			6,380.00
<b>Total Property</b>	<b>\$6,380.00</b>			<b>\$6,380.00</b>
800 <u>Other Objects</u>				
810 Dues and Fees	9,762.30	19,145.31		28,907.61
<b>Total Other Objects</b>	<b>\$9,762.30</b>	<b>\$19,145.31</b>		<b>\$28,907.61</b>
<b>Total 2380 Office of the Principal Services</b>	<b>\$5,943,098.11</b>	<b>\$6,068,582.15</b>		<b>\$12,011,680.26</b>

LEA : 122092102      Central Bucks SD

Printed 12/1/2020 8:54:49 AM

General Fund (10)				
2390 Other Administration Services	<u>Elementary</u>	<u>Secondary</u>	<u>Federal</u>	<u>Total</u>
100 <u>Personnel Services – Salaries</u>				
100 Personnel Services – Salaries				7,218.68
Total Personnel Services – Salaries				\$7,218.68
200 <u>Personnel Services – Employee Benefits</u>				
220 Social Security Contributions				552.22
250 Unemployment Compensation				12.48
260 Workers’ Compensation				406.08
Total Personnel Services – Employee Benefits				\$970.78
300 <u>Purchased Professional and Technical Services</u>				
310 Official / Administrative Services				385.00
330 Other Professional Services				68,584.00
Total Purchased Professional and Technical Services				\$68,969.00
400 <u>Purchased Property Services</u>				
430 Repairs and Maintenance Services				1,569.76
440 Rentals				12,017.52
Total Purchased Property Services				\$13,587.28
500 <u>Other Purchased Services</u>				
530 Communications				25,786.34
549 Other Advertising/Public Relations				360.72
580 Travel				5,297.72
Total Other Purchased Services				\$31,444.78
600 <u>Supplies</u>				
610 General Supplies				9,783.30
630 Food				9,794.89
640 Books and Periodicals				36.00
Total Supplies				\$19,614.19
800 <u>Other Objects</u>				
810 Dues and Fees				4,917.00
Total Other Objects				\$4,917.00
Total 2390 Other Administration Services				\$146,721.71

LEA : 122092102      Central Bucks SD

Printed 12/1/2020 8:54:49 AM

General Fund (10)				
2400 Support Services – Pupil Health	<u>Elementary</u>	<u>Secondary</u>	<u>Federal</u>	<u>Total</u>
100 <u>Personnel Services – Salaries</u>				
100 Personnel Services – Salaries			26,506.47	2,560,504.02
Total Personnel Services – Salaries			\$26,506.47	\$2,560,504.02
200 <u>Personnel Services – Employee Benefits</u>				
220 Social Security Contributions			2,027.73	185,346.74
230 PSERS Retirement Contributions			7,800.94	871,496.17
250 Unemployment Compensation				800.31
260 Workers' Compensation				26,040.00
270 Group Insurance – Self-Insurance				544,233.76
Total Personnel Services – Employee Benefits			\$9,828.67	\$1,627,916.98
300 <u>Purchased Professional and Technical Services</u>				
329 Professional Educational Services – Other				140.00
330 Other Professional Services				58,323.06
Total Purchased Professional and Technical Services				\$58,463.06
500 <u>Other Purchased Services</u>				
580 Travel				195.37
Total Other Purchased Services				\$195.37
600 <u>Supplies</u>				
610 General Supplies				51,838.15
640 Books and Periodicals				56.71
Total Supplies				\$51,894.86
700 <u>Property</u>				
752 Capital Equipment – Original and Additional				7,800.00
Total Property				\$7,800.00
800 <u>Other Objects</u>				
810 Dues and Fees				1,234.00
Total Other Objects				\$1,234.00
Total 2400 Support Services – Pupil Health			\$36,335.14	\$4,308,008.29

LEA : 122092102      Central Bucks SD

Printed 12/1/2020 8:54:49 AM

General Fund (10)				
2440 Nursing Services				
	<u>Elementary</u>	<u>Secondary</u>	<u>Federal</u>	<u>Total</u>
100 <u>Personnel Services – Salaries</u>				
100 Personnel Services – Salaries			26,506.47	2,506,802.01
Total Personnel Services – Salaries			\$26,506.47	\$2,506,802.01
200 <u>Personnel Services – Employee Benefits</u>				
220 Social Security Contributions			2,027.73	181,486.45
230 PSERS Retirement Contributions			7,800.94	853,081.87
250 Unemployment Compensation				786.67
260 Workers' Compensation				25,604.42
270 Group Insurance – Self-Insurance				536,204.02
Total Personnel Services – Employee Benefits			\$9,828.67	\$1,597,163.43
300 <u>Purchased Professional and Technical Services</u>				
329 Professional Educational Services – Other				140.00
330 Other Professional Services				58,323.06
Total Purchased Professional and Technical Services				\$58,463.06
500 <u>Other Purchased Services</u>				
580 Travel				195.37
Total Other Purchased Services				\$195.37
600 <u>Supplies</u>				
610 General Supplies				51,838.15
640 Books and Periodicals				56.71
Total Supplies				\$51,894.86
700 <u>Property</u>				
752 Capital Equipment – Original and Additional				7,800.00
Total Property				\$7,800.00
800 <u>Other Objects</u>				
810 Dues and Fees				1,234.00
Total Other Objects				\$1,234.00
Total 2440 Nursing Services			\$36,335.14	\$4,223,552.73

LEA : 122092102     Central Bucks SD

Printed 12/1/2020 8:54:49 AM

General Fund (10)

2450 Nonpublic Health Services	<u>Elementary</u>	<u>Secondary</u>	<u>Federal</u>	<u>Total</u>
100 <u>Personnel Services – Salaries</u>				
100 Personnel Services – Salaries				53,702.01
Total Personnel Services – Salaries				\$53,702.01
200 <u>Personnel Services – Employee Benefits</u>				
220 Social Security Contributions				3,860.29
230 PSERS Retirement Contributions				18,414.30
250 Unemployment Compensation				13.64
260 Workers' Compensation				435.58
270 Group Insurance – Self-Insurance				8,029.74
Total Personnel Services – Employee Benefits				\$30,753.55
Total 2450 Nonpublic Health Services				\$84,455.56

LEA : 122092102      Central Bucks SD

Printed 12/1/2020 8:54:49 AM

General Fund (10)				
2500 Support Services – Business	Elementary	Secondary	Federal	Total
<b>100 Personnel Services – Salaries</b>				
100 Personnel Services – Salaries				968,193.71
<b>Total Personnel Services – Salaries</b>				<b>\$968,193.71</b>
<b>200 Personnel Services – Employee Benefits</b>				
220 Social Security Contributions				72,932.79
230 PSERS Retirement Contributions				330,880.90
250 Unemployment Compensation				175.94
260 Workers' Compensation				5,725.70
270 Group Insurance – Self-Insurance				157,579.29
291 Other Retirement Plans				12,400.80
<b>Total Personnel Services – Employee Benefits</b>				<b>\$579,695.42</b>
<b>300 Purchased Professional and Technical Services</b>				
330 Other Professional Services				39,123.80
<b>Total Purchased Professional and Technical Services</b>				<b>\$39,123.80</b>
<b>400 Purchased Property Services</b>				
430 Repairs and Maintenance Services				8,968.13
<b>Total Purchased Property Services</b>				<b>\$8,968.13</b>
<b>500 Other Purchased Services</b>				
530 Communications				2,195.76
549 Other Advertising/Public Relations				8,807.55
580 Travel				1,911.17
<b>Total Other Purchased Services</b>				<b>\$12,914.48</b>
<b>600 Supplies</b>				
610 General Supplies				36,724.32
630 Food				8,333.62
<b>Total Supplies</b>				<b>\$45,057.94</b>
<b>800 Other Objects</b>				
810 Dues and Fees				1,909.98
<b>Total Other Objects</b>				<b>\$1,909.98</b>
<b>Total 2500 Support Services – Business</b>				<b>\$1,655,863.46</b>

LEA : 122092102      Central Bucks SD

Printed 12/1/2020 8:54:49 AM

General Fund (10)				
2510 Fiscal Services	<u>Elementary</u>	<u>Secondary</u>	<u>Federal</u>	<u>Total</u>
100 <u>Personnel Services – Salaries</u>				
100 Personnel Services – Salaries				968,193.71
Total Personnel Services – Salaries				\$968,193.71
200 <u>Personnel Services – Employee Benefits</u>				
220 Social Security Contributions				72,932.79
230 PSERS Retirement Contributions				330,880.90
250 Unemployment Compensation				175.94
260 Workers' Compensation				5,725.70
270 Group Insurance – Self-Insurance				157,579.29
291 Other Retirement Plans				12,400.80
Total Personnel Services – Employee Benefits				\$579,695.42
300 <u>Purchased Professional and Technical Services</u>				
330 Other Professional Services				39,123.80
Total Purchased Professional and Technical Services				\$39,123.80
400 <u>Purchased Property Services</u>				
430 Repairs and Maintenance Services				8,968.13
Total Purchased Property Services				\$8,968.13
500 <u>Other Purchased Services</u>				
530 Communications				2,195.76
549 Other Advertising/Public Relations				8,807.55
580 Travel				1,911.17
Total Other Purchased Services				\$12,914.48
600 <u>Supplies</u>				
610 General Supplies				36,724.32
630 Food				8,333.62
Total Supplies				\$45,057.94
800 <u>Other Objects</u>				
810 Dues and Fees				1,909.98
Total Other Objects				\$1,909.98
Total 2510 Fiscal Services				\$1,655,863.46



LEA : 122092102     Central Bucks SD

Printed 12/1/2020 8:54:49 AM

General Fund (10)

2511 Supervision of Fiscal Services - Head of Component	<u>Elementary</u>	<u>Secondary</u>	<u>Federal</u>	<u>Total</u>
100 <u>Personnel Services – Salaries</u>				
100 Personnel Services – Salaries				173,244.25
Total Personnel Services – Salaries				\$173,244.25
200 <u>Personnel Services – Employee Benefits</u>				
220 Social Security Contributions				14,107.38
230 PSERS Retirement Contributions				58,292.91
250 Unemployment Compensation				14.82
260 Workers' Compensation				482.22
270 Group Insurance – Self-Insurance				15,975.96
291 Other Retirement Plans				4,772.80
Total Personnel Services – Employee Benefits				\$93,646.09
Total 2511 Supervision of Fiscal Services - Head of Component				\$266,890.34

LEA : 122092102      Central Bucks SD

Printed 12/1/2020 8:54:49 AM

General Fund (10)				
2515 Financial Accounting Services	<u>Elementary</u>	<u>Secondary</u>	<u>Federal</u>	<u>Total</u>
100 <u>Personnel Services – Salaries</u>				
100 Personnel Services – Salaries				794,949.46
Total Personnel Services – Salaries				\$794,949.46
200 <u>Personnel Services – Employee Benefits</u>				
220 Social Security Contributions				58,825.41
230 PSERS Retirement Contributions				272,587.99
250 Unemployment Compensation				161.12
260 Workers' Compensation				5,243.48
270 Group Insurance – Self-Insurance				141,603.33
291 Other Retirement Plans				7,628.00
Total Personnel Services – Employee Benefits				\$486,049.33
300 <u>Purchased Professional and Technical Services</u>				
330 Other Professional Services				39,123.80
Total Purchased Professional and Technical Services				\$39,123.80
400 <u>Purchased Property Services</u>				
430 Repairs and Maintenance Services				8,968.13
Total Purchased Property Services				\$8,968.13
500 <u>Other Purchased Services</u>				
530 Communications				2,195.76
549 Other Advertising/Public Relations				8,807.55
580 Travel				1,911.17
Total Other Purchased Services				\$12,914.48
600 <u>Supplies</u>				
610 General Supplies				36,724.32
630 Food				8,333.62
Total Supplies				\$45,057.94
800 <u>Other Objects</u>				
810 Dues and Fees				1,909.98
Total Other Objects				\$1,909.98
Total 2515 Financial Accounting Services				\$1,388,973.12

LEA : 122092102      Central Bucks SD

Printed 12/1/2020 8:54:49 AM

General Fund (10)				
2600 Operation and Maintenance of Plant Services	<u>Elementary</u>	<u>Secondary</u>	<u>Federal</u>	<u>Total</u>
100 <u>Personnel Services – Salaries</u>				
100 Personnel Services – Salaries				10,243,125.70
Total Personnel Services – Salaries				\$10,243,125.70
200 <u>Personnel Services – Employee Benefits</u>				
220 Social Security Contributions				784,256.02
230 PSERS Retirement Contributions				3,581,849.09
250 Unemployment Compensation				82,764.30
260 Workers' Compensation				70,061.81
270 Group Insurance – Self-Insurance				2,922,664.37
291 Other Retirement Plans				10,868.14
Total Personnel Services – Employee Benefits				\$7,452,463.73
300 <u>Purchased Professional and Technical Services</u>				
330 Other Professional Services				33,900.78
340 Technical Services				133,369.00
Total Purchased Professional and Technical Services				\$167,269.78
400 <u>Purchased Property Services</u>				
410 Cleaning Services				358,461.16
420 Utility Services				320,271.41
430 Repairs and Maintenance Services				1,319,665.00
440 Rentals				68,869.67
460 Extermination Services				22,177.00
490 Other Purchased Property Services				502,214.77
Total Purchased Property Services				\$2,591,659.01
500 <u>Other Purchased Services</u>				
521 Fire Insurance				562,911.00
523 General Property and Liability Insurance				81,465.00
529 Other Insurance				57,370.00
580 Travel				19,695.82
Total Other Purchased Services				\$721,441.82
600 <u>Supplies</u>				
610 General Supplies	903,178.23	895,897.09		1,799,075.32
620 Energy				3,174,087.37
630 Food				1,667.98
650 Supplies & Fees – Technology Related				32,273.68
Total Supplies				\$5,007,104.35
700 <u>Property</u>				
752 Capital Equipment – Original and Additional				73,019.03
762 Capitalized Equipment - Replacement				127,707.03
Total Property				\$200,726.06
800 <u>Other Objects</u>				
810 Dues and Fees				4,275.83

LEA : 122092102     Central Bucks SD

Printed 12/1/2020 8:54:49 AM

General Fund (10)

2600 Operation and Maintenance of Plant Services	<u>Elementary</u>	<u>Secondary</u>	<u>Federal</u>	<u>Total</u>
Total Other Objects				\$4,275.83
Total 2600 Operation and Maintenance of Plant Services	\$903,178.23	\$895,897.09		\$26,388,066.28

LEA : 122092102      Central Bucks SD

Printed 12/1/2020 8:54:49 AM

General Fund (10)

2610 Supervision of Operation and Maintenance of Plant Services	<u>Elementary</u>	<u>Secondary</u>	<u>Federal</u>	<u>Total</u>
100 <u>Personnel Services – Salaries</u>				
100 Personnel Services – Salaries				151,421.00
<b>Total Personnel Services – Salaries</b>				<b>\$151,421.00</b>
200 <u>Personnel Services – Employee Benefits</u>				
220 Social Security Contributions				10,644.79
230 PSERS Retirement Contributions				51,922.30
250 Unemployment Compensation				14.82
260 Workers' Compensation				482.22
291 Other Retirement Plans				3,037.44
<b>Total Personnel Services – Employee Benefits</b>				<b>\$66,101.57</b>
<b>Total 2610 Supervision of Operation and Maintenance of Plant Services</b>				<b>\$217,522.57</b>

LEA : 122092102      Central Bucks SD

Printed 12/1/2020 8:54:49 AM

General Fund (10)

2611 Supervision of Operation and Maintenance of Plant Services – Head of Component	<u>Elementary</u>	<u>Secondary</u>	<u>Federal</u>	<u>Total</u>
100 <u>Personnel Services – Salaries</u>				
100 Personnel Services – Salaries				151,421.00
<b>Total Personnel Services – Salaries</b>				<b>\$151,421.00</b>
200 <u>Personnel Services – Employee Benefits</u>				
220 Social Security Contributions				10,644.79
230 PSERS Retirement Contributions				51,922.30
250 Unemployment Compensation				14.82
260 Workers' Compensation				482.22
291 Other Retirement Plans				3,037.44
<b>Total Personnel Services – Employee Benefits</b>				<b>\$66,101.57</b>
<b>Total 2611 Supervision of Operation and Maintenance of Plant Services – Head of Component</b>				<b>\$217,522.57</b>

LEA : 122092102      Central Bucks SD

Printed 12/1/2020 8:54:49 AM

General Fund (10)				
2620 Operation of Buildings Services				
	<u>Elementary</u>	<u>Secondary</u>	<u>Federal</u>	<u>Total</u>
100 <u>Personnel Services – Salaries</u>				
100 Personnel Services – Salaries				10,091,704.70
Total Personnel Services – Salaries				\$10,091,704.70
200 <u>Personnel Services – Employee Benefits</u>				
220 Social Security Contributions				773,611.23
230 PSERS Retirement Contributions				3,529,926.79
250 Unemployment Compensation				82,749.48
260 Workers' Compensation				69,579.59
270 Group Insurance – Self-Insurance				2,922,664.37
291 Other Retirement Plans				7,830.70
Total Personnel Services – Employee Benefits				\$7,386,362.16
300 <u>Purchased Professional and Technical Services</u>				
330 Other Professional Services				33,900.78
340 Technical Services				133,369.00
Total Purchased Professional and Technical Services				\$167,269.78
400 <u>Purchased Property Services</u>				
410 Cleaning Services				358,461.16
420 Utility Services				320,271.41
430 Repairs and Maintenance Services				1,319,665.00
440 Rentals				68,869.67
460 Extermination Services				22,177.00
490 Other Purchased Property Services				502,214.77
Total Purchased Property Services				\$2,591,659.01
500 <u>Other Purchased Services</u>				
521 Fire Insurance				562,911.00
523 General Property and Liability Insurance				81,465.00
529 Other Insurance				57,370.00
580 Travel				19,695.82
Total Other Purchased Services				\$721,441.82
600 <u>Supplies</u>				
610 General Supplies	903,178.23	895,897.09		1,799,075.32
620 Energy				3,174,087.37
630 Food				1,667.98
650 Supplies & Fees – Technology Related				32,273.68
Total Supplies				\$5,007,104.35
700 <u>Property</u>				
752 Capital Equipment – Original and Additional				73,019.03
762 Capitalized Equipment - Replacement				127,707.03
Total Property				\$200,726.06
800 <u>Other Objects</u>				
810 Dues and Fees				4,275.83

LEA : 122092102     Central Bucks SD

Printed 12/1/2020 8:54:49 AM

General Fund (10)

2620 Operation of Buildings Services	<u>Elementary</u>	<u>Secondary</u>	<u>Federal</u>	<u>Total</u>
Total Other Objects				\$4,275.83
Total 2620 Operation of Buildings Services	\$903,178.23	\$895,897.09		\$26,170,543.71



LEA : 122092102      Central Bucks SD

Printed 12/1/2020 8:54:49 AM

General Fund (10)				
2700 Student Transportation Services	<u>Elementary</u>	<u>Secondary</u>	<u>Federal</u>	<u>Total</u>
100 <u>Personnel Services – Salaries</u>				
100 Personnel Services – Salaries				5,937,556.95
Total Personnel Services – Salaries				\$5,937,556.95
200 <u>Personnel Services – Employee Benefits</u>				
220 Social Security Contributions				432,372.37
230 PSERS Retirement Contributions				2,000,478.19
250 Unemployment Compensation				2,908.68
260 Workers' Compensation				94,642.26
270 Group Insurance – Self-Insurance				1,996,873.51
291 Other Retirement Plans				3,930.46
Total Personnel Services – Employee Benefits				\$4,531,205.47
300 <u>Purchased Professional and Technical Services</u>				
330 Other Professional Services				20,832.29
Total Purchased Professional and Technical Services				\$20,832.29
400 <u>Purchased Property Services</u>				
420 Utility Services				14,643.16
430 Repairs and Maintenance Services				71,394.29
440 Rentals				2,007.92
Total Purchased Property Services				\$88,045.37
500 <u>Other Purchased Services</u>				
511 Student Transportation Services from Another LEA Within the State				112,373.26
513 Contracted Carriers				5,798,996.42
515 Public Carriers				7,525.00
516 Student Transportation Services From the IU				638,977.37
522 Automotive Liability Insurance				221,571.00
530 Communications				50,186.41
580 Travel				667.16
Total Other Purchased Services				\$6,830,296.62
600 <u>Supplies</u>				
610 General Supplies				258,499.53
620 Energy				260,002.52
630 Food				1,066.45
650 Supplies & Fees – Technology Related				168,613.49
Total Supplies				\$688,181.99
800 <u>Other Objects</u>				
810 Dues and Fees				705.21
Total Other Objects				\$705.21
Total 2700 Student Transportation Services				\$18,096,823.90

LEA : 122092102     Central Bucks SD

Printed 12/1/2020 8:54:49 AM

General Fund (10)

2710 Supervision of Student Transportation Services	<u>Elementary</u>	<u>Secondary</u>	<u>Federal</u>	<u>Total</u>
100 <u>Personnel Services – Salaries</u>				
100 Personnel Services – Salaries				108,150.00
Total Personnel Services – Salaries				\$108,150.00
200 <u>Personnel Services – Employee Benefits</u>				
220 Social Security Contributions				7,875.54
230 PSERS Retirement Contributions				37,084.57
250 Unemployment Compensation				14.82
260 Workers' Compensation				482.22
270 Group Insurance – Self-Insurance				15,975.96
291 Other Retirement Plans				2,169.09
Total Personnel Services – Employee Benefits				\$63,602.20
Total 2710 Supervision of Student Transportation Services				\$171,752.20

LEA : 122092102      Central Bucks SD

Printed 12/1/2020 8:54:49 AM

General Fund (10)

2711 Supervision of Student Transportation Services – Head of Component	<u>Elementary</u>	<u>Secondary</u>	<u>Federal</u>	<u>Total</u>
100 <u>Personnel Services – Salaries</u>				
100 Personnel Services – Salaries				108,150.00
Total Personnel Services – Salaries				\$108,150.00
200 <u>Personnel Services – Employee Benefits</u>				
220 Social Security Contributions				7,875.54
230 PSERS Retirement Contributions				37,084.57
250 Unemployment Compensation				14.82
260 Workers' Compensation				482.22
270 Group Insurance – Self-Insurance				15,975.96
291 Other Retirement Plans				2,169.09
Total Personnel Services – Employee Benefits				\$63,602.20
Total 2711 Supervision of Student Transportation Services – Head of Component				\$171,752.20

LEA : 122092102      Central Bucks SD

Printed 12/1/2020 8:54:49 AM

<b>General Fund (10)</b>				
<b>2720 Vehicle Operation Services</b>	<b><u>Elementary</u></b>	<b><u>Secondary</u></b>	<b><u>Federal</u></b>	<b><u>Total</u></b>
<b>100 <u>Personnel Services – Salaries</u></b>				
100 Personnel Services – Salaries				5,300,964.38
<b>Total Personnel Services – Salaries</b>				<b>\$5,300,964.38</b>
<b>200 <u>Personnel Services – Employee Benefits</u></b>				
220 Social Security Contributions				381,259.59
230 PSERS Retirement Contributions				1,763,345.80
250 Unemployment Compensation				2,602.99
260 Workers' Compensation				84,695.81
270 Group Insurance – Self-Insurance				1,781,210.19
291 Other Retirement Plans				1,368.32
<b>Total Personnel Services – Employee Benefits</b>				<b>\$4,014,482.70</b>
<b>300 <u>Purchased Professional and Technical Services</u></b>				
330 Other Professional Services				18,749.06
<b>Total Purchased Professional and Technical Services</b>				<b>\$18,749.06</b>
<b>400 <u>Purchased Property Services</u></b>				
420 Utility Services				13,178.84
430 Repairs and Maintenance Services				64,254.86
440 Rentals				1,807.13
<b>Total Purchased Property Services</b>				<b>\$79,240.83</b>
<b>500 <u>Other Purchased Services</u></b>				
511 Student Transportation Services from Another LEA Within the State				101,135.93
513 Contracted Carriers				5,219,096.78
515 Public Carriers				6,772.50
516 Student Transportation Services From the IU				575,079.63
522 Automotive Liability Insurance				199,413.90
530 Communications				45,167.77
580 Travel				600.44
<b>Total Other Purchased Services</b>				<b>\$6,147,266.95</b>
<b>600 <u>Supplies</u></b>				
610 General Supplies				232,495.94
620 Energy				234,002.27
630 Food				959.80
650 Supplies & Fees – Technology Related				151,752.14
<b>Total Supplies</b>				<b>\$619,210.15</b>
<b>800 <u>Other Objects</u></b>				
810 Dues and Fees				634.69
<b>Total Other Objects</b>				<b>\$634.69</b>
<b>Total 2720 Vehicle Operation Services</b>				<b>\$16,180,548.76</b>

LEA : 122092102      Central Bucks SD

Printed 12/1/2020 8:54:49 AM

General Fund (10)				
2750 Nonpublic Transportation	<u>Elementary</u>	<u>Secondary</u>	<u>Federal</u>	<u>Total</u>
100 <u>Personnel Services – Salaries</u>				
100 Personnel Services – Salaries				528,442.57
Total Personnel Services – Salaries				\$528,442.57
200 <u>Personnel Services – Employee Benefits</u>				
220 Social Security Contributions				43,237.24
230 PSERS Retirement Contributions				200,047.82
250 Unemployment Compensation				290.87
260 Workers' Compensation				9,464.23
270 Group Insurance – Self-Insurance				199,687.36
291 Other Retirement Plans				393.05
Total Personnel Services – Employee Benefits				\$453,120.57
300 <u>Purchased Professional and Technical Services</u>				
330 Other Professional Services				2,083.23
Total Purchased Professional and Technical Services				\$2,083.23
400 <u>Purchased Property Services</u>				
420 Utility Services				1,464.32
430 Repairs and Maintenance Services				7,139.43
440 Rentals				200.79
Total Purchased Property Services				\$8,804.54
500 <u>Other Purchased Services</u>				
511 Student Transportation Services from Another LEA Within the State				11,237.33
513 Contracted Carriers				579,899.64
515 Public Carriers				752.50
516 Student Transportation Services From the IU				63,897.74
522 Automotive Liability Insurance				22,157.10
530 Communications				5,018.64
580 Travel				66.72
Total Other Purchased Services				\$683,029.67
600 <u>Supplies</u>				
610 General Supplies				26,003.59
620 Energy				26,000.25
630 Food				106.65
650 Supplies & Fees – Technology Related				16,861.35
Total Supplies				\$68,971.84
800 <u>Other Objects</u>				
810 Dues and Fees				70.52
Total Other Objects				\$70.52
Total 2750 Nonpublic Transportation				\$1,744,522.94

LEA : 122092102      Central Bucks SD

Printed 12/1/2020 8:54:49 AM

General Fund (10)					
2800 Support Services – Central		Elementary	Secondary	Federal	Total
100 Personnel Services – Salaries					
100 Personnel Services – Salaries				20,907.00	1,391,063.04
Total Personnel Services – Salaries				\$20,907.00	\$1,391,063.04
200 Personnel Services – Employee Benefits					
220 Social Security Contributions				1,556.88	100,024.03
230 PSERS Retirement Contributions				7,164.44	476,991.15
240 Tuition Reimbursement					3,027.75
250 Unemployment Compensation				4.55	278.72
260 Workers' Compensation				144.77	9,065.84
270 Group Insurance – Self-Insurance				4,792.75	244,271.71
291 Other Retirement Plans				253.00	13,350.07
Total Personnel Services – Employee Benefits				\$13,916.39	\$847,009.27
300 Purchased Professional and Technical Services					
330 Other Professional Services					276,290.80
340 Technical Services					234,654.40
350 Security / Safety Services					73,699.40
360 Employee Training and Development Services					15,700.25
Total Purchased Professional and Technical Services					\$600,344.85
400 Purchased Property Services					
430 Repairs and Maintenance Services					1,122,912.40
440 Rentals					(171,474.53)
Total Purchased Property Services					\$951,437.87
500 Other Purchased Services					
530 Communications					566,778.42
549 Other Advertising/Public Relations					7,506.06
580 Travel					3,818.71
Total Other Purchased Services					\$578,103.19
600 Supplies					
610 General Supplies					98,696.18
630 Food					2,911.31
640 Books and Periodicals					2,763.45
650 Supplies & Fees – Technology Related					84,513.28
Total Supplies					\$188,884.22
800 Other Objects					
810 Dues and Fees					957.96
890 Miscellaneous Expenditures					10.00
Total Other Objects					\$967.96
Total 2800 Support Services – Central				\$34,823.39	\$4,557,810.40

LEA : 122092102      Central Bucks SD

Printed 12/1/2020 8:54:49 AM

General Fund (10)				
2810 Planning, Research, Development and Evaluation Services	<u>Elementary</u>	<u>Secondary</u>	<u>Federal</u>	<u>Total</u>
100 <u>Personnel Services – Salaries</u>				
100 Personnel Services – Salaries				621,310.12
Total Personnel Services – Salaries				\$621,310.12
200 <u>Personnel Services – Employee Benefits</u>				
220 Social Security Contributions				45,672.04
230 PSERS Retirement Contributions				213,047.34
250 Unemployment Compensation				125.97
260 Workers' Compensation				4,098.87
270 Group Insurance – Self-Insurance				111,671.28
291 Other Retirement Plans				4,984.52
Total Personnel Services – Employee Benefits				\$379,600.02
300 <u>Purchased Professional and Technical Services</u>				
340 Technical Services				234,654.40
350 Security / Safety Services				73,699.40
Total Purchased Professional and Technical Services				\$308,353.80
400 <u>Purchased Property Services</u>				
430 Repairs and Maintenance Services				1,094,063.01
440 Rentals				(171,474.53)
Total Purchased Property Services				\$922,588.48
500 <u>Other Purchased Services</u>				
530 Communications				566,778.42
580 Travel				1,869.93
Total Other Purchased Services				\$568,648.35
600 <u>Supplies</u>				
610 General Supplies				90,053.49
630 Food				2,655.90
650 Supplies & Fees – Technology Related				79,112.64
Total Supplies				\$171,822.03
800 <u>Other Objects</u>				
810 Dues and Fees				75.00
Total Other Objects				\$75.00
Total 2810 Planning, Research, Development and Evaluation Services				\$2,972,397.80

LEA : 122092102      Central Bucks SD

Printed 12/1/2020 8:54:49 AM

General Fund (10)				
2820 Information Services	<u>Elementary</u>	<u>Secondary</u>	<u>Federal</u>	<u>Total</u>
100 <u>Personnel Services – Salaries</u>				
100 Personnel Services – Salaries				148,297.00
Total Personnel Services – Salaries				\$148,297.00
200 <u>Personnel Services – Employee Benefits</u>				
220 Social Security Contributions				10,630.09
230 PSERS Retirement Contributions				50,851.01
250 Unemployment Compensation				14.82
260 Workers' Compensation				482.22
270 Group Insurance – Self-Insurance				15,975.96
291 Other Retirement Plans				2,974.79
Total Personnel Services – Employee Benefits				\$80,928.89
Total 2820 Information Services				\$229,225.89



LEA : 122092102     Central Bucks SD

Printed 12/1/2020 8:54:49 AM

General Fund (10)

2821 Supervision of Information Services	<u>Elementary</u>	<u>Secondary</u>	<u>Federal</u>	<u>Total</u>
100 <u>Personnel Services – Salaries</u>				
100 Personnel Services – Salaries				148,297.00
Total Personnel Services – Salaries				\$148,297.00
200 <u>Personnel Services – Employee Benefits</u>				
220 Social Security Contributions				10,630.09
230 PSERS Retirement Contributions				50,851.01
250 Unemployment Compensation				14.82
260 Workers' Compensation				482.22
270 Group Insurance – Self-Insurance				15,975.96
291 Other Retirement Plans				2,974.79
Total Personnel Services – Employee Benefits				\$80,928.89
Total 2821 Supervision of Information Services				\$229,225.89

LEA : 122092102      Central Bucks SD

Printed 12/1/2020 8:54:49 AM

General Fund (10)				
2830 Staff Services				
	<u>Elementary</u>	<u>Secondary</u>	<u>Federal</u>	<u>Total</u>
100 <u>Personnel Services – Salaries</u>				
100 Personnel Services – Salaries				600,548.92
Total Personnel Services – Salaries				\$600,548.92
200 <u>Personnel Services – Employee Benefits</u>				
220 Social Security Contributions				42,165.02
230 PSERS Retirement Contributions				205,928.36
240 Tuition Reimbursement				3,027.75
250 Unemployment Compensation				133.38
260 Workers' Compensation				4,339.98
270 Group Insurance – Self-Insurance				111,831.72
291 Other Retirement Plans				5,137.76
Total Personnel Services – Employee Benefits				\$372,563.97
300 <u>Purchased Professional and Technical Services</u>				
330 Other Professional Services				276,290.80
360 Employee Training and Development Services				15,700.25
Total Purchased Professional and Technical Services				\$291,991.05
400 <u>Purchased Property Services</u>				
430 Repairs and Maintenance Services				28,849.39
Total Purchased Property Services				\$28,849.39
500 <u>Other Purchased Services</u>				
549 Other Advertising/Public Relations				7,506.06
580 Travel				1,948.78
Total Other Purchased Services				\$9,454.84
600 <u>Supplies</u>				
610 General Supplies				8,642.69
630 Food				255.41
640 Books and Periodicals				2,763.45
650 Supplies & Fees – Technology Related				5,400.64
Total Supplies				\$17,062.19
800 <u>Other Objects</u>				
810 Dues and Fees				882.96
890 Miscellaneous Expenditures				10.00
Total Other Objects				\$892.96
Total 2830 Staff Services				\$1,321,363.32

LEA : 122092102      Central Bucks SD

Printed 12/1/2020 8:54:49 AM

General Fund (10)				
2831 Supervision of Staff Services	<u>Elementary</u>	<u>Secondary</u>	<u>Federal</u>	<u>Total</u>
100 <u>Personnel Services – Salaries</u>				
100 Personnel Services – Salaries				179,105.00
Total Personnel Services – Salaries				\$179,105.00
200 <u>Personnel Services – Employee Benefits</u>				
220 Social Security Contributions				10,995.07
230 PSERS Retirement Contributions				61,415.03
250 Unemployment Compensation				14.82
260 Workers' Compensation				482.22
270 Group Insurance – Self-Insurance				15,975.96
291 Other Retirement Plans				3,589.42
Total Personnel Services – Employee Benefits				\$92,472.52
Total 2831 Supervision of Staff Services				\$271,577.52

LEA : 122092102      Central Bucks SD

Printed 12/1/2020 8:54:49 AM

General Fund (10)				
2832 Recruitment and Placement Services	<u>Elementary</u>	<u>Secondary</u>	<u>Federal</u>	<u>Total</u>
100 <u>Personnel Services – Salaries</u>				
100 Personnel Services – Salaries				421,443.92
Total Personnel Services – Salaries				\$421,443.92
200 <u>Personnel Services – Employee Benefits</u>				
220 Social Security Contributions				31,169.95
230 PSERS Retirement Contributions				144,513.33
250 Unemployment Compensation				118.56
260 Workers' Compensation				3,857.76
270 Group Insurance – Self-Insurance				95,855.76
291 Other Retirement Plans				1,548.34
Total Personnel Services – Employee Benefits				\$277,063.70
300 <u>Purchased Professional and Technical Services</u>				
330 Other Professional Services				119,290.80
Total Purchased Professional and Technical Services				\$119,290.80
400 <u>Purchased Property Services</u>				
430 Repairs and Maintenance Services				28,849.39
Total Purchased Property Services				\$28,849.39
500 <u>Other Purchased Services</u>				
549 Other Advertising/Public Relations				7,506.06
580 Travel				1,948.78
Total Other Purchased Services				\$9,454.84
600 <u>Supplies</u>				
610 General Supplies				8,642.69
630 Food				255.41
640 Books and Periodicals				2,763.45
650 Supplies & Fees – Technology Related				5,400.64
Total Supplies				\$17,062.19
800 <u>Other Objects</u>				
810 Dues and Fees				882.96
890 Miscellaneous Expenditures				10.00
Total Other Objects				\$892.96
Total 2832 Recruitment and Placement Services				\$874,057.80

LEA : 122092102     Central Bucks SD

Printed 12/1/2020 8:54:49 AM

General Fund (10)

2834 Staff Development Services – Non-Instructional, Certified Staff Only	<u>Elementary</u>	<u>Secondary</u>	<u>Federal</u>	<u>Total</u>
200 <u>Personnel Services – Employee Benefits</u>				
240 Tuition Reimbursement				3,027.75
Total Personnel Services – Employee Benefits				\$3,027.75
300 <u>Purchased Professional and Technical Services</u>				
330 Other Professional Services				157,000.00
360 Employee Training and Development Services				258.25
Total Purchased Professional and Technical Services				\$157,258.25
Total 2834 Staff Development Services – Non-Instructional, Certified Staff Only				\$160,286.00

LEA : 122092102     Central Bucks SD

Printed 12/1/2020 8:54:49 AM

General Fund (10)

2836 Staff Development Services – Non-Instructional, Non-Certified Staff Only	<u>Elementary</u>	<u>Secondary</u>	<u>Federal</u>	<u>Total</u>
300 <u>Purchased Professional and Technical Services</u>				
360 Employee Training and Development Services				15,442.00
Total Purchased Professional and Technical Services				\$15,442.00
Total 2836 Staff Development Services – Non-Instructional, Non-Certified Staff Only				\$15,442.00

LEA : 122092102     Central Bucks SD

Printed 12/1/2020 8:54:49 AM

General Fund (10)

2850 State and Federal Agency Liaison Services	<u>Elementary</u>	<u>Secondary</u>	<u>Federal</u>	<u>Total</u>
100 <u>Personnel Services – Salaries</u>				
100 Personnel Services – Salaries			20,907.00	20,907.00
<b>Total Personnel Services – Salaries</b>			<b>\$20,907.00</b>	<b>\$20,907.00</b>
200 <u>Personnel Services – Employee Benefits</u>				
220 Social Security Contributions			1,556.88	1,556.88
230 PSERS Retirement Contributions			7,164.44	7,164.44
250 Unemployment Compensation			4.55	4.55
260 Workers' Compensation			144.77	144.77
270 Group Insurance – Self-Insurance			4,792.75	4,792.75
291 Other Retirement Plans			253.00	253.00
<b>Total Personnel Services – Employee Benefits</b>			<b>\$13,916.39</b>	<b>\$13,916.39</b>
<b>Total 2850 State and Federal Agency Liaison Services</b>			<b>\$34,823.39</b>	<b>\$34,823.39</b>

LEA : 122092102      Central Bucks SD

Printed 12/1/2020 8:54:49 AM

General Fund (10)

2900 Other Support Services

Elementary                      Secondary                      Federal                      Total

500 Other Purchased Services

595 IU Payments By Withholding 138,767.45

596 Direct Payments To Intermediate Units 85,275.00

<b>Total Other Purchased Services</b>				<b>\$224,042.45</b>
<b>Total 2900 Other Support Services</b>				<b>\$224,042.45</b>



LEA : 122092102     Central Bucks SD

Printed 12/1/2020 8:54:49 AM

General Fund (10)

2910 Support Services Not Listed Elsewhere In the 2000 Series

Elementary                      Secondary                      Federal                      Total

500 Other Purchased Services

595 IU Payments By Withholding 138,767.45

596 Direct Payments To Intermediate Units 85,275.00

Total Other Purchased Services				\$224,042.45
Total 2910 Support Services Not Listed Elsewhere In the 2000 Series				\$224,042.45

LEA : 122092102      Central Bucks SD

Printed 12/1/2020 8:54:59 AM

<b>General Fund (10)</b>	
<b>3000 Operation of Non-Instructional Services</b>	<b><u>Total</u></b>
<b>100 <u>Personnel Services – Salaries</u></b>	
100 Personnel Services – Salaries	5,143,727.07
<b>Total Personnel Services – Salaries</b>	<b>\$5,143,727.07</b>
<b>200 <u>Personnel Services – Employee Benefits</u></b>	
220 Social Security Contributions	387,300.71
230 PSERS Retirement Contributions	1,558,243.21
250 Unemployment Compensation	4,330.32
260 Workers' Compensation	140,975.58
270 Group Insurance – Self-Insurance	213,184.78
291 Other Retirement Plans	6,532.07
<b>Total Personnel Services – Employee Benefits</b>	<b>\$2,310,566.67</b>
<b>300 <u>Purchased Professional and Technical Services</u></b>	
329 Professional Educational Services – Other	49,045.51
330 Other Professional Services	528,913.43
<b>Total Purchased Professional and Technical Services</b>	<b>\$577,958.94</b>
<b>400 <u>Purchased Property Services</u></b>	
430 Repairs and Maintenance Services	11,044.50
<b>Total Purchased Property Services</b>	<b>\$11,044.50</b>
<b>500 <u>Other Purchased Services</u></b>	
549 Other Advertising/Public Relations	320.00
580 Travel	59,171.81
599 Other Miscellaneous Purchased Services	1,066.50
<b>Total Other Purchased Services</b>	<b>\$60,558.31</b>
<b>600 <u>Supplies</u></b>	
610 General Supplies	731,218.11
630 Food	37,428.44
650 Supplies & Fees – Technology Related	170.56
<b>Total Supplies</b>	<b>\$768,817.11</b>
<b>700 <u>Property</u></b>	
752 Capital Equipment – Original and Additional	9,479.60
762 Capitalized Equipment - Replacement	28,711.74
<b>Total Property</b>	<b>\$38,191.34</b>
<b>800 <u>Other Objects</u></b>	
810 Dues and Fees	24,732.54
<b>Total Other Objects</b>	<b>\$24,732.54</b>
<b>Total 3000 Operation of Non-Instructional Services</b>	<b>\$8,935,596.48</b>

LEA : 122092102      Central Bucks SD

Printed 12/1/2020 8:54:59 AM

General Fund (10)				
3200 Student Activities				
	<u>Elementary</u>	<u>Secondary</u>	<u>Federal</u>	<u>Total</u>
100 <u>Personnel Services – Salaries</u>				
100 Personnel Services – Salaries				2,912,515.85
Total Personnel Services – Salaries				\$2,912,515.85
200 <u>Personnel Services – Employee Benefits</u>				
220 Social Security Contributions				219,327.20
230 PSERS Retirement Contributions				970,183.54
250 Unemployment Compensation				2,288.61
260 Workers' Compensation				74,554.32
270 Group Insurance – Self-Insurance				98,239.01
291 Other Retirement Plans				5,101.64
Total Personnel Services – Employee Benefits				\$1,369,694.32
300 <u>Purchased Professional and Technical Services</u>				
330 Other Professional Services				508,462.28
Total Purchased Professional and Technical Services				\$508,462.28
500 <u>Other Purchased Services</u>				
580 Travel				29,372.44
Total Other Purchased Services				\$29,372.44
600 <u>Supplies</u>				
610 General Supplies				490,043.86
650 Supplies & Fees – Technology Related				170.56
Total Supplies				\$490,214.42
700 <u>Property</u>				
752 Capital Equipment – Original and Additional				9,479.60
762 Capitalized Equipment - Replacement				28,711.74
Total Property				\$38,191.34
800 <u>Other Objects</u>				
810 Dues and Fees				24,682.54
Total Other Objects				\$24,682.54
Total 3200 Student Activities				\$5,373,133.19

LEA : 122092102      Central Bucks SD

Printed 12/1/2020 8:54:59 AM

General Fund (10)				
3300 Community Services				
	<u>Elementary</u>	<u>Secondary</u>	<u>Federal</u>	<u>Total</u>
100 <u>Personnel Services – Salaries</u>				
100 Personnel Services – Salaries				2,231,211.22
Total Personnel Services – Salaries				\$2,231,211.22
200 <u>Personnel Services – Employee Benefits</u>				
220 Social Security Contributions				167,973.51
230 PSERS Retirement Contributions				588,059.67
250 Unemployment Compensation				2,041.71
260 Workers' Compensation				66,421.26
270 Group Insurance – Self-Insurance				114,945.77
291 Other Retirement Plans				1,430.43
Total Personnel Services – Employee Benefits				\$940,872.35
300 <u>Purchased Professional and Technical Services</u>				
329 Professional Educational Services – Other				49,045.51
330 Other Professional Services				20,451.15
Total Purchased Professional and Technical Services				\$69,496.66
400 <u>Purchased Property Services</u>				
430 Repairs and Maintenance Services				11,044.50
Total Purchased Property Services				\$11,044.50
500 <u>Other Purchased Services</u>				
549 Other Advertising/Public Relations				320.00
580 Travel				29,799.37
599 Other Miscellaneous Purchased Services			1,066.50	1,066.50
Total Other Purchased Services			\$1,066.50	\$31,185.87
600 <u>Supplies</u>				
610 General Supplies			7,785.60	241,174.25
630 Food			1,090.03	37,428.44
Total Supplies			\$8,875.63	\$278,602.69
800 <u>Other Objects</u>				
810 Dues and Fees			50.00	50.00
Total Other Objects			\$50.00	\$50.00
Total 3300 Community Services			\$9,992.13	\$3,562,463.29

LEA : 122092102     Central Bucks SD

Printed 12/1/2020 8:55:13 AM

General Fund (10)

5000 Other Expenditures and Financing Uses		<u>Total</u>
800 <u>Other Objects</u>		
830 Interest		1,258,364.72
880 Refunds of Prior Years' Receipts		32,876.46
Total Other Objects		\$1,291,241.18
900 <u>Other Uses of Funds</u>		
910 Redemption of Principal		8,025,000.00
939 Other Fund Transfers		15,300,000.00
Total Other Uses of Funds		\$23,325,000.00
Total 5000 Other Expenditures and Financing Uses		\$24,616,241.18

LEA : 122092102     Central Bucks SD

Printed 12/1/2020 8:55:13 AM

General Fund (10)

5100 Debt Service / Other Expenditures and Financing Uses	<u>Elementary</u>	<u>Secondary</u>	<u>Federal</u>	<u>Total</u>
800 <u>Other Objects</u>				
830 Interest				1,258,364.72
880 Refunds of Prior Years' Receipts				32,876.46
Total Other Objects				\$1,291,241.18
900 <u>Other Uses of Funds</u>				
910 Redemption of Principal				8,025,000.00
Total Other Uses of Funds				\$8,025,000.00
Total 5100 Debt Service / Other Expenditures and Financing Uses				\$9,316,241.18

LEA : 122092102     Central Bucks SD

Printed 12/1/2020 8:55:13 AM

<b>General Fund (10)</b>				
<b>5110 Debt Service</b>	<u><b>Elementary</b></u>	<u><b>Secondary</b></u>	<u><b>Federal</b></u>	<u><b>Total</b></u>
<b>800 <u>Other Objects</u></b>				
830 Interest				1,258,364.72
<b>Total Other Objects</b>				<b>\$1,258,364.72</b>
<b>900 <u>Other Uses of Funds</u></b>				
910 Redemption of Principal				8,025,000.00
<b>Total Other Uses of Funds</b>				<b>\$8,025,000.00</b>
<b>Total 5110 Debt Service</b>				<b>\$9,283,364.72</b>

LEA : 122092102     Central Bucks SD

Printed 12/1/2020 8:55:13 AM

General Fund (10)

5130 Refund of Prior Year Revenues / Receipts	<u>Elementary</u>	<u>Secondary</u>	<u>Federal</u>	<u>Total</u>
800 <u>Other Objects</u>				
880 Refunds of Prior Years' Receipts				32,876.46
Total Other Objects				\$32,876.46
Total 5130 Refund of Prior Year Revenues / Receipts				\$32,876.46



LEA : 122092102     Central Bucks SD

Printed 12/1/2020 8:55:13 AM

General Fund (10)

5200 Interfund Transfers – Out	<u>Elementary</u>	<u>Secondary</u>	<u>Federal</u>	<u>Total</u>
900 <u>Other Uses of Funds</u>				
939 Other Fund Transfers				15,300,000.00
Total Other Uses of Funds				\$15,300,000.00
Total 5200 Interfund Transfers – Out				\$15,300,000.00

LEA : 122092102     Central Bucks SD

Printed 12/1/2020 8:55:13 AM

General Fund (10)

5230 Capital Projects Fund Transfers	<u>Elementary</u>	<u>Secondary</u>	<u>Federal</u>	<u>Total</u>
900 <u>Other Uses of Funds</u>				
939 Other Fund Transfers				15,300,000.00
Total Other Uses of Funds				\$15,300,000.00
Total 5230 Capital Projects Fund Transfers				\$15,300,000.00

LEA : 122092102      Central Bucks SD

Printed 12/1/2020 8:54:40 AM

Other Capital Projects Fund (39)

1000 Instruction		<u>Total</u>
100	<u>Personnel Services – Salaries</u>	
100	Personnel Services – Salaries	97,440.00
Total Personnel Services – Salaries		\$97,440.00
Total 1000 Instruction		\$97,440.00

LEA : 122092102     Central Bucks SD

Printed 12/1/2020 8:54:40 AM

Other Capital Projects Fund (39)

1300 Vocational Education

	<u>Elementary</u>	<u>Secondary</u>	<u>Federal</u>	<u>Total</u>
100 <u>Personnel Services – Salaries</u>				
100 Personnel Services – Salaries		97,440.00		97,440.00
<b>Total Personnel Services – Salaries</b>		<b>\$97,440.00</b>		<b>\$97,440.00</b>
<b>Total 1300 Vocational Education</b>		<b>\$97,440.00</b>		<b>\$97,440.00</b>

LEA : 122092102     Central Bucks SD

Printed 12/1/2020 8:54:53 AM

Other Capital Projects Fund (39)

2000 Support Services		<u>Total</u>
400 <u>Purchased Property Services</u>		
430 Repairs and Maintenance Services	205,797.16	
Total Purchased Property Services	\$205,797.16	
600 <u>Supplies</u>		
610 General Supplies	2,792,639.45	
650 Supplies & Fees – Technology Related	107,911.76	
Total Supplies	\$2,900,551.21	
700 <u>Property</u>		
752 Capital Equipment – Original and Additional	231,112.56	
762 Capitalized Equipment - Replacement	1,264,314.00	
766 Capitalized Technology Equipment – Replacement	2,320.00	
Total Property	\$1,497,746.56	
Total 2000 Support Services	\$4,604,094.93	

LEA : 122092102     Central Bucks SD

Printed 12/1/2020 8:54:53 AM

Other Capital Projects Fund (39)

2200 Support Services – Instructional Staff

	<u>Elementary</u>	<u>Secondary</u>	<u>Federal</u>	<u>Total</u>
<b>600 Supplies</b>				
610 General Supplies	1,340,466.94	1,452,172.51		2,792,639.45
650 Supplies & Fees – Technology Related	15,904.35	17,229.71		33,134.06
<b>Total Supplies</b>	<b>\$1,356,371.29</b>	<b>\$1,469,402.22</b>		<b>\$2,825,773.51</b>
<b>700 Property</b>				
752 Capital Equipment – Original and Additional	110,934.03	120,178.53		231,112.56
766 Capitalized Technology Equipment – Replacement	1,113.60	1,206.40		2,320.00
<b>Total Property</b>	<b>\$112,047.63</b>	<b>\$121,384.93</b>		<b>\$233,432.56</b>
<b>Total 2200 Support Services – Instructional Staff</b>	<b>\$1,468,418.92</b>	<b>\$1,590,787.15</b>		<b>\$3,059,206.07</b>

LEA : 122092102      Central Bucks SD

Printed 12/1/2020 8:54:53 AM

Other Capital Projects Fund (39)

2240 Computer-Assisted Instruction Support Services	<u>Elementary</u>	<u>Secondary</u>	<u>Federal</u>	<u>Total</u>
600 <u>Supplies</u>				
610 General Supplies	1,340,466.94	1,452,172.51		2,792,639.45
650 Supplies & Fees – Technology Related	15,904.35	17,229.71		33,134.06
Total Supplies	\$1,356,371.29	\$1,469,402.22		\$2,825,773.51
700 <u>Property</u>				
752 Capital Equipment – Original and Additional	110,934.03	120,178.53		231,112.56
766 Capitalized Technology Equipment – Replacement	1,113.60	1,206.40		2,320.00
Total Property	\$112,047.63	\$121,384.93		\$233,432.56
Total 2240 Computer-Assisted Instruction Support Services	\$1,468,418.92	\$1,590,787.15		\$3,059,206.07

LEA : 122092102     Central Bucks SD

Printed 12/1/2020 8:54:53 AM

Other Capital Projects Fund (39)

2600 Operation and Maintenance of Plant Services

Elementary                      Secondary                      Federal                      Total

700 <u>Property</u>				
762 Capitalized Equipment - Replacement				221,006.00
Total Property				\$221,006.00
Total 2600 Operation and Maintenance of Plant Services				\$221,006.00



LEA : 122092102     Central Bucks SD

Printed 12/1/2020 8:54:53 AM

Other Capital Projects Fund (39)

2620 Operation of Buildings Services

<u>Elementary</u>	<u>Secondary</u>	<u>Federal</u>	<u>Total</u>
-------------------	------------------	----------------	--------------

700 <u>Property</u>			
762 Capitalized Equipment - Replacement			221,006.00

Total Property			\$221,006.00
Total 2620 Operation of Buildings Services			\$221,006.00

LEA : 122092102     Central Bucks SD

Printed 12/1/2020 8:54:53 AM

Other Capital Projects Fund (39)

2700 Student Transportation Services

Elementary                      Secondary                      Federal                      Total

700 <u>Property</u>				
762 Capitalized Equipment - Replacement				1,043,308.00
Total Property				\$1,043,308.00
Total 2700 Student Transportation Services				\$1,043,308.00

LEA : 122092102     Central Bucks SD

Printed 12/1/2020 8:54:53 AM

Other Capital Projects Fund (39)

2710 Supervision of Student Transportation Services

Elementary                      Secondary                      Federal                      Total

700 <u>Property</u>				
762 Capitalized Equipment - Replacement				1,043,308.00
Total Property				\$1,043,308.00
Total 2710 Supervision of Student Transportation Services				\$1,043,308.00

LEA : 122092102     Central Bucks SD

Printed 12/1/2020 8:54:53 AM

Other Capital Projects Fund (39)

2711 Supervision of Student Transportation Services – Head of Component	<u>Elementary</u>	<u>Secondary</u>	<u>Federal</u>	<u>Total</u>
700 <u>Property</u>				
762 Capitalized Equipment - Replacement				1,043,308.00
Total Property				\$1,043,308.00
Total 2711 Supervision of Student Transportation Services – Head of Component				\$1,043,308.00

LEA : 122092102      Central Bucks SD

Printed 12/1/2020 8:54:53 AM

Other Capital Projects Fund (39)

2800 Support Services – Central

<u>Elementary</u>	<u>Secondary</u>	<u>Federal</u>	<u>Total</u>
-------------------	------------------	----------------	--------------

400 Purchased Property Services

430 Repairs and Maintenance Services			205,797.16
--------------------------------------	--	--	------------

<b>Total Purchased Property Services</b>			<b>\$205,797.16</b>
--	--	--	---------------------

600 Supplies

650 Supplies & Fees – Technology Related			74,777.70
--	--	--	-----------

<b>Total Supplies</b>			<b>\$74,777.70</b>
-----------------------	--	--	--------------------

<b>Total 2800 Support Services – Central</b>			<b>\$280,574.86</b>
--	--	--	---------------------

LEA : 122092102     Central Bucks SD

Printed 12/1/2020 8:54:53 AM

Other Capital Projects Fund (39)

2810 Planning, Research, Development and Evaluation Services	<u>Elementary</u>	<u>Secondary</u>	<u>Federal</u>	<u>Total</u>
400 <u>Purchased Property Services</u>				
430 Repairs and Maintenance Services				205,797.16
Total Purchased Property Services				\$205,797.16
600 <u>Supplies</u>				
650 Supplies & Fees – Technology Related				74,777.70
Total Supplies				\$74,777.70
Total 2810 Planning, Research, Development and Evaluation Services				\$280,574.86

LEA : 122092102     Central Bucks SD

Printed 12/1/2020 8:55:06 AM

Other Capital Projects Fund (39)

4000 Facilities Acquisition, Construction and Improvement Services

Total

400 <u>Purchased Property Services</u>	
450 Construction Services	19,067,648.39
<b>Total Purchased Property Services</b>	<b>\$19,067,648.39</b>
<b>Total 4000 Facilities Acquisition, Construction and Improvement Services</b>	<b>\$19,067,648.39</b>

LEA : 122092102     Central Bucks SD

Printed 12/1/2020 8:55:06 AM

Other Capital Projects Fund (39)

4500 Building Acquisition and Construction Services – Original and Additional	<u>Elementary</u>	<u>Secondary</u>	<u>Federal</u>	<u>Total</u>
400 <u>Purchased Property Services</u>				
450 Construction Services				19,066,144.39
Total Purchased Property Services				\$19,066,144.39
Total 4500 Building Acquisition and Construction Services – Original and Additional				\$19,066,144.39



LEA : 122092102     Central Bucks SD

Printed 12/1/2020 8:55:06 AM

Other Capital Projects Fund (39)

4600 Existing Building Improvement Services

Elementary

Secondary

Federal

Total

400 Purchased Property Services

450 Construction Services

1,504.00

Total Purchased Property Services				\$1,504.00
Total 4600 Existing Building Improvement Services				\$1,504.00

LEA : 122092102     Central Bucks SD

Printed 12/1/2020 8:54:55 AM

Debt Service Fund (40)

2000 Support Services

Total

800 Other Objects

890 Miscellaneous Expenditures

66,771.00

Total Other Objects

\$66,771.00

Total 2000 Support Services

\$66,771.00

LEA : 122092102     Central Bucks SD

Printed 12/1/2020 8:54:55 AM

Debt Service Fund (40)

2300 Support Services – Administration

Elementary                      Secondary                      Federal                      Total

800 Other Objects

890 Miscellaneous Expenditures 66,771.00

**Total Other Objects \$66,771.00**

**Total 2300 Support Services – Administration \$66,771.00**

LEA : 122092102     Central Bucks SD

Printed 12/1/2020 8:54:55 AM

Debt Service Fund (40)

2390 Other Administration Services

Elementary                      Secondary                      Federal                      Total

800 Other Objects

890 Miscellaneous Expenditures 66,771.00

**Total Other Objects \$66,771.00**

**Total 2390 Other Administration Services \$66,771.00**

LEA : 122092102     Central Bucks SD

Printed 12/1/2020 8:55:16 AM

Debt Service Fund (40)

5000 Other Expenditures and Financing Uses

Total

900 Other Uses of Funds

910 Redemption of Principal	29,902,481.00
939 Other Fund Transfers	250,181.00

Total Other Uses of Funds	\$30,152,662.00
Total 5000 Other Expenditures and Financing Uses	\$30,152,662.00

LEA : 122092102     Central Bucks SD

Printed 12/1/2020 8:55:16 AM

Debt Service Fund (40)

5100 Debt Service / Other Expenditures and Financing Uses	<u>Elementary</u>	<u>Secondary</u>	<u>Federal</u>	<u>Total</u>
900 <u>Other Uses of Funds</u>				
910 Redemption of Principal				29,902,481.00
Total Other Uses of Funds				\$29,902,481.00
Total 5100 Debt Service / Other Expenditures and Financing Uses				\$29,902,481.00

LEA : 122092102     Central Bucks SD

Printed 12/1/2020 8:55:16 AM

Debt Service Fund (40)

5110 Debt Service

Elementary                      Secondary                      Federal                      Total

900 Other Uses of Funds

910 Redemption of Principal 29,902,481.00

**Total Other Uses of Funds \$29,902,481.00**

**Total 5110 Debt Service \$29,902,481.00**

Page 152



Page 153

LEA : 122092102     Central Bucks SD

Printed 12/1/2020 8:55:33 AM

	<u>General Fund(10)</u>	<u>Student Sponsored Activity Fund(21)</u>	<u>Public Purpose Trust(27)</u>	<u>Other Compt Approved (28)</u>	<u>Athletic / Activity(29)</u>
<b>1000 <u>Instruction</u></b>					
1100 Regular Programs - Elementary / Secondary	147,602,721.43				
1200 Special Programs - Elementary / Secondary	46,866,029.55				
1300 Vocational Education	4,824,859.66				
1400 Other Instructional Programs - Elementary / Secondary	4,898,119.81				
1500 Nonpublic School Programs	30,446.22				
<b>Total Instruction</b>	<b>\$204,222,176.67</b>				
<b>2000 <u>Support Services</u></b>					
2100 Support Services - Students	14,089,928.29				
2200 Support Services - Instructional Staff	12,480,661.30				
2300 Support Services - Administration	15,334,416.17				
2400 Support Services - Pupil Health	4,308,008.29				
2500 Support Services - Business	1,655,863.46				
2600 Operation and Maintenance of Plant Services	26,388,066.28				
2700 Student Transportation Services	18,096,823.90				
2800 Support Services - Central	4,557,810.40				
2900 Other Support Services	224,042.45				
<b>Total Support Services</b>	<b>\$97,135,620.54</b>				
<b>3000 <u>Operation of Non-Instructional Services</u></b>					
3200 Student Activities	5,373,133.19				
3300 Community Services	3,562,463.29				
<b>Total Operation of Non-Instructional Services</b>	<b>\$8,935,596.48</b>				
<b>4000 <u>Facilities Acquisition, Construction and Improvement Services</u></b>					
4500 Building Acquisition and Construction Services - Original and Additional					
4600 Existing Building Improvement Services					
<b>Total Facilities Acquisition, Construction and Improvement Services</b>					
<b>5000 <u>Other Expenditures and Financing Uses</u></b>					
5100 Debt Service / Other Expenditures and Financing Uses	9,316,241.18				
5200 Interfund Transfers - Out	15,300,000.00				
<b>Total Other Expenditures and Financing Uses</b>	<b>\$24,616,241.18</b>				
<b>TOTAL ACTUAL EXPENDITURES &amp; OTHER FINANCING USES</b>	<b>\$334,909,634.87</b>				

LEA : 122092102     Central Bucks SD

Printed 12/1/2020 8:55:33 AM

	<u>Capital Reserve (690.1850)(31)</u>	<u>Capital Reserve (1431)(32)</u>	<u>Other Capital Projects Fund(39)</u>	<u>Debt Service(40)</u>	<u>Permanent(90)</u>
<b>1000 Instruction</b>					
1100 Regular Programs - Elementary / Secondary					
1200 Special Programs - Elementary / Secondary					
1300 Vocational Education			97,440.00		
1400 Other Instructional Programs - Elementary / Secondary					
1500 Nonpublic School Programs					
<b>Total Instruction</b>			<b>\$97,440.00</b>		
<b>2000 Support Services</b>					
2100 Support Services - Students					
2200 Support Services - Instructional Staff			3,059,206.07		
2300 Support Services - Administration				66,771.00	
2400 Support Services - Pupil Health					
2500 Support Services - Business					
2600 Operation and Maintenance of Plant Services			221,006.00		
2700 Student Transportation Services			1,043,308.00		
2800 Support Services - Central			280,574.86		
2900 Other Support Services					
<b>Total Support Services</b>			<b>\$4,604,094.93</b>	<b>\$66,771.00</b>	
<b>3000 Operation of Non-Instructional Services</b>					
3200 Student Activities					
3300 Community Services					
<b>Total Operation of Non-Instructional Services</b>					
<b>4000 Facilities Acquisition, Construction and Improvement Services</b>					
4500 Building Acquisition and Construction Services - Original and Additional			19,066,144.39		
4600 Existing Building Improvement Services			1,504.00		
<b>Total Facilities Acquisition, Construction and Improvement Services</b>			<b>\$19,067,648.39</b>		
<b>5000 Other Expenditures and Financing Uses</b>					
5100 Debt Service / Other Expenditures and Financing Uses				29,902,481.00	
5200 Interfund Transfers - Out				250,181.00	
<b>Total Other Expenditures and Financing Uses</b>				<b>\$30,152,662.00</b>	
<b>TOTAL ACTUAL EXPENDITURES &amp; OTHER FINANCING USES</b>			<b>\$23,769,183.32</b>	<b>\$30,219,433.00</b>	

LEA : 122092102     Central Bucks SD

Printed 12/1/2020 8:55:33 AM

	<u>Total</u>
<b>1000 <u>Instruction</u></b>	
1100 Regular Programs - Elementary / Secondary	147,602,721.43
1200 Special Programs - Elementary / Secondary	46,866,029.55
1300 Vocational Education	4,922,299.66
1400 Other Instructional Programs - Elementary / Secondary	4,898,119.81
1500 Nonpublic School Programs	30,446.22
<b>Total Instruction</b>	<b>\$204,319,616.67</b>
<b>2000 <u>Support Services</u></b>	
2100 Support Services - Students	14,089,928.29
2200 Support Services - Instructional Staff	15,539,867.37
2300 Support Services - Administration	15,401,187.17
2400 Support Services - Pupil Health	4,308,008.29
2500 Support Services - Business	1,655,863.46
2600 Operation and Maintenance of Plant Services	26,609,072.28
2700 Student Transportation Services	19,140,131.90
2800 Support Services - Central	4,838,385.26
2900 Other Support Services	224,042.45
<b>Total Support Services</b>	<b>\$101,806,486.47</b>
<b>3000 <u>Operation of Non-Instructional Services</u></b>	
3200 Student Activities	5,373,133.19
3300 Community Services	3,562,463.29
<b>Total Operation of Non-Instructional Services</b>	<b>\$8,935,596.48</b>
<b>4000 <u>Facilities Acquisition, Construction and Improvement Services</u></b>	
4500 Building Acquisition and Construction Services - Original and Additional	19,066,144.39
4600 Existing Building Improvement Services	1,504.00
<b>Total Facilities Acquisition, Construction and Improvement Services</b>	<b>\$19,067,648.39</b>
<b>5000 <u>Other Expenditures and Financing Uses</u></b>	
5100 Debt Service / Other Expenditures and Financing Uses	39,218,722.18
5200 Interfund Transfers - Out	15,550,181.00
<b>Total Other Expenditures and Financing Uses</b>	<b>\$54,768,903.18</b>
<b>TOTAL ACTUAL EXPENDITURES &amp; OTHER FINANCING USES</b>	<b>\$388,898,251.19</b>

LEA : 122092102     Central Bucks SD

Printed 12/1/2020 8:55:43 AM

PSERS Salary Data (Salary Data should relate to the General Fund only)

Amount	Description	Amount
	Total Salary Base for salaries subject to PSERS withholding	164,386,942.76
	Total Federally Funded salaries subject to PSERS withholding	2,614,443.02

Title I Expenditure Data

Amount	Description	Amount
	Expenditures Funded with Current Title I Funds	689,982.86
	Expenditures Funded with Carry over Title I Funds	
Total Title I Expenditure Data		\$689,982.86

Benefits for Staff Relative to Collective Bargaining Agreements

	OBJECT	COVERED	NOT COVERED	TOTAL
10 General Fund				
	211 Medical Insurance			
	212 Dental Insurance			
	215 Eye Care Insurance			
	216 Prescription Insurance			
	271 Self-Insurance Medical Benefits	21,228,053.60	1,117,265.98	22,345,319.58
	272 Self-Insurance Dental Benefits	1,063,738.67	55,986.25	1,119,724.92
	275 Self-Insurance Eye Care Benefits			
	276 Self-Insurance Prescription Benefits	6,524,067.51	343,371.97	6,867,439.48
	FUND TOTAL	\$28,815,859.78	\$1,516,624.20	\$30,332,483.98
50 Enterprise Fund	No Self Insurance data to report			
	211 Medical Insurance			
	212 Dental Insurance			
	215 Eye Care Insurance			
	216 Prescription Insurance			
	271 Self-Insurance Medical Benefits			
	272 Self-Insurance Dental Benefits			
	275 Self-Insurance Eye Care Benefits			
	276 Self-Insurance Prescription Benefits			
	FUND TOTAL			
60 Internal Service Fund	No Self Insurance data to report			
	211 Medical Insurance			
	212 Dental Insurance			
	215 Eye Care Insurance			
	216 Prescription Insurance			
	271 Self-Insurance Medical Benefits			
	272 Self-Insurance Dental Benefits			
	275 Self-Insurance Eye Care Benefits			
	276 Self-Insurance Prescription Benefits			
	FUND TOTAL			
Total of All Funds		\$28,815,859.78	\$1,516,624.20	\$30,332,483.98

LEA : 122092102      Central Bucks SD

Printed 12/1/2020 8:55:49 AM

Function	Special Education (Prior Year)	Nonspecial Education (Prior Year)	Total (Prior Year)	Special Education (Current Year)	Nonspecial Education (Current Year)	Total (Current Year)
2120 Guidance Services	2,788,257.32	5,065,988.66	7,854,245.98	2,880,763.53	5,234,063.32	8,114,826.85
2140 Psychological Services	1,952,103.82	216,900.42	2,169,004.24	1,951,091.29	216,787.92	2,167,879.21
2150 Speech Pathology and Audiology Services	2,187,718.55	243,079.84	2,430,798.39	2,212,609.99	245,845.55	2,458,455.54
2160 Social Work Services						
2260 Instruction and Curriculum Development Services	126,770.89	2,408,646.87	2,535,417.76	115,533.15	2,195,129.77	2,310,662.92
2350 Legal and Accounting Services	103,814.31	70,227.68	174,041.99	123,246.03	83,542.61	206,788.64
2420 Medical Services						
2440 Nursing Services	1,465,904.14	2,663,403.31	4,129,307.45	1,499,361.22	2,724,191.51	4,223,552.73
2700 Student Transportation Services	1,924,110.64	18,329,685.52	20,253,796.16	1,719,344.23	16,377,479.67	18,096,823.90
Total	\$10,548,679.67	\$28,997,932.30	\$39,546,611.97	\$10,501,949.44	\$27,077,040.35	\$37,578,989.79

LEA : 122092102     Central Bucks SD

Printed 12/1/2020 8:55:55 AM

(PRINCIPAL AMOUNTS ONLY)								
<u>GOVERNMENTAL FUNDS/ ACTIVITIES</u>	Short-Term Borrowing	General Obligation Bonds/Notes	Authority Building Obligations	Other Long-Term Debt	Other Post- Employment Benefits (OPEB)	Compensated Absences	Net Pension Liability	Total
1. Debt at Beginning of Fiscal Year		54,500,000.00			75,591,257.00	2,178,940.00	553,929,000.00	686,199,197.00
2. Additional Debt Incurred During Year					4,843,719.00			4,843,719.00
3. Retirements and Repayments		36,180,000.00				143,711.00	8,023,000.00	44,346,711.00
4. Debt at End of Fiscal Year		18,320,000.00			80,434,976.00	2,035,229.00	545,906,000.00	646,696,205.00
5. Accreted Interest at End Of Fiscal Year								
6. Total Debt and Accreted Interest		18,320,000.00			80,434,976.00	2,035,229.00	545,906,000.00	646,696,205.00
7. Current Portion P&I - Due within 1 year		6,822,750.00						6,822,750.00
8. Interest Paid during current fiscal year		1,258,364.72						1,258,364.72

(PRINCIPAL AMOUNTS ONLY)							
<u>PROPRIETARY FUNDS</u>							
1. Debt at Beginning of Fiscal Year							
2. Additional Debt Incurred During Year							
3. Retirements and Repayments							
4. Debt at End of Fiscal Year							
5. Accreted Interest at End Of Fiscal Year							
6. Total Debt and Accreted Interest							
7. Current Portion P&I - Due within 1 year							
8. Interest Paid during current fiscal year							



LEA : 122092102     Central Bucks SD

Printed 12/1/2020 8:55:55 AM

Total Principal and Interest Payments Made by Your School - All Funds

Function	Fund		Principal (910)	Principal (920)	Interest (830)	Total (Principal +Interest)	Misc Other Uses (990)
5110	10	General Fund	8,025,000.00		1,258,364.72	9,283,364.72	
5110	20	Special Revenue Funds					
5110	30	Capital Projects Funds					
5110	40	Debt Service Fund	29,902,481.00			29,902,481.00	
5110	90	Permanent Fund					
5120	10	General Fund					
5120	20	Special Revenue Funds					
5120	30	Capital Projects Funds					
5120	40	Debt Service Fund					
Total Debt Payments - Governmental Funds			\$37,927,481.00		\$1,258,364.72	\$39,185,845.72	
Function	Fund		Principal (910)	Principal (920)	Interest (830)	Total (Principal +Interest)	
5110	50	Enterprise Fund					
5110	60	Internal Service Fund					
5120	50	Enterprise Fund					
5120	60	Internal Service Fund					
Total Debt Payments - Proprietary Funds							

LEA : 122092102     Central Bucks SD

Printed 12/1/2020 8:55:55 AM

**Debt Details**  
**Governmental Funds/ Activities**

Debt Category	Debt Issue Date (MM/YYYY)	Principal Amounts Only				Current Portion Due Within One Year (Principal and Interest)	Interest Paid During Fiscal Year
		Debt at Beginning of Fiscal Year	Additions	Reductions / Repayments	Debt at End of Fiscal Year		
General Obligation Bonds/Notes – CIB	04/2011	800,000.00		800,000.00			
General Obligation Bonds/Notes – CIB	04/2011	43,480,000.00		28,880,000.00	14,600,000.00	3,251,750.00	747,804.10
General Obligation Bonds/Notes – CIB	02/2007	10,220,000.00		6,500,000.00	3,720,000.00	3,571,000.00	510,560.62
Compensated Absences		2,178,940.00		143,711.00	2,035,229.00		
Other Post-Employment Benefits (OPEB)		75,591,257.00	4,843,719.00		80,434,976.00		
Net Pension Liability		553,929,000.00		8,023,000.00	545,906,000.00		
<b>Totals for Debt Entered:</b>		<b>\$686,199,197.00</b>	<b>\$4,843,719.00</b>	<b>\$44,346,711.00</b>	<b>\$646,696,205.00</b>	<b>\$6,822,750.00</b>	<b>\$1,258,364.72</b>

LEA : 122092102      Central Bucks SD

Printed 12/1/2020 8:55:58 AM

General Fund (10)

Section 1: Tuition/Purchased Services as Reported within Expenditure Detail	Amount
Tuition Reported in General Fund Expenditures 1000-560	10,435,170.23
Purchased Services in General Fund Expenditures 1000-594 and 1000-597	9,250.08
<b>Section 1 Total</b>	<b>\$10,444,420.31</b>

Section 2: Tuition Paid to Institution Types During Fiscal Year	Tuition Paid For Nonspecial Education	Tuition Paid For Special Education	Total
1    1306 Institutions	1,859.15	462,927.64	464,786.79
2    Institutionalized Children's Programs		3,343.38	3,343.38
3    Juveniles Incarcerated in Adult Facilities	68,802.00	137,498.00	206,300.00
4    Residential Treatment Facilities	51,418.85	137,498.00	188,916.85
5    Other Local Education Agencies	3,296.62	41,252.33	44,548.95
6    Brick and Mortar Charter Schools			
7    Cyber Charter Schools	1,040,338.97	714,714.21	1,755,053.18
8    Career and Technology Centers	2,653,672.81	2,171,186.85	4,824,859.66
9    Approved Private Schools		305,244.05	305,244.05
10   PA Chartered Schools for the Deaf and Blind			
11   Private Residential Rehabilitative Institutions			
12   Juvenile Detention Centers			
13   Special Program Jointures			
14   Other Tuition Not Included Elsewhere In This Section	220,063.50	2,431,303.95	2,651,367.45
<b>Section 2 Total</b>	<b>\$4,039,451.90</b>	<b>\$6,404,968.41</b>	<b>\$10,444,420.31</b>

1 .	<u>Student Transportation Services for Educational Field Trips</u>	161,824.53
2 .	<u>Student Transportation Services for Student Activities</u>	33,000.00
3 .	<u>Rental of Vehicles for Student Transportation Services</u>	
4 .	<u>Capital Reserve Funds</u>	266,972.00

Include only district-owned transportation expenditures paid from State or local money.  
DO NOT include federal expenditures or payments to contract service providers.  
Contracted transportation services should not be recorded on this schedule.

LEA : 122092102      Central Bucks SD

Printed 12/1/2020 8:56:08 AM

Food Service / Cafeteria Operations Fund (51)

3000 Operation of Non-Instructional Services	<u>Total</u>
300 <u>Purchased Professional and Technical Services</u>	
329 Professional Educational Services – Other	25,670.39
340 Technical Services	1,700.00
Total Purchased Professional and Technical Services	\$27,370.39
400 <u>Purchased Property Services</u>	
430 Repairs and Maintenance Services	271,894.90
Total Purchased Property Services	\$271,894.90
500 <u>Other Purchased Services</u>	
570 Food Service Management	3,401,829.00
Total Other Purchased Services	\$3,401,829.00
600 <u>Supplies</u>	
610 General Supplies	20,434.86
Total Supplies	\$20,434.86
700 <u>Property</u>	
740 Depreciation	56,744.00
Total Property	\$56,744.00
800 <u>Other Objects</u>	
810 Dues and Fees	15,260.01
Total Other Objects	\$15,260.01
Total 3000 Operation of Non-Instructional Services	\$3,793,533.16

LEA : 122092102      Central Bucks SD

Printed 12/1/2020 8:56:08 AM

Food Service / Cafeteria Operations Fund (51)

3100 Food Services	<u>Elementary</u>	<u>Secondary</u>	<u>Federal</u>	<u>Total</u>
300 <u>Purchased Professional and Technical Services</u>				
329 Professional Educational Services – Other				25,670.39
340 Technical Services				1,700.00
<b>Total Purchased Professional and Technical Services</b>				<b>\$27,370.39</b>
400 <u>Purchased Property Services</u>				
430 Repairs and Maintenance Services				271,894.90
<b>Total Purchased Property Services</b>				<b>\$271,894.90</b>
500 <u>Other Purchased Services</u>				
570 Food Service Management				3,401,829.00
<b>Total Other Purchased Services</b>				<b>\$3,401,829.00</b>
600 <u>Supplies</u>				
610 General Supplies				20,434.86
<b>Total Supplies</b>				<b>\$20,434.86</b>
700 <u>Property</u>				
740 Depreciation				56,744.00
<b>Total Property</b>				<b>\$56,744.00</b>
800 <u>Other Objects</u>				
810 Dues and Fees				15,260.01
<b>Total Other Objects</b>				<b>\$15,260.01</b>
<b>Total 3100 Food Services</b>				<b>\$3,793,533.16</b>

	<u>Food Service(51)</u>	<u>Child Care Operations(52)</u>	<u>Other Enterprise(58)</u>	<u>Internal Service(60)</u>	<u>Total</u>
<b>3000 <u>Operation of Non-Instructional Services</u></b>					
3100 Food Services	3,793,533.16				3,793,533.16
<b>Total Operation of Non-Instructional Services</b>	<b>\$3,793,533.16</b>				<b>\$3,793,533.16</b>
<b>TOTAL ACTUAL EXPENDITURES &amp; OTHER FINANCING USES</b>	<b>\$3,793,533.16</b>				<b>\$3,793,533.16</b>

LEA : 122092102     Central Bucks SD

Printed 12/1/2020 8:56:25 AM

Fund	School	School Number	Local Personnel	Local Nonpersonnel	State Personnel	State Nonpersonnel	Federal Personnel	Federal Nonpersonnel	Total	Explanation
10										
	Barclay El Sch	4683	6,751,411.00	714,656.00	1,904,049.00	201,549.00	706,054.00	67,393.00	10,345,112.00	
	Bridge Valley El Sch	7796	7,789,453.00	841,177.00	2,196,800.00	237,231.00	20,036.00	57,740.00	11,142,437.00	
	Buckingham El Sch	1044	5,272,761.00	498,258.00	1,487,036.00	140,520.00	12,624.00	36,380.00	7,447,579.00	
	Butler El Sch	1081	9,004,110.00	927,231.00	2,539,360.00	261,500.00	24,292.00	70,006.00	12,826,499.00	
	Central Bucks HS-East	5133	18,114,974.00	1,831,028.00	5,108,827.00	516,391.00	44,000.00	120,843.00	25,736,063.00	
	Central Bucks HS-South	7790	19,516,685.00	2,192,267.00	5,504,141.00	618,268.00	48,835.00	134,123.00	28,014,319.00	
	Central Bucks HS-West	1043	16,682,424.00	1,843,872.00	4,704,816.00	520,013.00	42,761.00	117,440.00	23,911,326.00	
	Cold Spring El Sch	7435	5,995,044.00	564,112.00	1,690,736.00	159,092.00	14,187.00	40,885.00	8,464,056.00	
	Doyle El Sch	4852	5,501,788.00	523,900.00	1,551,627.00	147,752.00	91,487.00	39,050.00	7,855,604.00	
	Gayman El Sch	1048	4,824,608.00	456,686.00	1,360,647.00	128,796.00	11,726.00	33,793.00	6,816,256.00	
	Groveland El Sch	7653	9,517,047.00	996,017.00	2,684,020.00	280,899.00	413,144.00	118,650.00	14,009,777.00	
	Holicong MS	5307	11,511,304.00	1,154,705.00	3,246,445.00	325,653.00	29,585.00	81,254.00	16,348,946.00	
	Jamison El Sch	7520	6,463,106.00	623,196.00	1,822,740.00	175,755.00	16,098.00	46,392.00	9,147,287.00	
	Kutz El Sch	1047	5,934,174.00	568,197.00	1,673,570.00	160,244.00	14,737.00	42,471.00	8,393,393.00	
	Lenape MS	1041	10,456,114.00	1,066,568.00	2,948,857.00	300,796.00	26,896.00	73,867.00	14,873,098.00	
	Linden El Sch	1057	4,919,145.00	481,900.00	1,387,309.00	135,907.00	59,088.00	34,879.00	7,018,228.00	
	Mill Creek El Sch	7654	8,186,171.00	833,985.00	2,308,683.00	235,202.00	20,499.00	59,075.00	11,643,615.00	
	Pine Run El Sch	5306	5,481,897.00	542,084.00	1,546,017.00	152,880.00	13,753.00	39,634.00	7,776,265.00	
	Tamanend MS	1042	9,834,472.00	1,019,504.00	2,773,541.00	287,523.00	25,596.00	70,298.00	14,010,934.00	
	Titus El Sch	1131	6,681,821.00	696,737.00	1,884,423.00	196,495.00	48,461.00	56,104.00	9,564,041.00	
	Tohickon MS	7715	10,515,033.00	1,222,386.00	2,965,474.00	344,740.00	27,288.00	74,946.00	15,149,867.00	
	Unami MS	4678	10,034,576.00	1,048,154.00	2,829,974.00	295,603.00	26,231.00	72,041.00	14,306,579.00	
	Warwick El Sch	1132	6,073,896.00	589,597.00	1,712,974.00	166,280.00	90,461.00	46,534.00	8,679,742.00	
Total			205,062,014.00	21,236,217.00	57,832,066.00	5,989,089.00	1,827,839.00	1,533,798.00	293,481,023.00	



	<u>Nonspecial Education</u>	<u>Special Education</u>
<b>1000 <u>Instruction</u></b>		
1100 Regular Programs - Elementary / Secondary	66,156.00	132,210.00
<b>Total Instruction</b>	<b>\$66,156.00</b>	<b>\$132,210.00</b>
<b>5000 <u>Other Expenditures and Financing Uses</u></b>		
5100 Debt Service / Other Expenditures and Financing Uses	2,646.00	5,288.00
<b>Total Other Expenditures and Financing Uses</b>	<b>\$2,646.00</b>	<b>\$5,288.00</b>
<b>TOTAL ACTUAL EXPENDITURES &amp; OTHER FINANCING USES</b>	<b>\$68,802.00</b>	<b>\$137,498.00</b>

LEA : 122092102      Central Bucks SD

Printed 12/1/2020 8:56:47 AM

1000 Instruction

<b>100</b>	<b><u>Personnel Services - Salaries</u></b>		
100	Personnel Services - Salaries	38,667.00	77,275.00
<b>Total Personnel Services - Salaries</b>		<b>\$38,667.00</b>	<b>\$77,275.00</b>
<b>200</b>	<b><u>Personnel Services - Employee Benefits</u></b>		
220	Social Security Contributions	2,789.00	5,574.00
230	PSERS Retirement Contributions	13,156.00	26,293.00
260	Workers' Compensation	580.00	1,160.00
270	Group Insurance - Self-Insurance	10,369.00	20,721.00
299	All Other Employee Benefits	63.00	124.00
<b>Total Personnel Services - Employee Benefits</b>		<b>\$26,957.00</b>	<b>\$53,872.00</b>
<b>300</b>	<b><u>Purchased Professional and Technical Services</u></b>		
340	Technical Services	409.00	817.00
<b>Total Purchased Professional and Technical Services</b>		<b>\$409.00</b>	<b>\$817.00</b>
<b>400</b>	<b><u>Purchased Property Services</u></b>		
430	Repairs and Maintenance Services	72.00	144.00
440	Rentals	4.00	7.00
<b>Total Purchased Property Services</b>		<b>\$76.00</b>	<b>\$151.00</b>
<b>500</b>	<b><u>Other Purchased Services</u></b>		
530	Communications	9.00	18.00
580	Travel	29.00	58.00
<b>Total Other Purchased Services</b>		<b>\$38.00</b>	<b>\$76.00</b>
<b>600</b>	<b><u>Supplies</u></b>		
610	General Supplies	9.00	19.00
<b>Total Supplies</b>		<b>\$9.00</b>	<b>\$19.00</b>
<b>Total 1000 Instruction</b>		<b>\$66,156.00</b>	<b>\$132,210.00</b>

LEA : 122092102     Central Bucks SD

Printed 12/1/2020 8:56:47 AM

1100 Regular Programs - Elementary / Secondary	<u>Nonspecial Education</u>	<u>Special Education</u>
<b>100 <u>Personnel Services - Salaries</u></b>		
100 Personnel Services - Salaries	38,667.00	77,275.00
<b>Total Personnel Services - Salaries</b>	<b>\$38,667.00</b>	<b>\$77,275.00</b>
<b>200 <u>Personnel Services - Employee Benefits</u></b>		
220 Social Security Contributions	2,789.00	5,574.00
230 PSERS Retirement Contributions	13,156.00	26,293.00
260 Workers' Compensation	580.00	1,160.00
270 Group Insurance - Self-Insurance	10,369.00	20,721.00
299 All Other Employee Benefits	63.00	124.00
<b>Total Personnel Services - Employee Benefits</b>	<b>\$26,957.00</b>	<b>\$53,872.00</b>
<b>300 <u>Purchased Professional and Technical Services</u></b>		
340 Technical Services	409.00	817.00
<b>Total Purchased Professional and Technical Services</b>	<b>\$409.00</b>	<b>\$817.00</b>
<b>400 <u>Purchased Property Services</u></b>		
430 Repairs and Maintenance Services	72.00	144.00
440 Rentals	4.00	7.00
<b>Total Purchased Property Services</b>	<b>\$76.00</b>	<b>\$151.00</b>
<b>500 <u>Other Purchased Services</u></b>		
530 Communications	9.00	18.00
580 Travel	29.00	58.00
<b>Total Other Purchased Services</b>	<b>\$38.00</b>	<b>\$76.00</b>
<b>600 <u>Supplies</u></b>		
610 General Supplies	9.00	19.00
<b>Total Supplies</b>	<b>\$9.00</b>	<b>\$19.00</b>
<b>Total 1100 Regular Programs - Elementary / Secondary</b>	<b>\$66,156.00</b>	<b>\$132,210.00</b>

LEA : 122092102     Central Bucks SD

Printed 12/1/2020 8:56:47 AM

1110 Regular Programs	<u>Nonspecial Education</u>	<u>Special Education</u>
<b>100 <u>Personnel Services - Salaries</u></b>		
100 Personnel Services - Salaries	38,667.00	77,275.00
<b>Total Personnel Services - Salaries</b>	<b>\$38,667.00</b>	<b>\$77,275.00</b>
<b>200 <u>Personnel Services - Employee Benefits</u></b>		
220 Social Security Contributions	2,789.00	5,574.00
230 PSERS Retirement Contributions	13,156.00	26,293.00
260 Workers' Compensation	580.00	1,160.00
270 Group Insurance - Self-Insurance	10,369.00	20,721.00
299 All Other Employee Benefits	63.00	124.00
<b>Total Personnel Services - Employee Benefits</b>	<b>\$26,957.00</b>	<b>\$53,872.00</b>
<b>300 <u>Purchased Professional and Technical Services</u></b>		
340 Technical Services	409.00	817.00
<b>Total Purchased Professional and Technical Services</b>	<b>\$409.00</b>	<b>\$817.00</b>
<b>400 <u>Purchased Property Services</u></b>		
430 Repairs and Maintenance Services	72.00	144.00
440 Rentals	4.00	7.00
<b>Total Purchased Property Services</b>	<b>\$76.00</b>	<b>\$151.00</b>
<b>500 <u>Other Purchased Services</u></b>		
530 Communications	9.00	18.00
580 Travel	29.00	58.00
<b>Total Other Purchased Services</b>	<b>\$38.00</b>	<b>\$76.00</b>
<b>600 <u>Supplies</u></b>		
610 General Supplies	9.00	19.00
<b>Total Supplies</b>	<b>\$9.00</b>	<b>\$19.00</b>
<b>Total 1110 Regular Programs</b>	<b>\$66,156.00</b>	<b>\$132,210.00</b>

LEA : 122092102     Central Bucks SD

Printed 12/1/2020 8:56:47 AM

5000 Other Expenditures and Financing Uses

900 <u>Other Uses of Funds</u>		
990 Miscellaneous Other Uses of Funds	2,646.00	5,288.00
<b>Total Other Uses of Funds</b>	<b>\$2,646.00</b>	<b>\$5,288.00</b>
<b>Total 5000 Other Expenditures and Financing Uses</b>	<b>\$2,646.00</b>	<b>\$5,288.00</b>

LEA : 122092102     Central Bucks SD

Printed 12/1/2020 8:56:47 AM

5100 Debt Service / Other Expenditures and Financing Uses	<u>Nonspecial Education</u>	<u>Special Education</u>
900 <u>Other Uses of Funds</u>		
990 Miscellaneous Other Uses of Funds	2,646.00	5,288.00
<b>Total Other Uses of Funds</b>	<b>\$2,646.00</b>	<b>\$5,288.00</b>
<b>Total 5100 Debt Service / Other Expenditures and Financing Uses</b>	<b>\$2,646.00</b>	<b>\$5,288.00</b>

LEA : 122092102     Central Bucks SD

Printed 12/1/2020 8:56:47 AM

5110 Debt Service	<u>Nonspecial Education</u>	<u>Special Education</u>
900 <u>Other Uses of Funds</u>		
990 Miscellaneous Other Uses of Funds	2,646.00	5,288.00
<b>Total Other Uses of Funds</b>	<b>\$2,646.00</b>	<b>\$5,288.00</b>
<b>Total 5110 Debt Service</b>	<b>\$2,646.00</b>	<b>\$5,288.00</b>

LEA : 122092102     Central Bucks SD

Printed 12/1/2020 8:56:51 AM

	<u>Nonspecial Education</u>	<u>Special Education</u>
6000 Revenue from Local Sources		
Total Revenue from Local Sources	\$7,973	\$15,933
7000 Revenue from State Sources		
Total Revenue from State Sources	\$7,973	\$15,933
Total	\$15,946	\$31,866
TOTAL REVENUES	\$15,946	\$31,866



LEA : 122092102     Central Bucks SD

Printed 12/1/2020 8:56:54 AM

	<u>Nonspecial Education</u>	<u>Special Education</u>
<b>6000 Revenue from Local Sources</b>		
6810 Revenue from Local Governmental Units	1,395	2,787
6821 State Revenue Received from Other Pennsylvania Public LEAs	6,578	13,146
<b>Total Revenue from Local Sources</b>	<b>\$7,973</b>	<b>\$15,933</b>
<b>7000 Revenue from State Sources</b>		
7810 State Share of Social Security and Medicare Taxes	1,395	2,787
7820 State Share of Retirement Contributions	6,578	13,146
<b>Total Revenue from State Sources</b>	<b>\$7,973</b>	<b>\$15,933</b>
<b>TOTAL</b>	<b>\$15,946</b>	<b>\$31,866</b>
<b>TOTAL REVENUES</b>	<b>\$15,946</b>	<b>\$31,866</b>